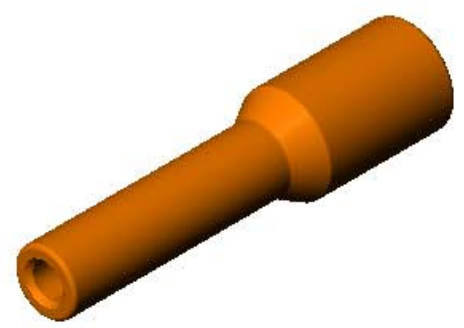
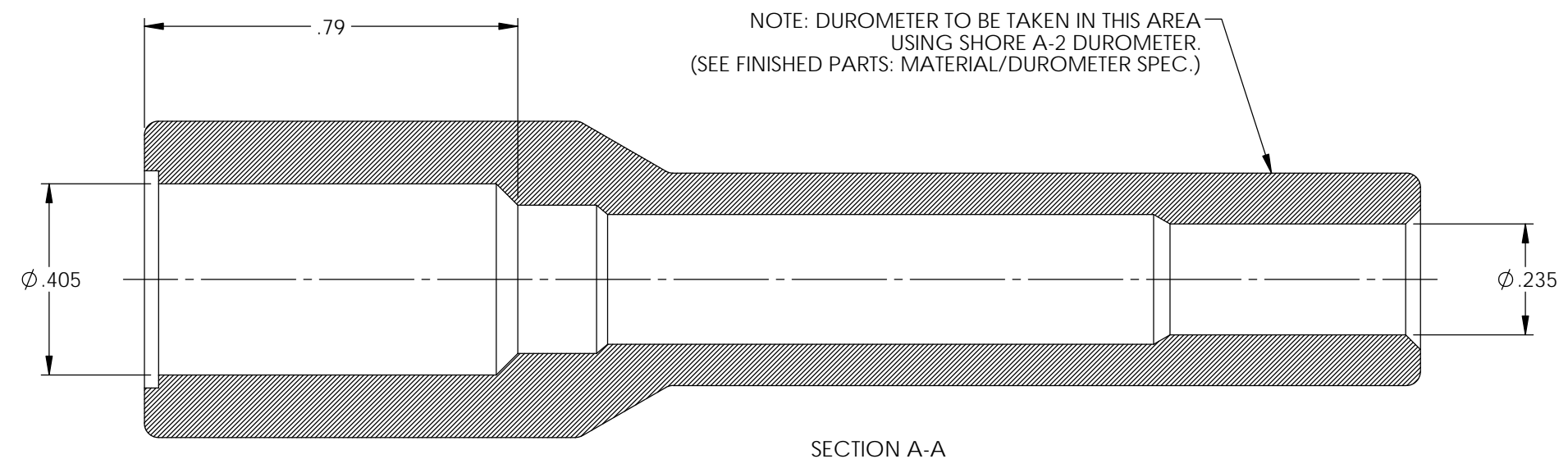
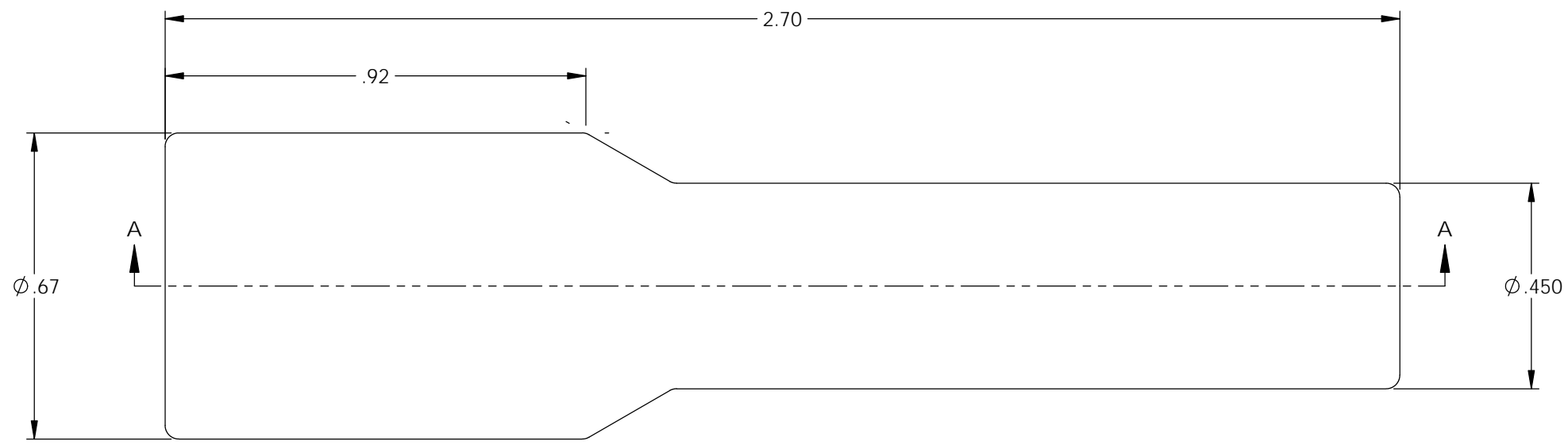


P/C	DESCRIPTION	COLOR	MATERIAL	TEMPERATURE
16004	SB5-OS	ORANGE	SILICONE	400°
16020	SB5-BS	BLACK	SILICONE	400°

Rev.	Description of Change/ SCN#	Date
1	Redrawn in SW from ACAD Org.Eng.Dwg.Date: 12/13/98	7/02/19

NOTE:  
FOR MAXIMUM PERFORMANCE AND RELIABILITY,  
ALWAYS USE ETCO ENGINEERED IGNITION TERMINALS  
WITH ETCO AUTOMOTIVE INSULATORS.



## UNCONTROLLED COPY

<p>THIRD ANGLE PROJECTION TOLERANCES UNLESS OTHERWISE SPECIFIED</p> <p>INCHES: .XX - ±.030 .XXX - ±.015</p> <p>ANGLES: ±2°</p>	<p>MOLD NO.</p> <p style="font-size: 24pt;"><b>2080</b></p>	<p>Title: <b>Straight Spark Plug Boot, 7mm</b></p>	
	<p>DO NOT SCALE DWG.</p>	<p>Drawn By: S.Johnson</p> <p>Date: 7/02/19</p>	<p>Design Control By: ETCO</p> <p>Scale: 3X</p> <p>Size: B</p>