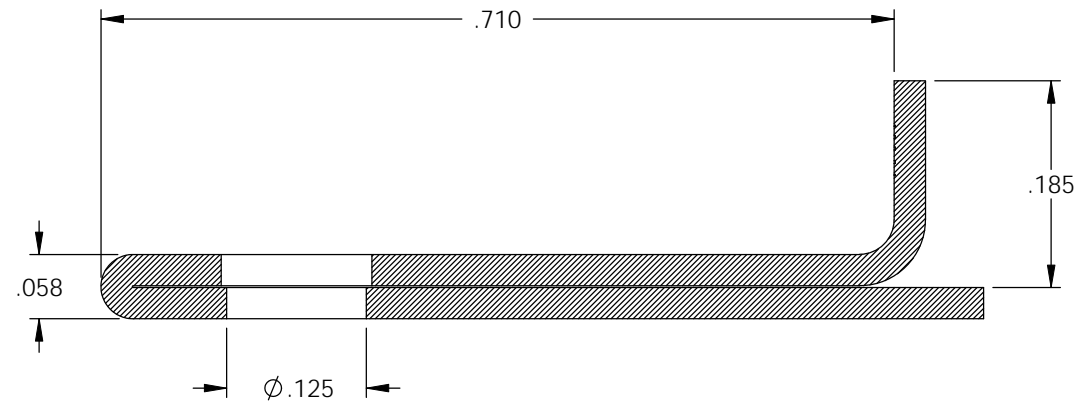


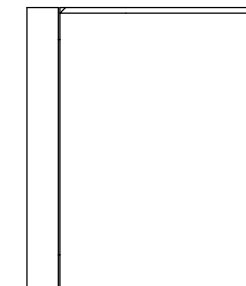
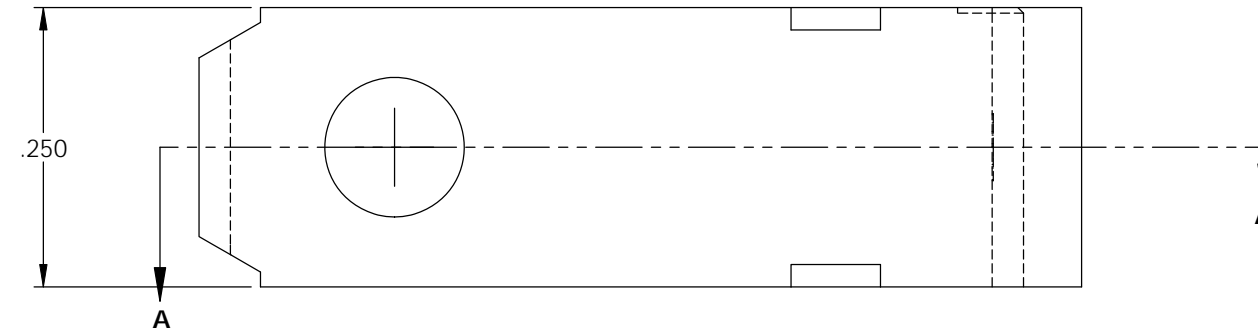
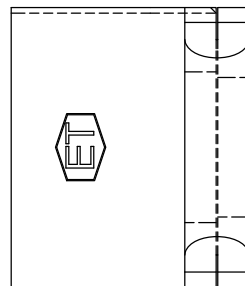
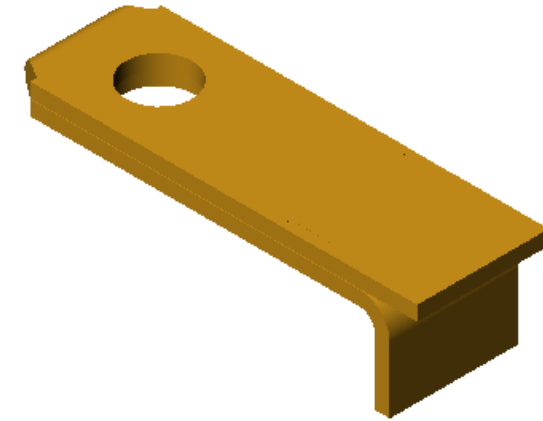
NOTES:
 1. MATERIAL: .028 THICK C26000 BRASS; 1/2 HARD
 ANNEALED TO TEMPER; PER ETCO METAL CODE 00714.

P/C	DESCRIPTION	MAT'L
14242	SB511792-HB	NOTE 1

Rev.	Description of Change/ SCN#	Date
1	TRANSFER FROM CP TO EP	10-29-04
2	SCN# 140161 SCJ	4-23-07



SECTION A-A
 SCALE 6 : 1



UNCONTROLLED COPY

<p>THIRD ANGLE PROJECTION TOLERANCES UNLESS OTHERWISE SPECIFIED INCHES: .XX - ±.030 .XXX - ±.015 ANGLES: ±5°</p>	TOOL NO. 0886	Title: BLADE CONTACT		
	<p>ETCO</p>	DO NOT SCALE DWG.	Drawn By: S.JOHNSON	Date: 10-29-04
ETCO Incorporated Engineered Products 25 Bellows Street Warwick, RI 02888 Phone: (401) 467-2400 Fax: (401) 467-9230 www.ETCO.com		Chk'd/App'd By:	Scale: 6X	Size B
		Dwg. No.: SB511792 cust		