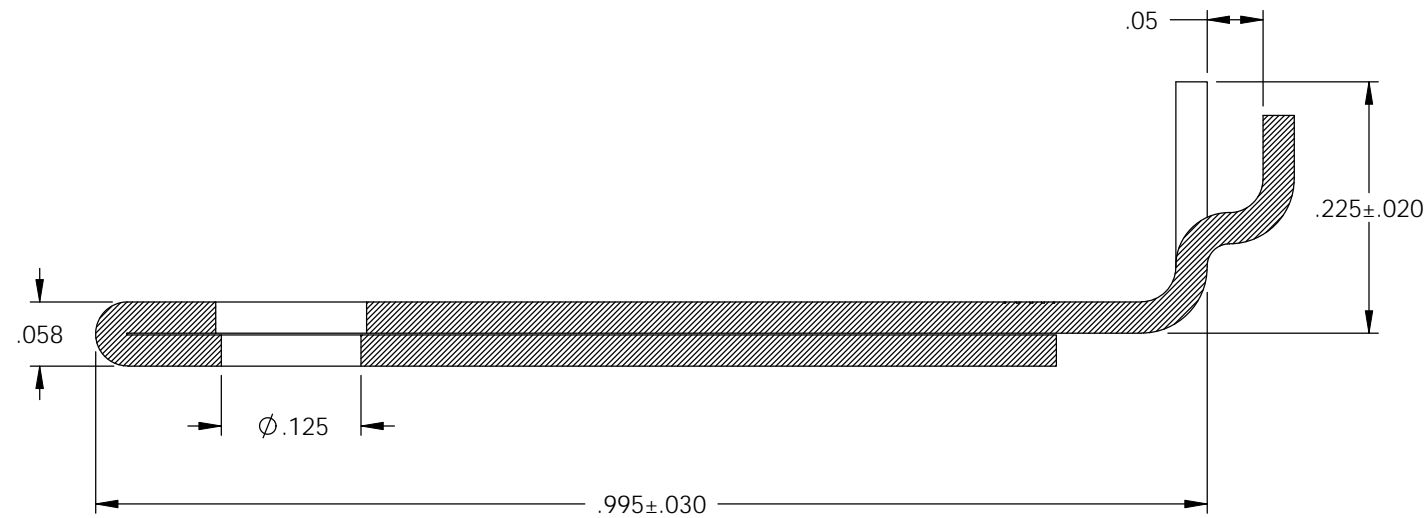


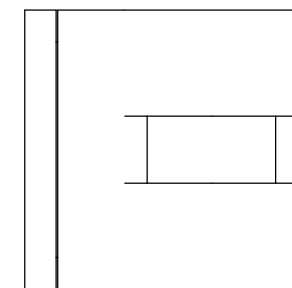
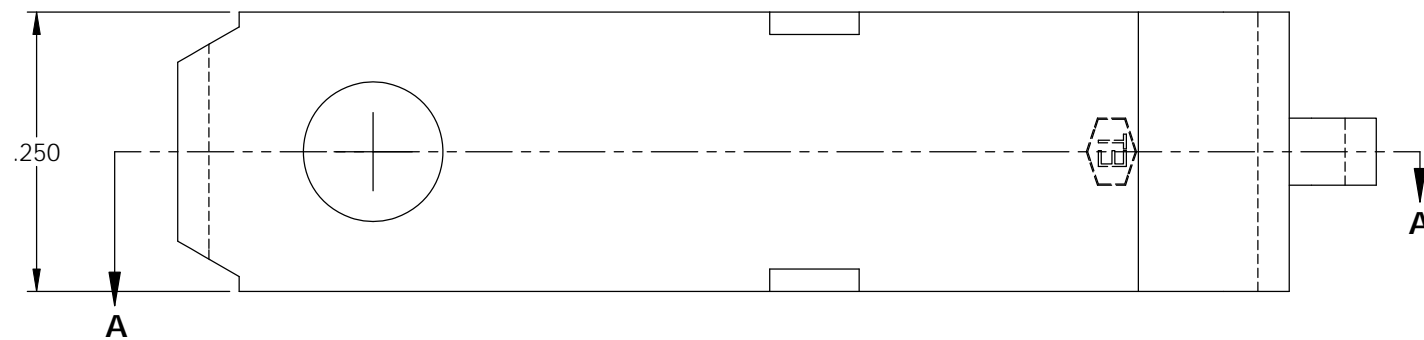
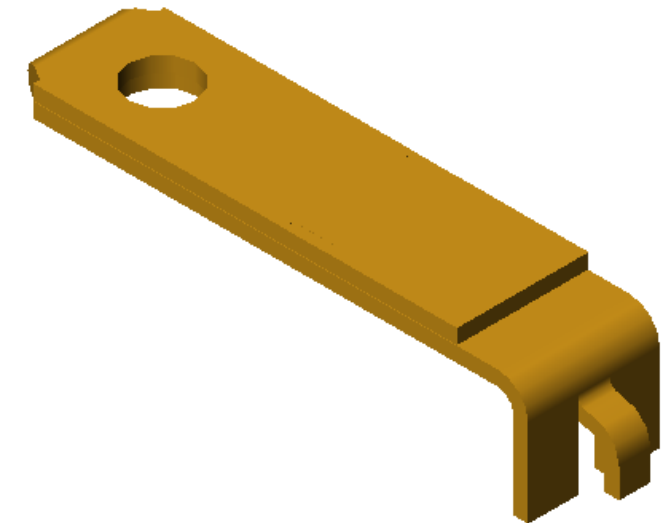
NOTES:
 1. MATERIAL: .028 THICK C26000 BRASS; 1/2 HARD
 ANNEALED TO TEMPER; PER ETCO METAL CODE 00146.

PART CODE	DESCRIPTION	MATERIAL
14235	SB511793-HB	NOTE 1

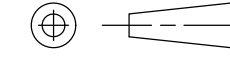

Rev.	Description of Change/ SCN#	Date
1	TRANSFER FROM CP TO EP	10-4-04



SECTION A-A
 SCALE 6 : 1



UNCONTROLLED COPY

 THIRD ANGLE PROJECTION TOLERANCES UNLESS OTHERWISE SPECIFIED INCHES: .XX - $\pm .030$.XXX - $\pm .015$ ANGLES - $\pm 5^\circ$	TOOL NO. 0886	Title: BLADE CONTACT		
		DO NOT SCALE DWG. ETCO Incorporated Engineered Products 25 Bellows Street Warwick, R.I. 02888 Phone: (401)467-2400 FAX: (401)467-9230 www.ETCO.com	Drawn By: S. JOHNSON Chk'd/App'd By:	Date: 10-4-04 Scale: 6X Size: B
		SB511793		