

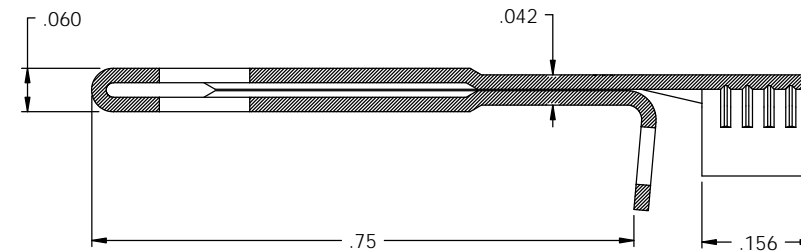
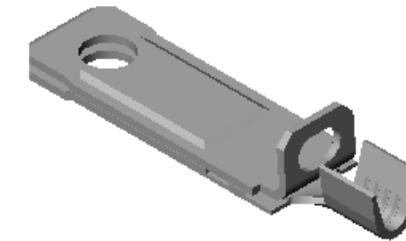
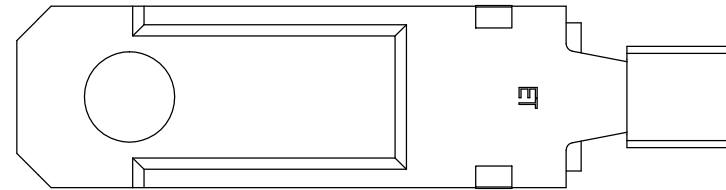


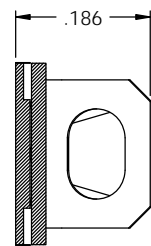
- NOTES:
 1. MATERIAL: .020 THICK C26000 BRASS; 1/2 HARD
 ANNEALED TO TEMPER; PER ETCO METAL CODE 00137.
 2. FOR WINDING AND REWINDING INSTRUCTIONS SEE WI-09-10-8.
 3. WIRE RANGE: #14-#18 AWG.

P/C	DESCRIPTION	MAT'L	REWIND		
09866	SH817F-A-HB	NOTE 1	NO	X	X
09867	SH817F-DRB-HB(4)	NOTE 1	YES	X	X
14133	SH817F-ARC-HB	NOTE 1	YES	X	X
09873	SH817F-D-HB	NOTE 1	NO	X	X

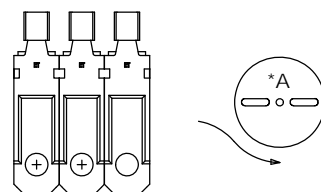
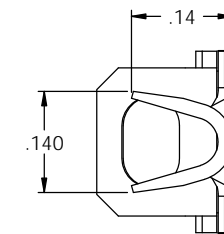
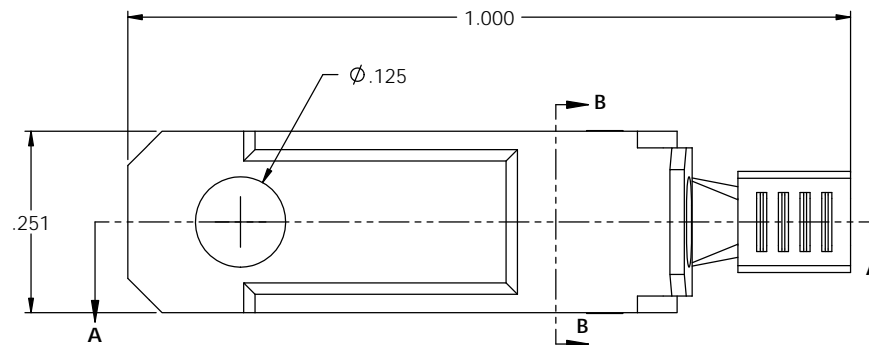
Rev.	Description of Change/SCN#	Date
-	TRANSFER FROM CP TO EP	1-9-04
1	SCN# 102458 SCJ	2-23-04
2	SCN# 102735 SCJ	10-26-04
3	SCN# 102918 SCJ	4-6-05
4	ECR #800 SCJ	10-13-11



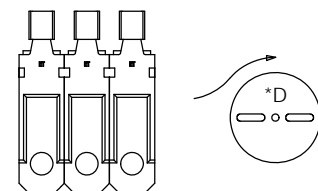
SECTION A-A
SCALE 6 : 1



SECTION B-B
SCALE 6 : 1





DIRECTION EXITING TOOL
EARS DOWN, TO THE BACK
SEE NOTE 2



DIRECTION EXITING TOOL
EARS DOWN, TO THE BACK
SEE NOTE 2

UNCONTROLLED COPY

	TOOL NO.	Title: PADDED BLADE		
	0898	DO NOT SCALE DWG.	Drawn By: S.JOHNSON	Date: 1-9-04
TOLERANCES UNLESS OTHERWISE SPECIFIED		ETCO Incorporated Engineered Products 25 Bellows Street Warwick, RI 02888 Phone: (401) 467-2400 Fax: (401) 467-9230 www.ETCO.com	Chk'd/App'd By:	Scale: 6X
INCHES: XX - ±.030 XXX - ±.015 ANGLES: ±5°			Dwg. No.: SH817F cust	Size: C