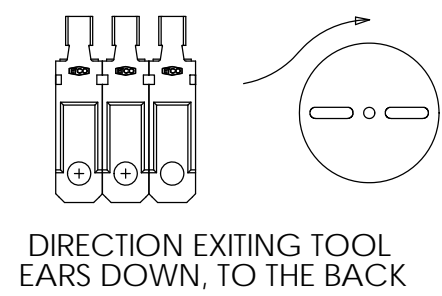
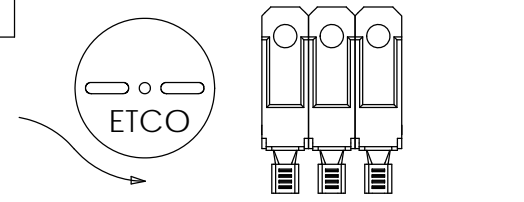
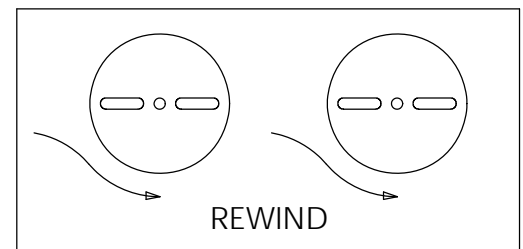
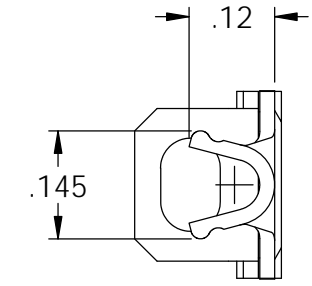
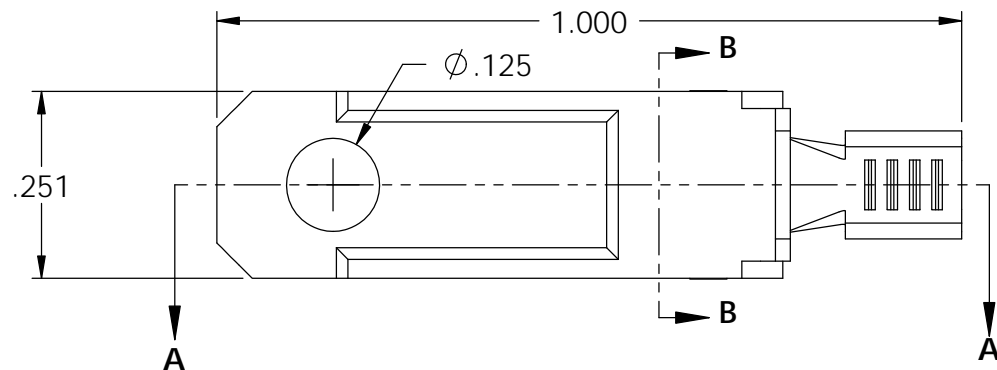
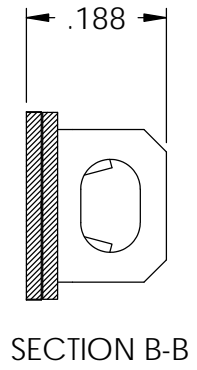
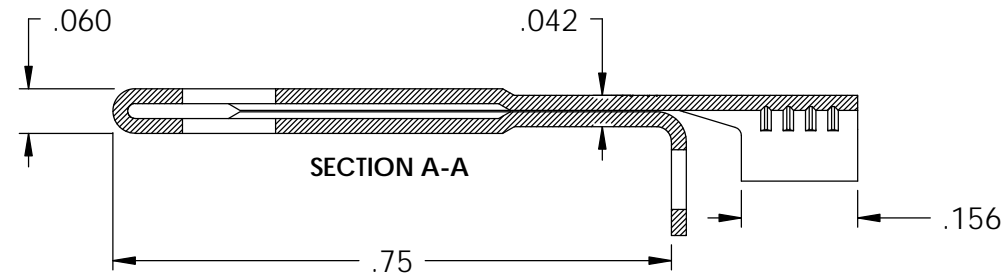
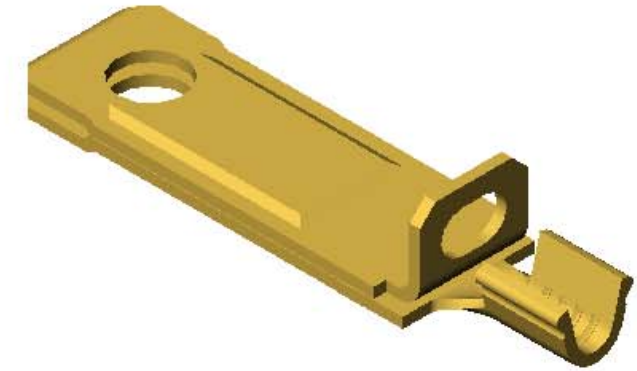
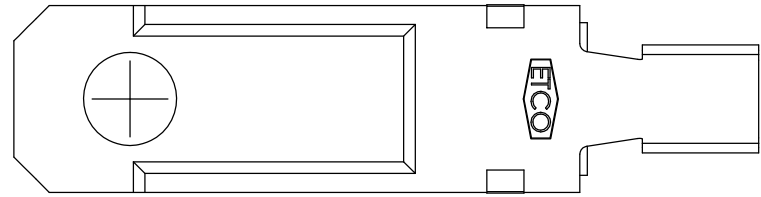


- NOTES:
 1. MATERIAL: .020 THICK C26000 BRASS; 1/2 HARD
 ANNEALED TO TEMPER; PER ETCO METAL CODE 00137.
 2. WIRE RANGE: #18 AWG.

P/C	Description (2)	Mat'l
14138	SH817F18-DRC-HB	NOTE 1

Rev.	Description of Change/ SCN#	Date
1	Initial Release JPD	8-17-07
2	ECR# 816 SCJ	10-26-11



UNCONTROLLED COPY

<p>THIRD ANGLE PROJECTION TOLERANCES UNLESS OTHERWISE SPECIFIED INCHES: .XX - ±.030 .XXX - ±.015 ANGLES: ±5°</p>	TOOL NO. 0898	Title: PADDED BLADE	
		DO NOT SCALE DWG. ETCO Incorporated Engineered Products 25 Bellows Street Warwick, RI 02888 Phone: (401) 467-2400 Fax: (401) 467-9230 www.ETCO.com	Drawn By: J. DeSio Date: 8-17-07
		Chk'd/App'd By:	Scale: 4X Size: B
		Dwg. No.: SH817F18 cust	