

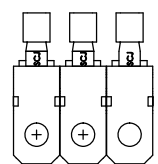
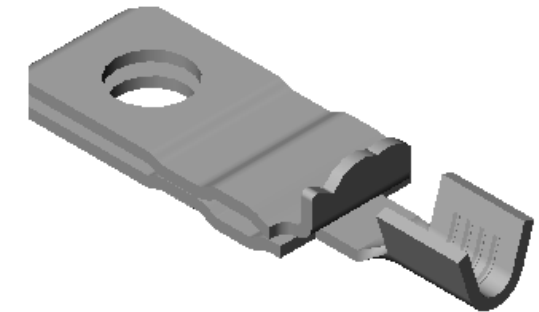
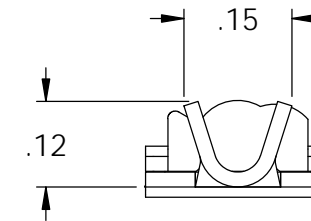
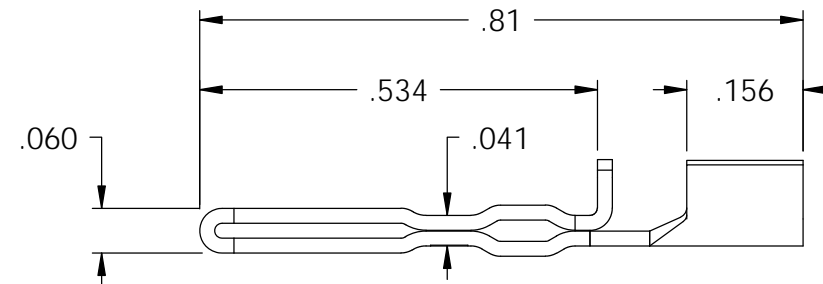
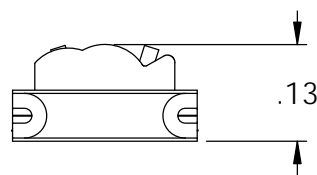
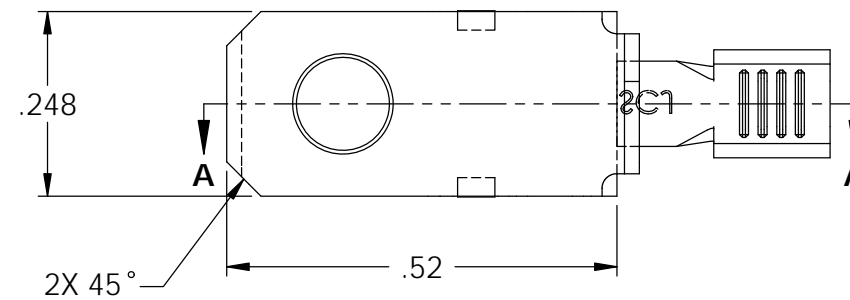
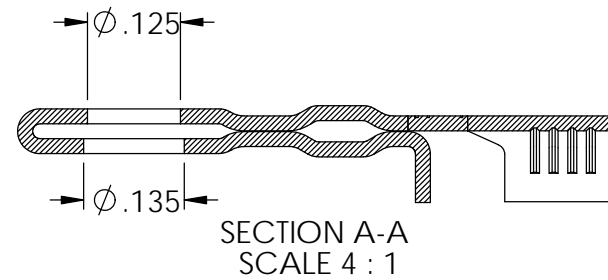
NOTES:

- MATERIAL: .020 THICK C26000 BRASS; 1/2 HARD  
ANNEALED TO TEMPER; PER ETCO METAL CODE 00537.
- MATERIAL: .020 THICK C26000 PRETINNED BRASS; 1/2 HARD  
ANNEALED TO TEMPER; PER ETCO METAL CODE 01570.
- WIRE RANGE: #18 - #20 AWG

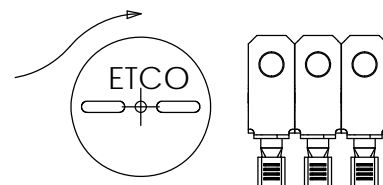
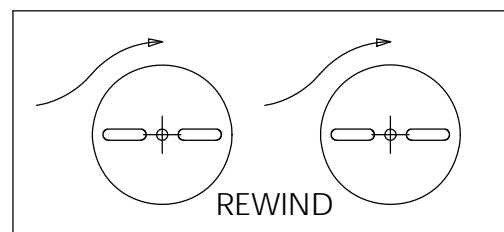
②

Part Code	Description	Material
14315	SH817S2*ARB-HB	NOTE 1
14406	SH817S2*ARB-THB	NOTE 2

Rev.	Description of Change/ SCN#	Date
1	Initial Release JPD	8-17-07
2	SCN#140394 JMR	6-17-08



DIRECTION EXITING TOOL  
EARS DOWN, TO THE BACK



DIRECTION TOWARDS APPLICATOR  
EARS UP, TO THE FRONT

# UNCONTROLLED COPY

 THIRD ANGLE PROJECTION TOLERANCES UNLESS OTHERWISE SPECIFIED INCHES: .XX - ±.030 .XXX - ±.015 ANGLES: ±5°	TOOL NO. <b>0863</b>	Title: <b>NON-POLARIZED BLADE</b>	
		DO NOT SCALE DWG.	Drawn By: J. DeSio Date: 8-17-07
ETCO Incorporated Engineered Products 25 Bellows Street Warwick, RI 02888 Phone: (401) 467-2400 Fax: (401) 467-9230 www.ETCO.com		Chk'd/App'd By:	Scale: 4X Size: B
Dwg. No.:			<b>SH817S2 cust.</b>