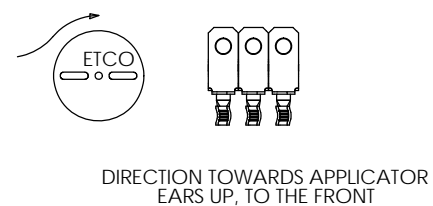
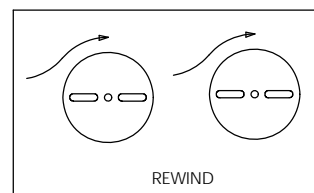
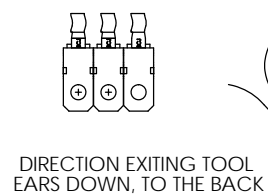
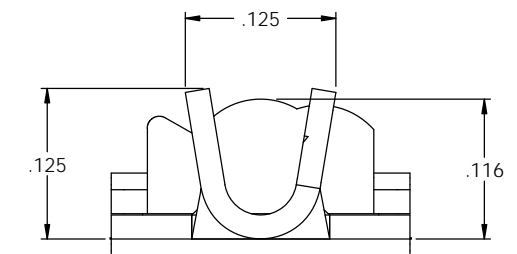
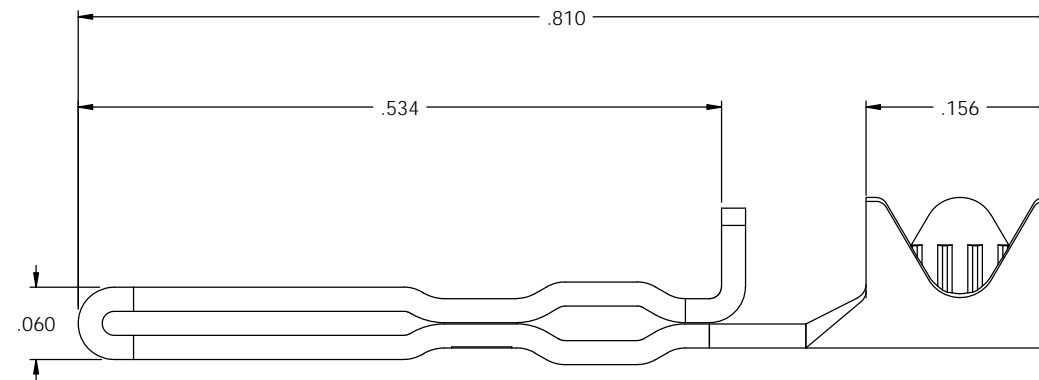
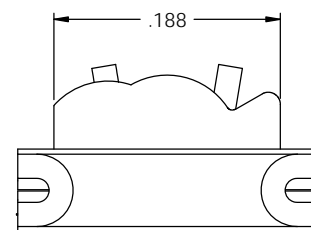
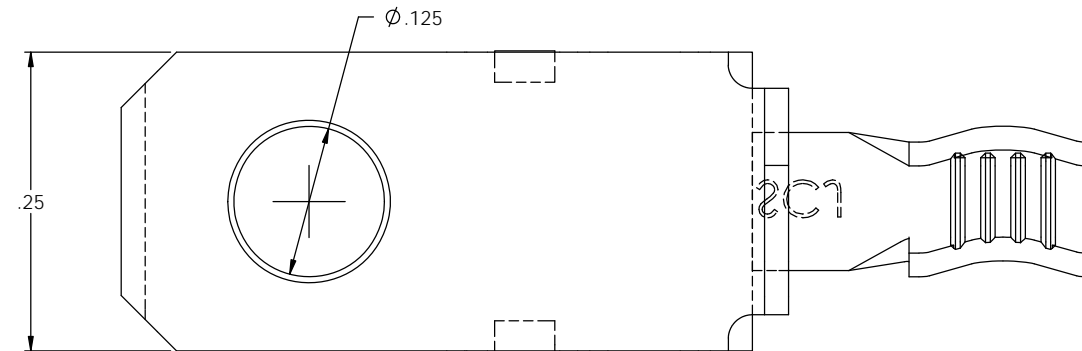
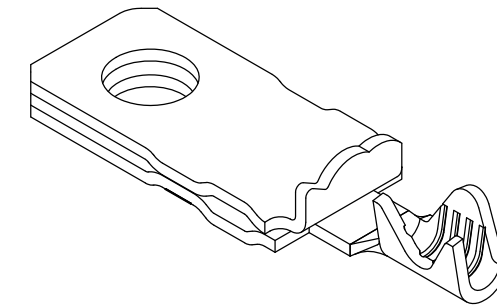


- NOTES:  
 1. MATERIAL: .020 THICK C26000 BRASS; 1/2 HARD  
 ANNEALED TO TEMPER; PER ETCO METAL CODE 00537.  
 2. WIRE RANGE: #20 AWG SOLID.

P/C	DESCRIPTION	MAT'L
14316	SH817S3*ARB-HB	NOTE 1

Rev.	Description of Change/ SCN#	Date
1	TRANSFERED FROM CP SCJ	9-2-08



**UNCONTROLLED COPY**

 THIRD ANGLE PROJECTION	TOOL NO.	Title: NON-POLARIZED BLADE		
	0863	DO NOT SCALE DWG.	Drawn By: S.JOHNSON	Date: 9-2-08
TOLERANCES UNLESS OTHERWISE SPECIFIED INCHES: XX - ±.030 XXX - ±.015 ANGLES: ±5°	 ETCO Incorporated Engineered Products 25 Bellows Street Warwick, RI 02888 Phone: (401) 467-2400 Fax: (401) 467-9230 www.ETCO.com	Chk'd/App'd By:	Scale: 10X	Size: C
		Dwg. No.:	SH817S3 cust	