

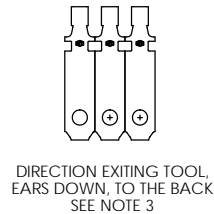
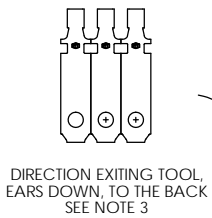
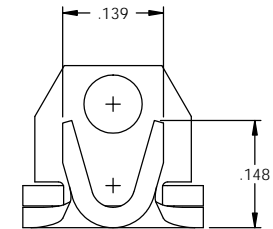
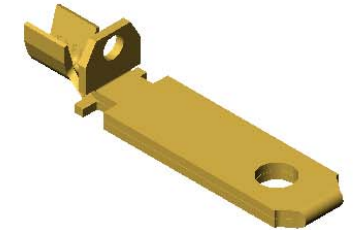
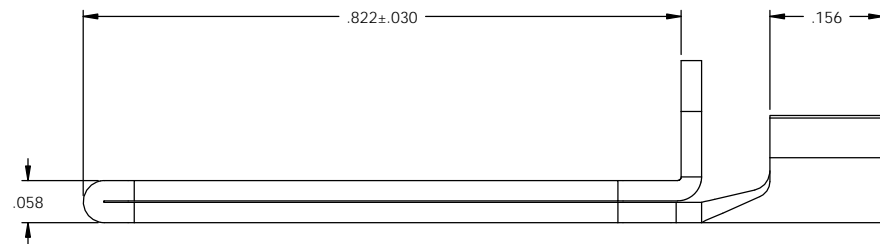
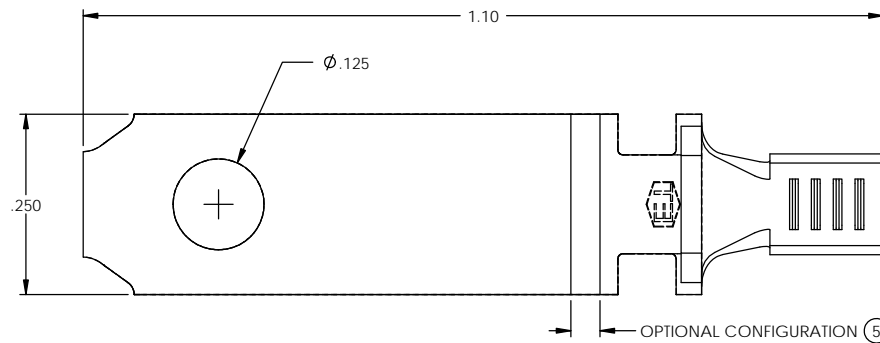


- NOTE:  
 1.) MAT'L: .028 THK., BRASS, #2 TEMPER (HALF HARD), ANNEALED TO TEMPER, PER ETCO METAL CODE NO. 00097.  
 2.) MAT'L: .028 THK., PER-TINNED BRASS, #2 TEMPER (HALF HARD), ANNEALED TO TEMPER. (7)  
 3.) FOR WINDING AND REWIND INSTRUCTIONS SEE PR-3-07.  
 4.) PARTS MAY BE COATED WITH A LIGHT FILM OF LUBRICATION USED IN THE MANUFACTURING PROCESS.  
 5.) WIRE RANGE: 14-18 AWG.

P/C	DESCRIPTION (6)	MAT'L	REWIND		
09939	SL817FFN-D-HB	NOTE 1	NO	X	X
14106	SL817FFN-A-HB	NOTE 1	NO	X	X
14108	SL817FFN-A-THB	NOTE 2	NO	X	X
14075	SL817FFN-ARC-HB	NOTE 1	YES	X	X

Rev.	Description of Change/ SCN#	Date
1	TRANSFERED FROM CP SCJ	10-27-04
2	SCN# 102818 & 102819 SCJ	1-18-05
3	SCN# 102918 SCJ	4-6-05
4	SCN# 140107 SCJ	2-1-07
5	ECR# 729 JMR	5-18-11
6	ECR# 816 SCJ	10-25-11
7	ECR# 1990 SCJ	2/18/13



## UNCONTROLLED COPY

THIRD ANGLE PROJECTION  
 TOLERANCES UNLESS OTHERWISE SPECIFIED  
 INCHES: XX -  $\pm .030$   
 .XXX -  $\pm .015$   
 ANGLES:  $\pm 5^\circ$

TOOL NO.  
0920

Title: NON-POLARIZED NOTCHED BLADE

DO NOT SCALE DWG.

Drawn By: S.JOHNSON

Date: 10-17-03



ETCO Incorporated  
 Engineered Products  
 25 Bellows Street  
 Warwick, RI 02888  
 Phone: (401) 467-2400  
 Fax: (401) 467-9230  
 www.ETCO.com

Chk'd/App'd By:

Scale:  
6X

Size  
B

Dwg. No.:

SL817FFN