

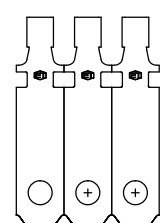
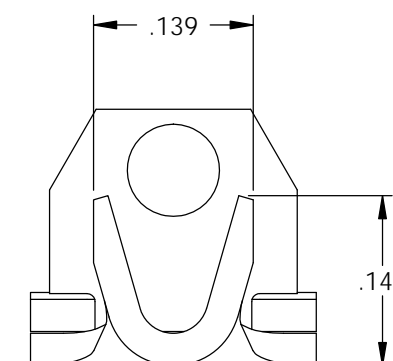
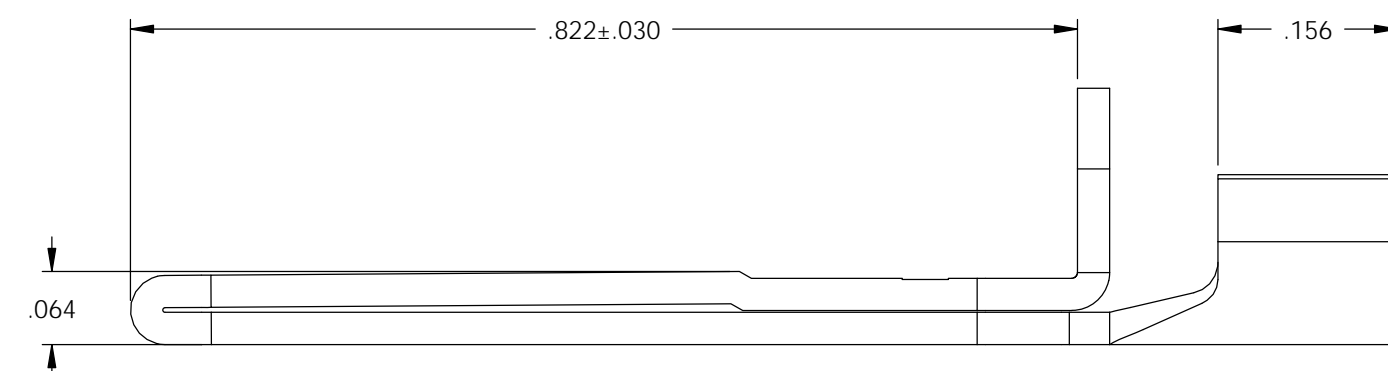
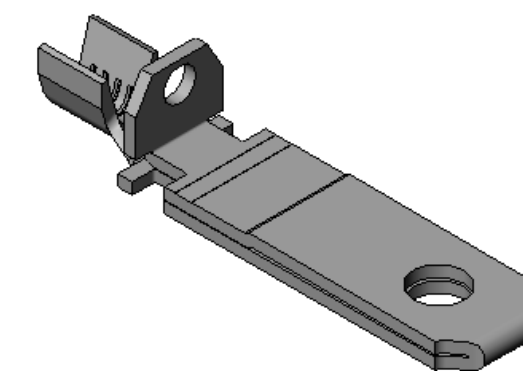
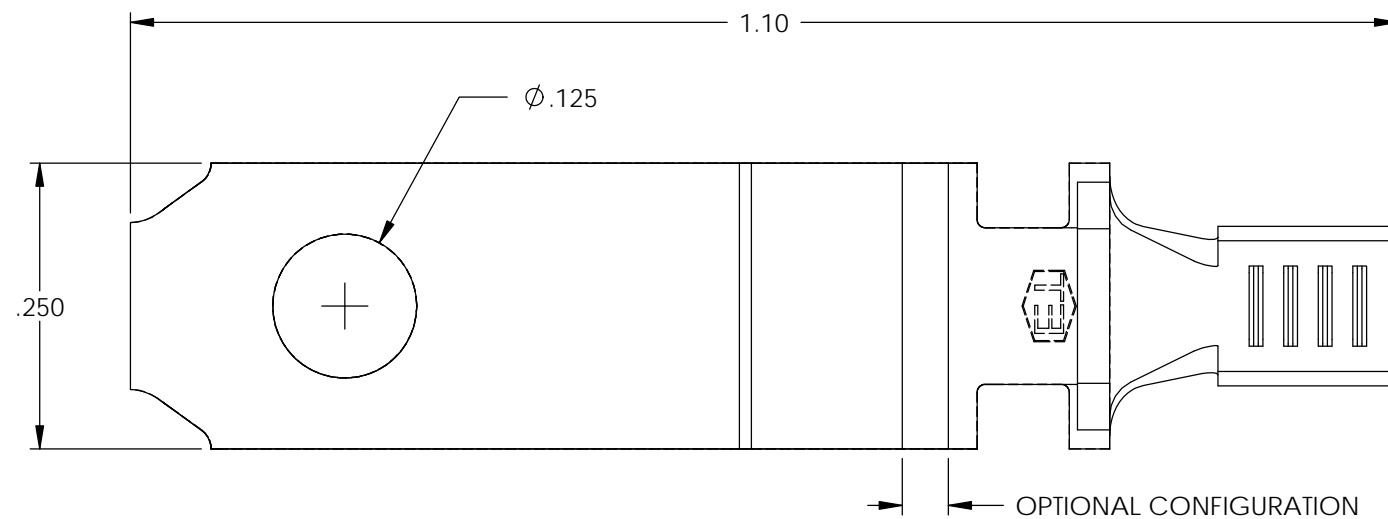


NOTE:

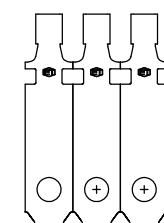
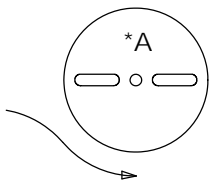
- 1.) MAT'L: .028 THK., BRASS, #2 TEMPER (HALF HARD), ANNEALED TO TEMPER, PER ETCO METAL CODE NO. 1-0097.
- 2.) MAT'L: .028 THK., PER-TINNED BRASS, #2 TEMPER (HALF HARD), ANNEALED TO TEMPER, (7) PER ETCO METAL CODE NO. 1-1705.
- 3.) MAT'L: .028 THK., PER-NICKEL PLATED BRASS, #2 TEMPER (HALF HARD), ANNEALED TO TEMPER, PER ETCO METAL CODE NO. 1-0099.
- 4.) FOR WINDING AND REWIND INSTRUCTIONS SEE PR-3-07.
- 5.) PARTS MAY BE COATED WITH A LIGHT FILM OF LUBRICATION USED IN THE MANUFACTURING PROCESS.
- 6.) WIRE RANGE: 14-18 AWG.

| P/C | DESCRIPTION (5) | MAT'L | REWIND |  |  |
|-------|--------------------|--------|--------|--|--|
| 09932 | SL817FN-A-NPHB | NOTE 3 | NO | | |
| 09938 | SL817FN-A-HB | NOTE 1 | NO | X | X |
| 09948 | SL817FN-DRB-HB (8) | NOTE 1 | YES | X | X |
| 09949 | SL817FN-D-HB | NOTE 1 | NO | X | X |
| 14381 | SL817FN-D-THB | NOTE 2 | NO | X | X |
| 14382 | SL817FN-A-THB (7) | NOTE 2 | NO | X | X |

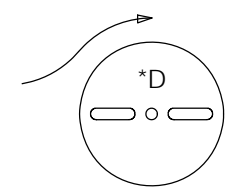
| Rev. | Description of Change/ SCN# | Date |
|------|-----------------------------|----------|
| 1 | TRANSFERED FROM CP SCJ | 10-27-04 |
| 2 | SCN# 102818 & 102819 SCJ | 1-18-05 |
| 3 | SCN# 102918 SCJ | 4-6-05 |
| 4 | SCN# 140092 SCJ | 1-2-07 |
| 5 | ECR# 816 SCJ | 10-25-11 |
| 6 | ECR# 1740 SCJ | 10-18-12 |
| 7 | ECR# 1838 SCJ | 11-29-12 |
| 8 | ECR# 3595 SCJ | 2/25/15 |



DIRECTION EXITING TOOL, EARS DOWN, TO THE BACK SEE NOTE 4




DIRECTION EXITING TOOL, EARS DOWN, TO THE BACK SEE NOTE 4



UNCONTROLLED COPY

THIRD ANGLE PROJECTION
TOLERANCES UNLESS OTHERWISE SPECIFIED
INCHES: .XX - ±.030
.XXX - ±.015
ANGLES: ±5°

TOOL NO.
0920



Title: **NON-POLARIZED NOTCHED BLADE**

DO NOT SCALE DWG. Drawn By: S.JOHNSON Date: 10-17-03

Chk'd/App'd By: Scale: 6X Size B

Dwg. No.: **SL817FN cust**

ETCO Incorporated
Engineered Products
25 Bellows Street
Warwick, RI 02888
Phone: (401) 467-2400
Fax: (401) 467-9230
www.ETCO.com