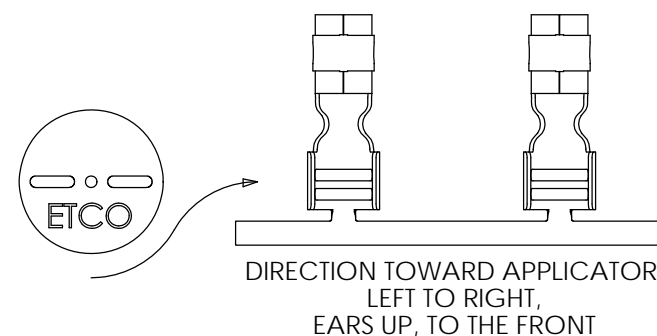
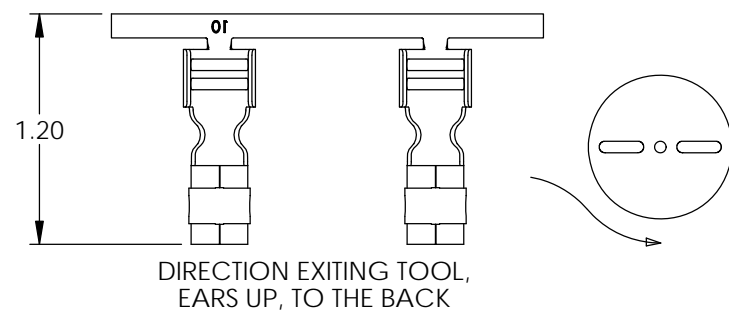
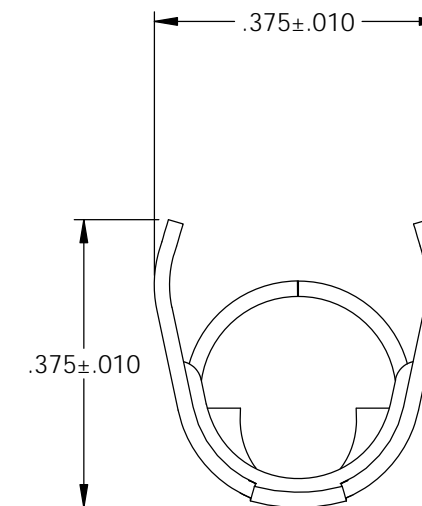
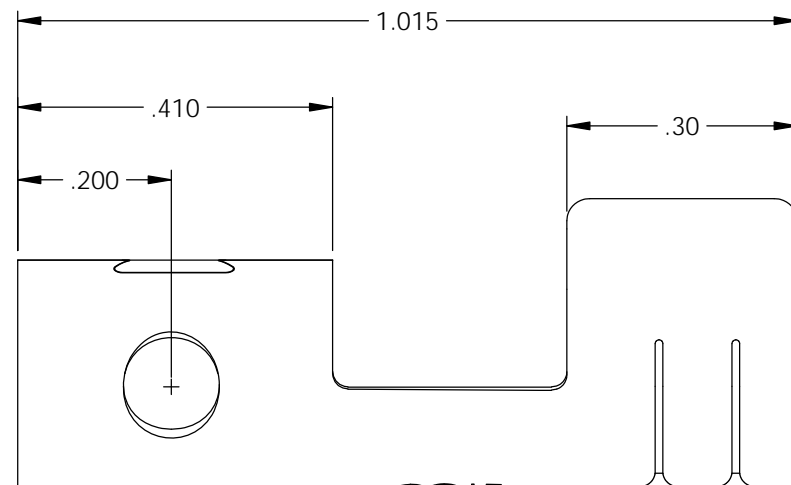
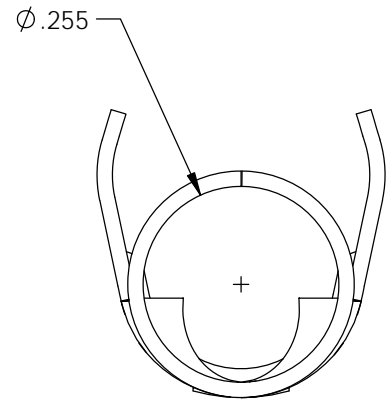
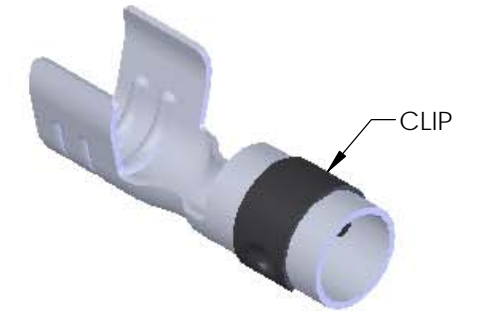
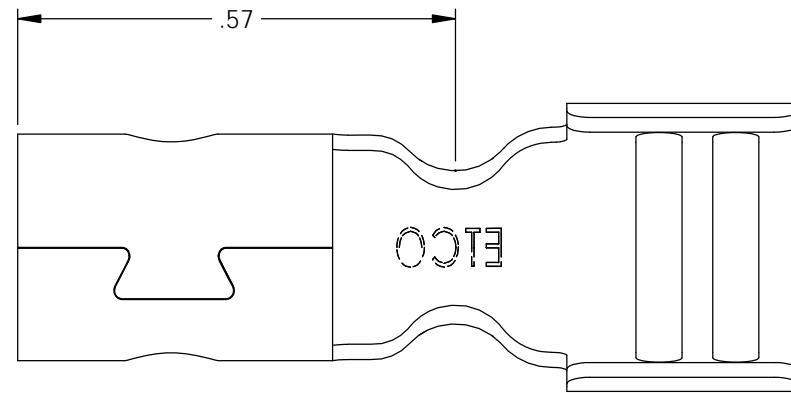


NOTES:

1. MATERIAL: .020 THICK, ELECTRO-GALVANIZED ZINC PLATED STEEL, #3 TEMPER (1/4 HARD) PER ETCO METAL CODE 0-0102.
2. MATERIAL: .020 THICK, S430 STAINLESS STEEL, BRIGHT ANNEALED, PER ETCO METAL CODE 0-0050.
3. MATERIAL: .020 THICK, PRE-NICKEL PLATED STEEL, #2 TEMPER (HALF HARD), PER ETCO METAL CODE 0-0030.
4. PARTS MAY BE COATED WITH A LIGHT FILM OF LUBRICATION USED IN THE MANUFACTURING PROCESS.
5. WIRE RANGE: 7mm CABLE.
6. FOR MAXIMUM PERFORMANCE AND RELIABILITY, ALWAYS USE ETCO ENGINEERED IGNITION TERMINALS WITH ETCO AUTOMOTIVE INSULATOR BOOTS.

P/C	DESCRIPTION	MAT'L	CLIP
09762	SP10-NPS	NOTE 4	SCA4-B
09761	SP10-SS	NOTE 2	SCA4-B
15033	SP10-BZS	NOTE 1	SCA4-B

Rev.	Description of Change/ SCN#	Date
1	Redrawn in Solidworks, ECR#4870 SCJ Org.Eng.Dwg.Date 05/28/87	3/05/19



THIS PRINT IS THE PROPERTY OF ETCO INCORPORATED. NO PART OF THIS DESIGN MAY BE USED IN ANY WAY WITHOUT WRITTEN CONSENT FROM ETCO INCORPORATED.

UNCONTROLLED COPY

<p>THIRD ANGLE PROJECTION TOLERANCES UNLESS OTHERWISE SPECIFIED INCHES: .XX - ±.030 .XXX - ±.015 ANGLES: ±5°</p>	<p>TOOL NO. 2045, 2001, 2060, 2109</p>	<p>Title: SPARK PLUG TERMINAL</p>	
	<p>DO NOT SCALE DWG.</p>	<p>Drawn By: S.Johnson</p>	<p>Date: 3/05/19</p>
	<p>ETCO Incorporated Engineered Products 25 Bellows Street Warwick, RI 02888 Phone: (401) 467-2400 Fax: (401) 467-9230 www.ETCO.com</p>	<p>Design Control By: ETCO</p>	<p>Scale: 4X Size B</p>
		<p>Dwg. No.: SP10 cust</p>	