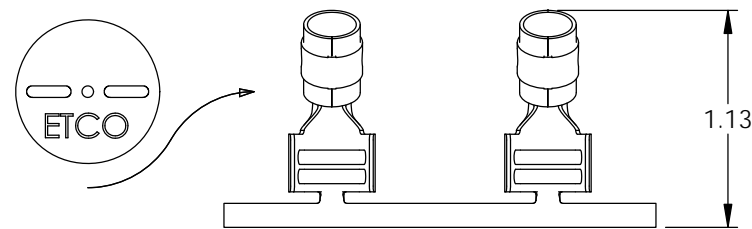
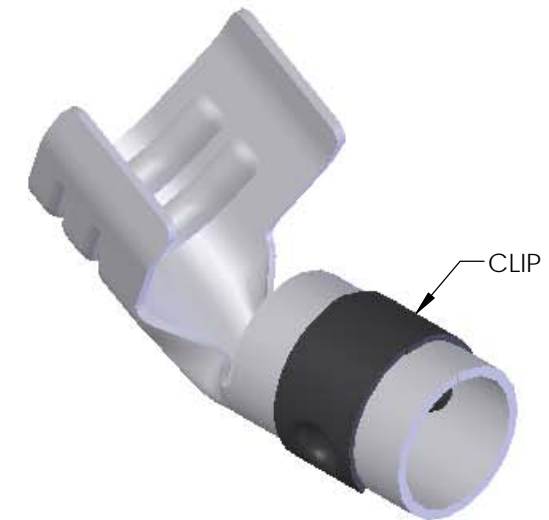
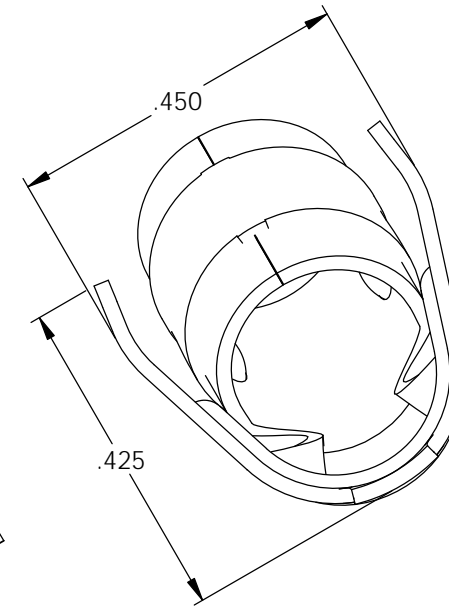
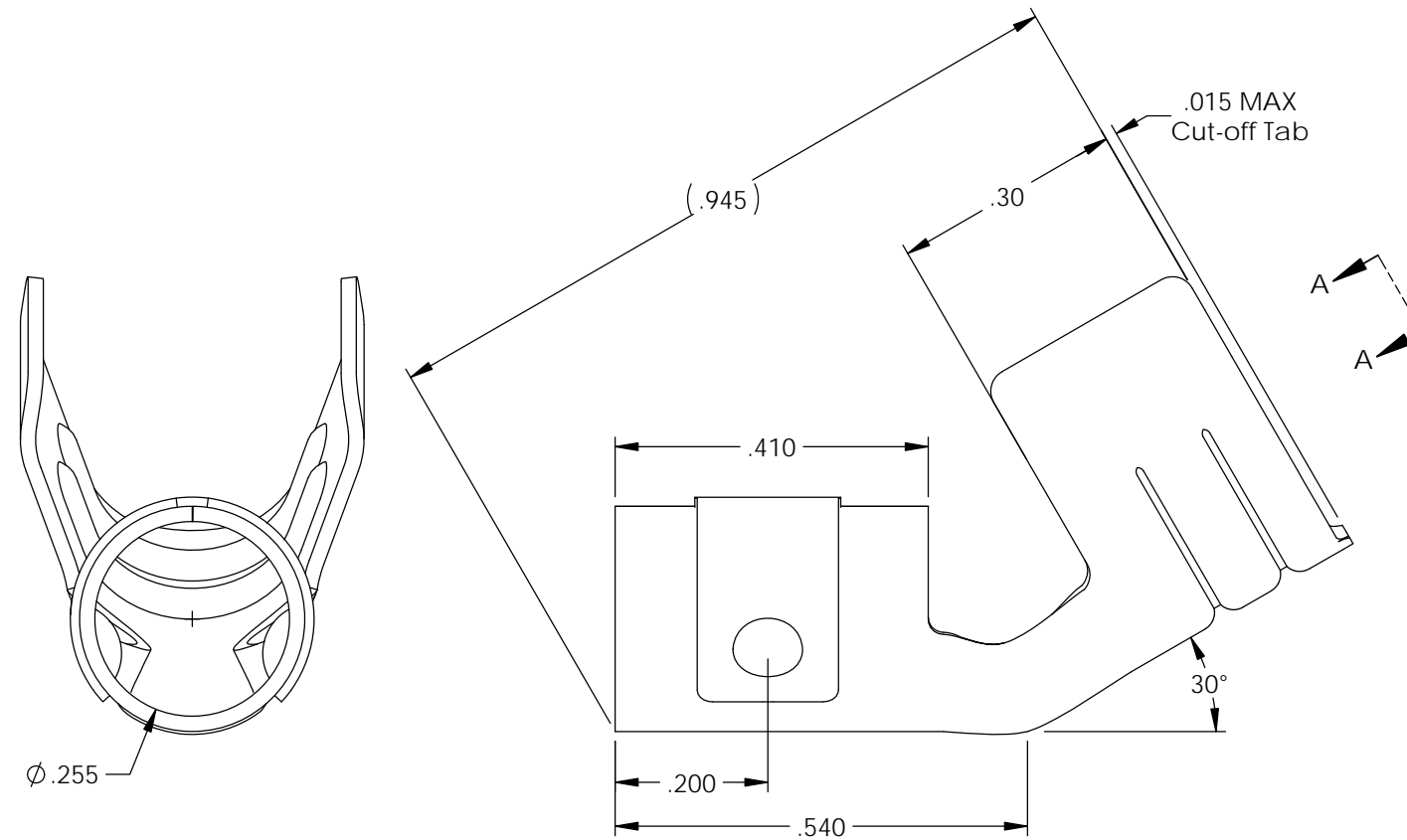
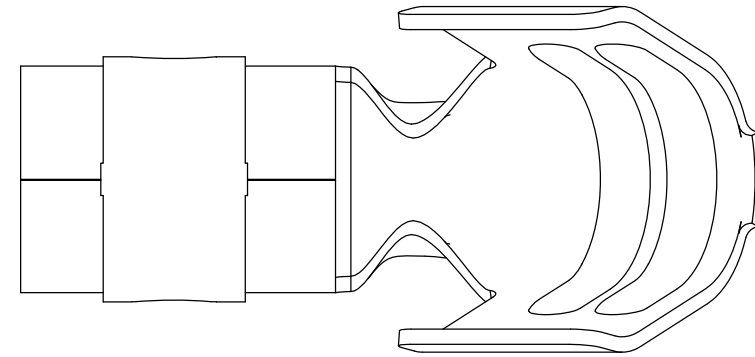


NOTES:

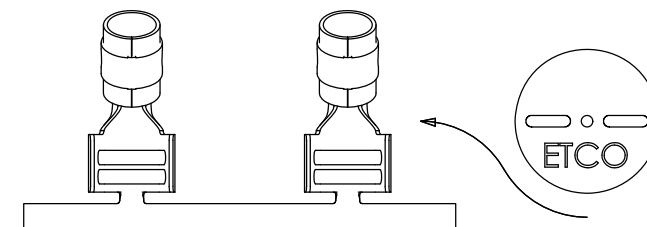
1. MATERIAL: .020 THICK, ELECTRO-GALVANIZED ZINC PLATED STEEL, #3 TEMPER (1/4 HARD) PER ETCO METAL CODE 0-0102.
2. MATERIAL: .020 THICK, S430 STAINLESS STEEL, BRIGHT ANNEALED, PER ETCO METAL CODE 0-0050.
3. PARTS MAY BE COATED WITH A LIGHT FILM OF LUBRICATION USED IN THE MANUFACTURING PROCESS.
4. WIRE RANGE: 8mm CABLE.
5. FOR MAXIMUM PERFORMANCE AND RELIABILITY, ALWAYS USE ETCO ENGINEERED IGNITION TERMINALS WITH ETCO AUTOMOTIVE INSULATOR BOOTS.

P/C	DESCRIPTION	MAT'L	REWIND
15096	SP11-BZS-150	NOTE 1	NO
15299	SP11-BZS-150-R	NOTE 1	YES
15142	SP11-SS-150	NOTE 2	NO
22033	SP11-SS-150-R	NOTE 2	YES

Rev.	Description of Change/ SCN#	Date
2	Redrawn in Solidworks, ECR#4870 SCJ Org.Eng.Dwg.Date 04/23/91	2/26/18



SP11-XXX-150
DIRECTION TOWARD APPLICATOR,
LEFT TO RIGHT,
EARS UP, TO THE FRONT



SP11-XXX-150-R
DIRECTION TOWARD APPLICATOR,
RIGHT TO LEFT,
EARS UP, TO THE FRONT

UNCONTROLLED COPY

<p>THIRD ANGLE PROJECTION TOLERANCES UNLESS OTHERWISE SPECIFIED INCHES: .XX - ±.030 .XXX - ±.015 ANGLES: ±5°</p>	<p>TOOL NO. 2060, 2086</p>	<p>Title: SPARK PLUG TERMINAL</p>		
		<p>DO NOT SCALE DWG.</p>	<p>Drawn By: S.Johnson</p>	<p>Date: 2/26/18</p>
<p>ETCO Incorporated Engineered Products 25 Bellows Street Warwick, RI 02888 Phone: (401) 467-2400 Fax: (401) 467-9230 www.ETCO.com</p>		<p>Chk'd/App'd By:</p>	<p>Scale: 4X</p>	<p>Size B</p>
<p>Dwg. No.: SP11-150 cust</p>				