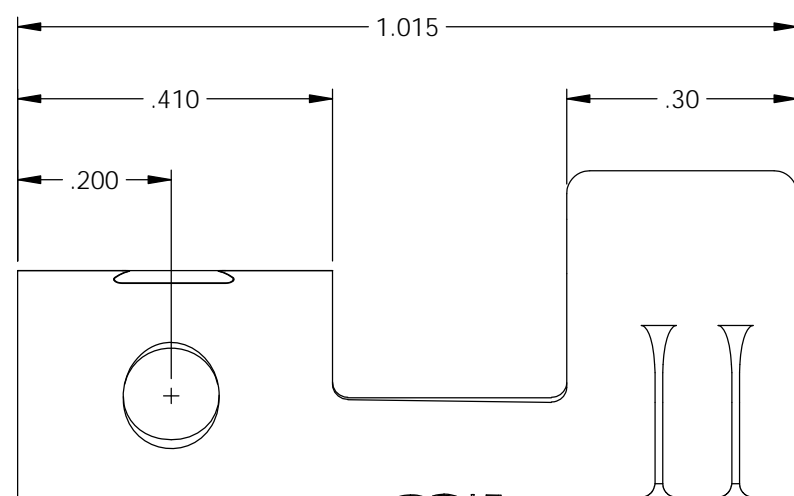
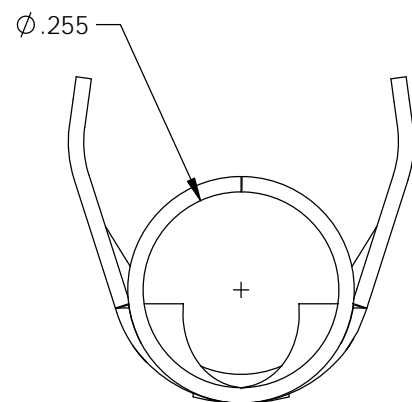
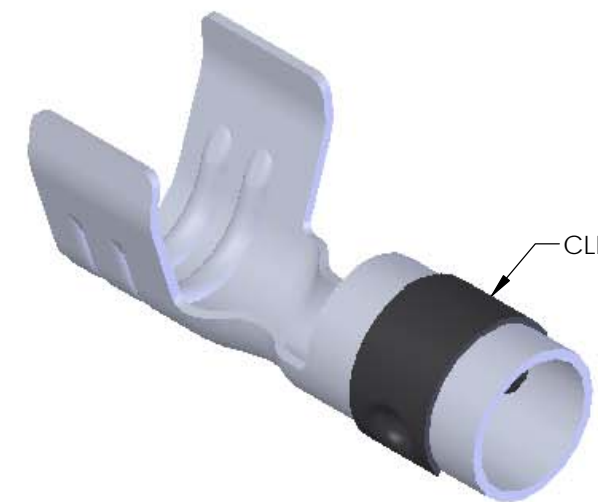
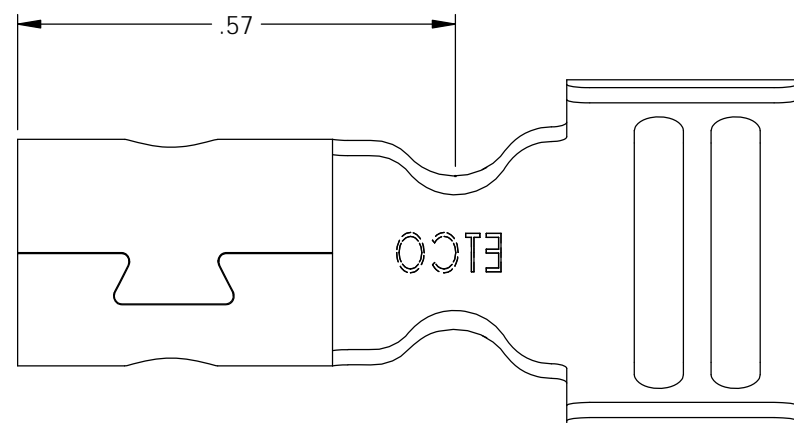


NOTES:

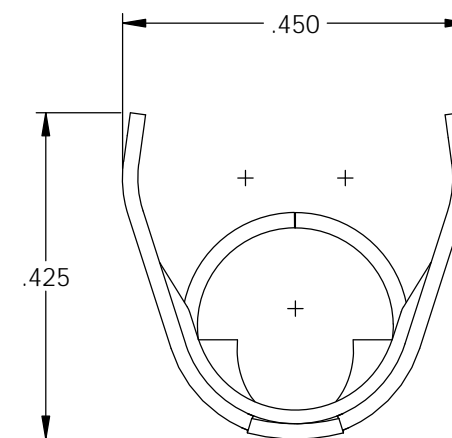
1. MATERIAL: .020 THICK, ELECTRO-GALVANIZED ZINC PLATED STEEL, #3 TEMPER (1/4 HARD) PER ETCO METAL CODE 0-0102.
2. MATERIAL: .020 THICK, S430 STAINLESS STEEL, BRIGHT ANNEALED, PER ETCO METAL CODE 00050.
3. MATERIAL: .020 THICK, PRE-NICKEL PLATED STEEL, #2 TEMPER (HALF HARD), PER ETCO METAL CODE 0-0023.
4. PARTS MAY BE COATED WITH A LIGHT FILM OF LUBRICATION USED IN THE MANUFACTURING PROCESS.
5. WIRE RANGE: 8mm CABLE.
6. PARTS ARE PRODUCED IN LOOSE PIECE FORM.

P/C	DESCRIPTION	MAT'L	CLIP
09754	SP11-SS-X	NOTE 2	SCA4-B
09758	SP11-NPS-X	NOTE 3	SCA4-B
15031	SP11-BZS-X	NOTE 1	SCA4-B

Rev.	Description of Change/ SCN#	Date
1	Redrawn in Solidworks, ECR#4870 SCJ	2/28/18
2	ECR#5220 SMK	8/8/18



USE ETCO STAMP ON DIE SIDE



UNCONTROLLED COPY

<p>THIRD ANGLE PROJECTION TOLERANCES UNLESS OTHERWISE SPECIFIED INCHES: .XX - ±.030 .XXX - ±.015 ANGLES: ±5°</p>	<p>TOOL NO. 2060, 2086, 2044</p>	<p>Title: SPARK PLUG TERMINAL</p>		
		<p>DO NOT SCALE DWG.</p>	<p>Drawn By: S.Johnson</p>	<p>Date: 2/09/18</p>
<p>ETCO Incorporated Engineered Products 25 Bellows Street Warwick, RI 02888 Phone: (401) 467-2400 Fax: (401) 467-9230 www.ETCO.com</p>		<p>Chk'd/App'd By:</p>	<p>Scale: 4X</p>	<p>Size B</p>
		<p>Dwg. No.: SP11-X cust</p>		