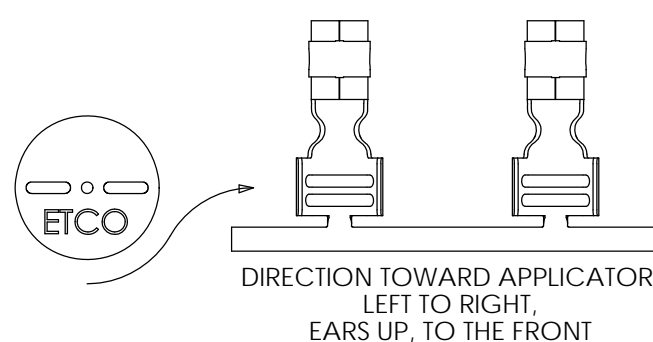
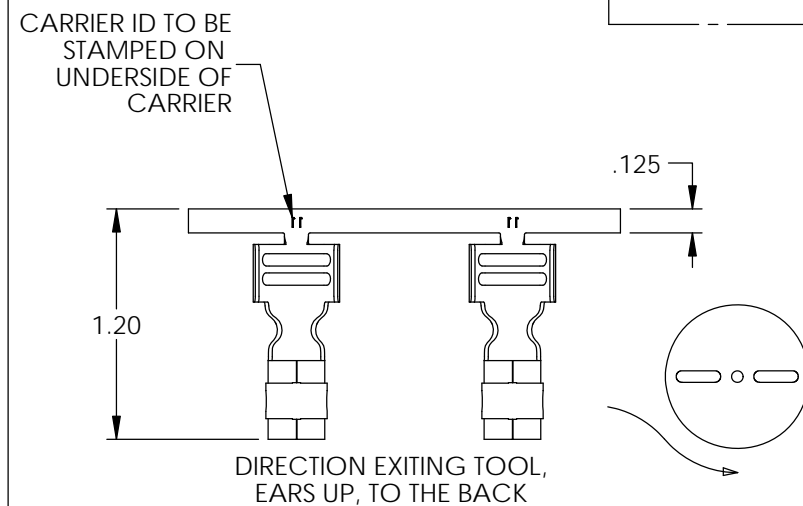
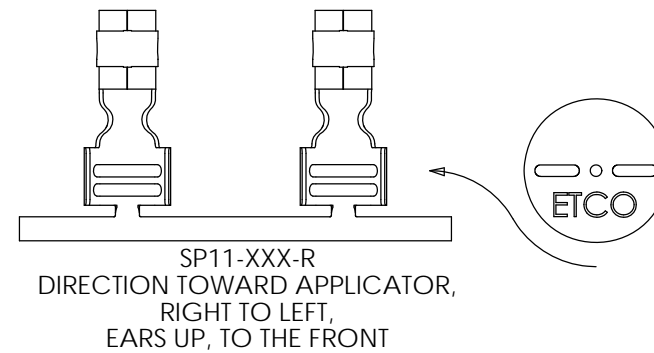
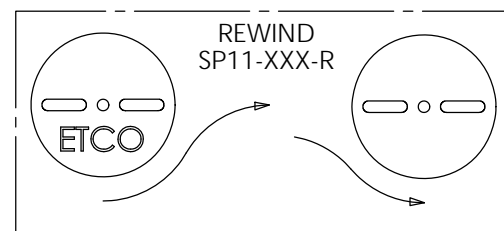
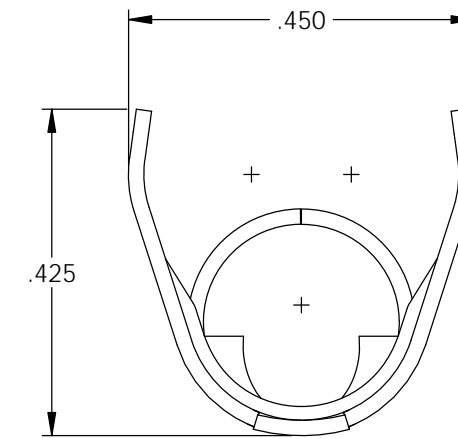
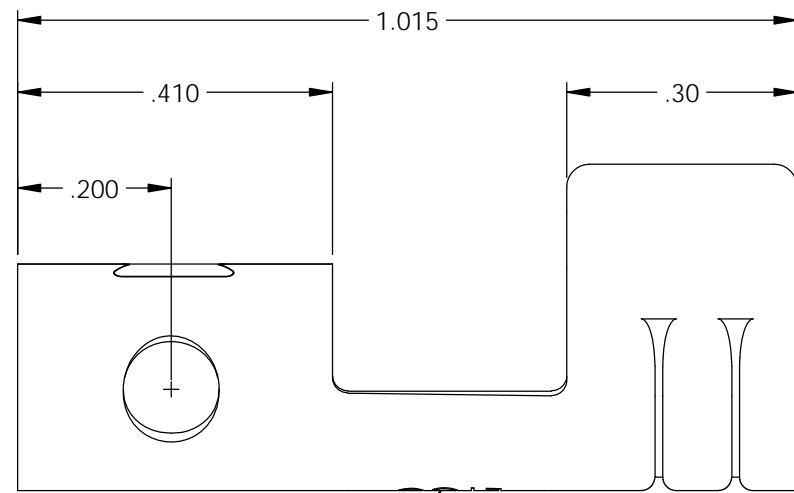
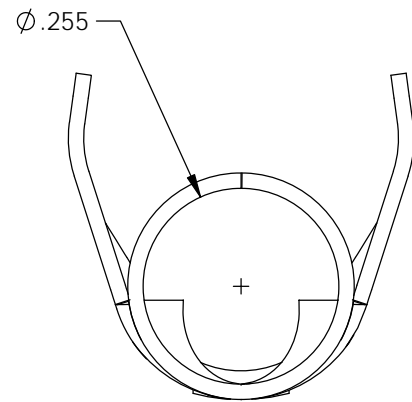
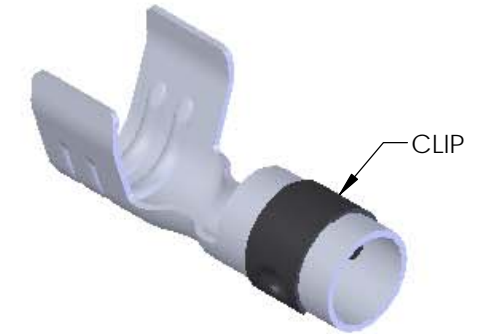
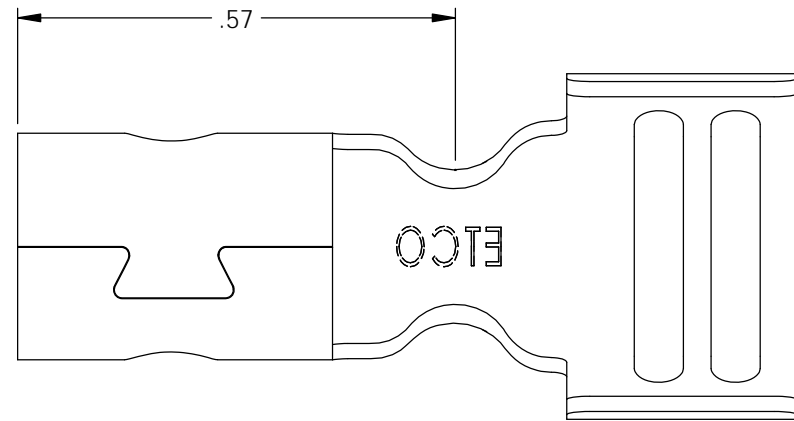


NOTES:

1. MATERIAL: .020 THICK, ELECTRO-GALVANIZED ZINC PLATED STEEL, #3 TEMPER (1/4 HARD) PER ETCO METAL CODE 0-0102.
2. MATERIAL: .020 THICK, S430 STAINLESS STEEL, BRIGHT ANNEALED, PER ETCO METAL CODE 0-0050.
3. MATERIAL: .020 THICK, S304 STAINLESS STEEL, ANNEALED, PER ETCO METAL CODE 0-0117.
4. MATERIAL: .020 THICK, PRE-NICKEL PLATED STEEL, #2 TEMPER (HALF HARD), PER ETCO METAL CODE 0-0030.
5. PARTS MAY BE COATED WITH A LIGHT FILM OF LUBRICATION USED IN THE MANUFACTURING PROCESS.
6. WIRE RANGE: 8mm CABLE.

P/C	DESCRIPTION	MAT'L	REWIND	CLIP
09767	SP11-NPS	NOTE 4	NO	SCA4-B
09794	SP11-SS	NOTE 2	NO	SCA4-B
15034	SP11-BZS	NOTE 1	NO	SCA4-B
15179	SP11-BZS-R	NOTE 1	YES	SCA4-B
15328	SP11-SS-304	NOTE 3	NO	SCA4-B
22032	SP11-SS-SC	NOTE 2	NO	SCA570

Rev.	Description of Change/ SCN#	Date
1	Redrawn in Solidworks, ECR#4870 SCJ	2/28/18
2	ECR#5220 SMK	8/8/18



THIS PRINT IS THE PROPERTY OF ETCO INCORPORATED. NO PART OF THIS DESIGN MAY BE USED IN ANY WAY WITHOUT WRITTEN CONSENT FROM ETCO INCORPORATED.

UNCONTROLLED COPY

<p>THIRD ANGLE PROJECTION TOLERANCES UNLESS OTHERWISE SPECIFIED INCHES: .XX - ±.030 .XXX - ±.015 ANGLES: ±5°</p>	<p>TOOL NO. 2060, 2086, 2044</p>	<p>Title: SPARK PLUG TERMINAL</p>	
	<p>DO NOT SCALE DWG.</p>	<p>Drawn By: S.Johnson</p>	<p>Date: 2/09/18</p>
	<p>ETCO Incorporated Engineered Products 25 Bellows Street Warwick, RI 02888 Phone: (401) 467-2400 Fax: (401) 467-9230 www.ETCO.com</p>	<p>Chk'd/App'd By:</p>	<p>Scale: 4X Size B</p>
		<p>Dwg. No.: SP11 cust</p>	