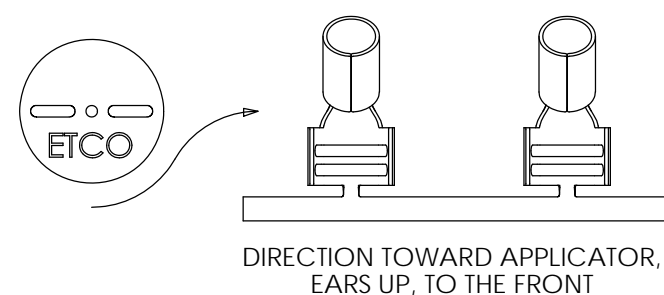
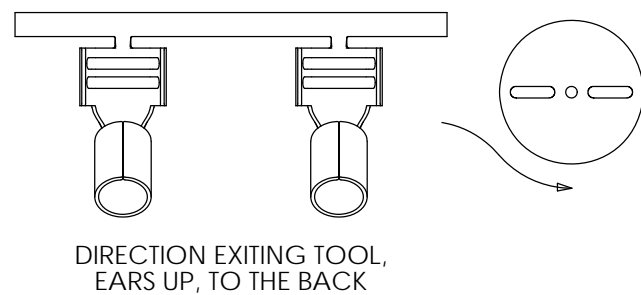
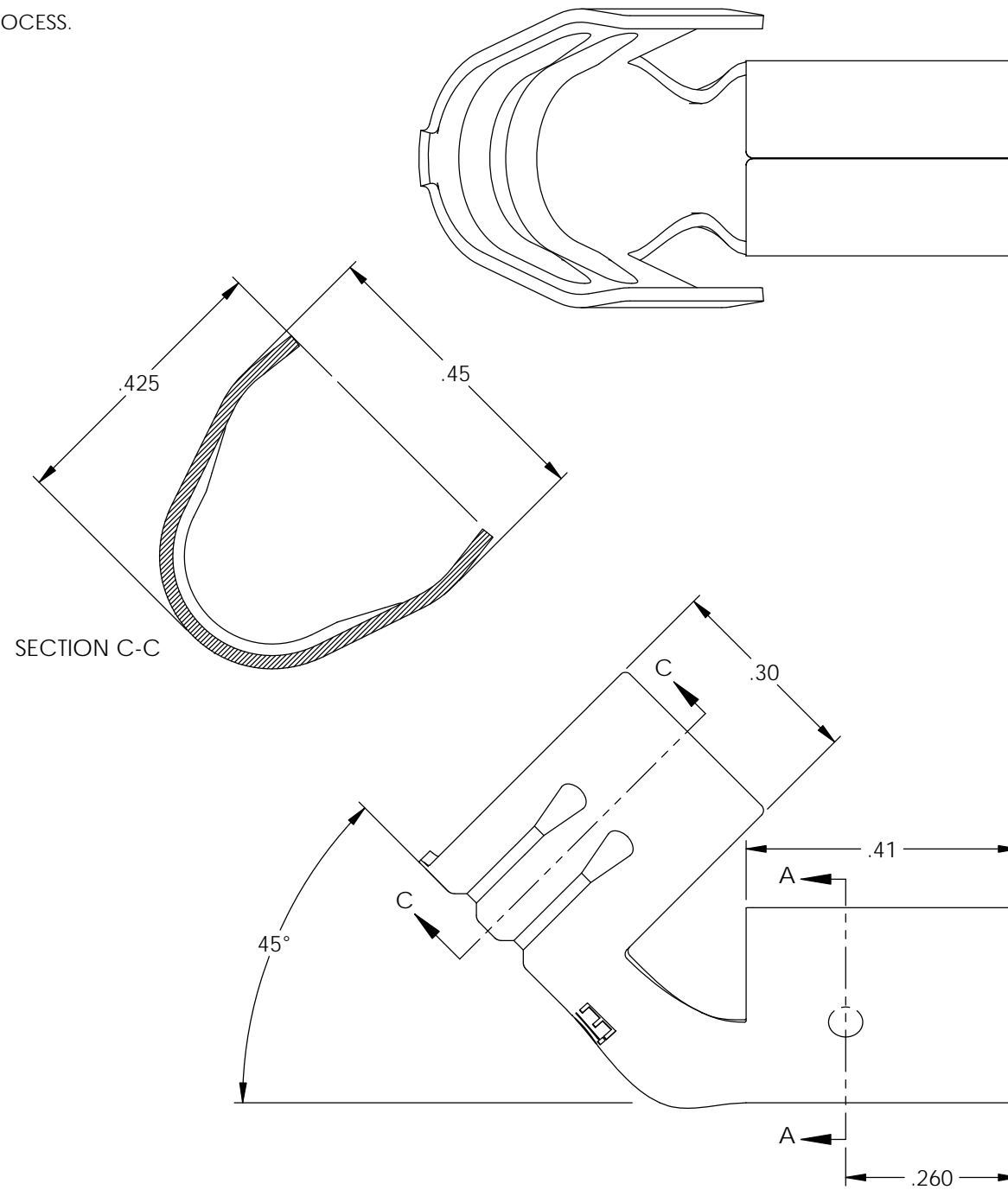


Rev.	Description of Change/ SCN#	Date
1	ECR# 4870 SCJ Redrawn in SW from ACAD Org.Eng.Dwg.Date: 4/03/89	6/03/19

- NOTES:
 1. MATERIAL: .020 THICK, ELECTRO-GALVANIZED ZINC ^① PLATED STEEL, #3 TEMPER (1/4 HARD) PER ETCO METAL CODE 0-0102.
 2. PARTS MAY BE COATED WITH A LIGHT FILM OF LUBRICATION USED IN THE MANUFACTURING PROCESS.
 3. WIRE RANGE: 8mm..
 4. PARTS ARE PRODUCED IN LOOSE PIECE FORM.

P/C	DESCRIPTION	MAT'L
15038	SP15-BZS-135-X	NOTE 1



THIS PRINT IS THE PROPERTY OF ETCO INCORPORATED. NO PART OF THIS DESIGN MAY BE USED IN ANY WAY WITHOUT WRITTEN CONSENT FROM ETCO INCORPORATED.

UNCONTROLLED COPY

 THIRD ANGLE PROJECTION TOLERANCES UNLESS OTHERWISE SPECIFIED INCHES: .XX - ±.030 .XXX - ±.015 ANGLES: ±5°	TOOL NO. 2040	Title: Spark Plug Terminal		
		DO NOT SCALE DWG.	Drawn By: S.Johnson	Date: 6/03/19
ETCO Incorporated Engineered Products 25 Bellows Street Warwick, RI 02888 Phone: (401) 467-2400 Fax: (401) 467-9230 www.ETCO.com		Design Control By: ETCO	Scale: 4X	Size B
		Dwg. No.: SP15-135-X cust		