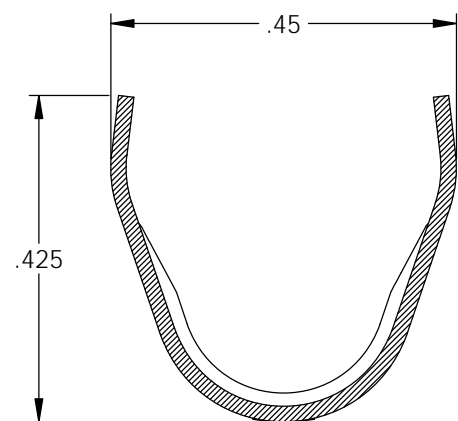
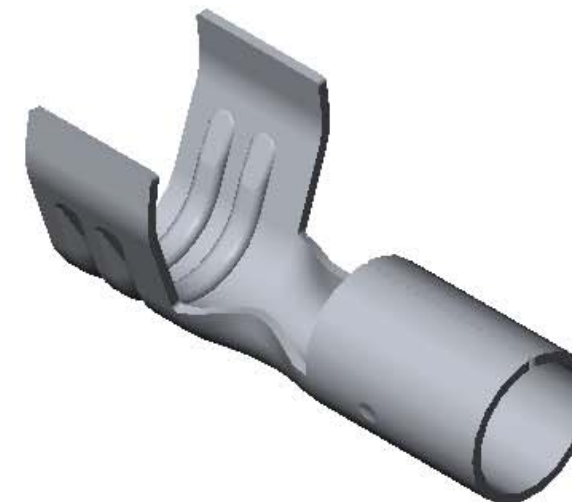
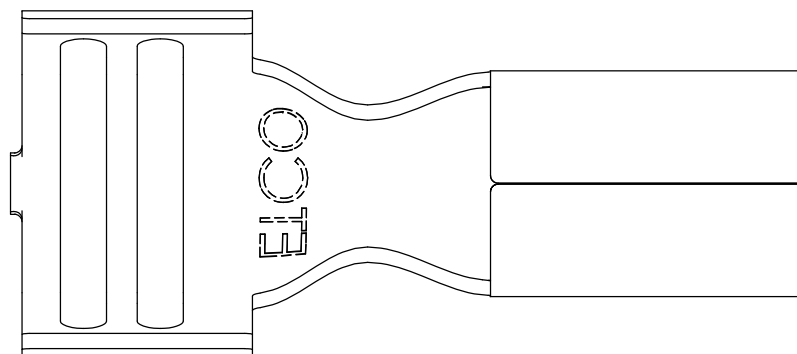


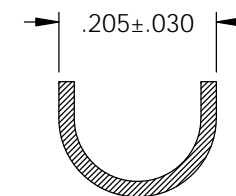
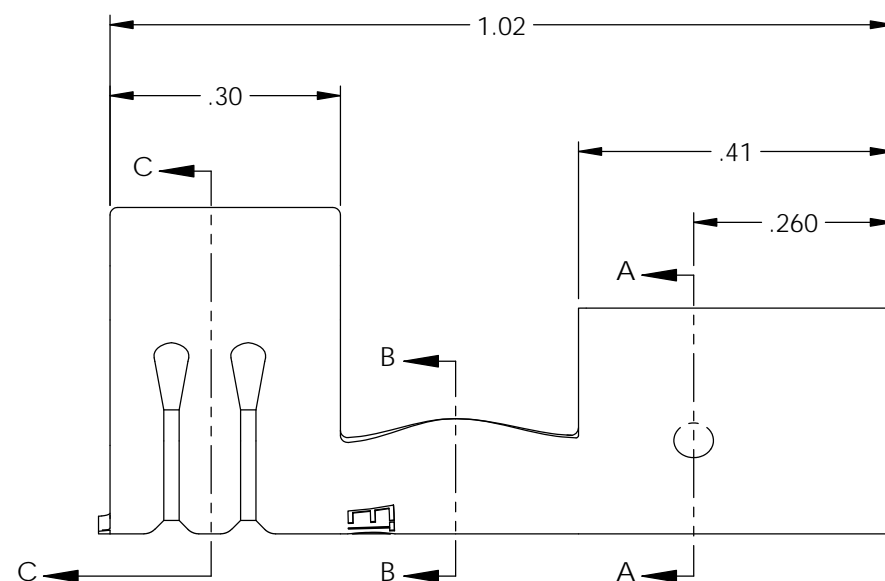
- NOTES:
 1. MATERIAL: .020 THICK, ELECTRO-GALVANIZED ZINC ^① PLATED STEEL, #3 TEMPER (1/4 HARD) PER ETCO METAL CODE 0-0102.
 2. MATERIAL: .020 THICK, PRE-NICKEL PLATED STEEL, #2 TEMPER (1/2 HARD) PER ETCO METAL CODE 0-0030.
 3. PARTS MAY BE COATED WITH A LIGHT FILM OF LUBRICATION USED IN THE MANUFACTURING PROCESS.
 4. WIRE RANGE: 8mm.

Rev.	Description of Change/ SCN#	Date
1	ECR# 4870 SCJ Redrawn in SW from ACAD Org.Eng.Dwg.Date: 4/03/89	6/03/19

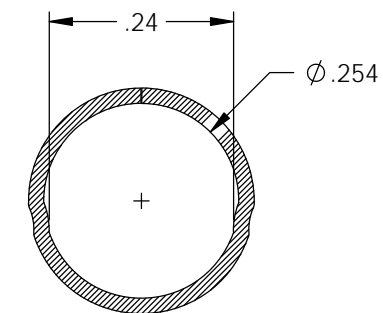
P/C	DESCRIPTION	MAT'L
15037	SP15-BZS	NOTE 1
22042	SP15-NPS	NOTE 2



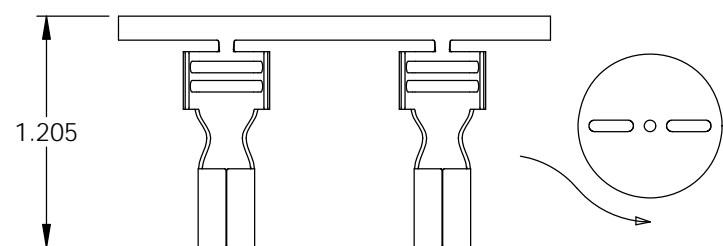
SECTION C-C



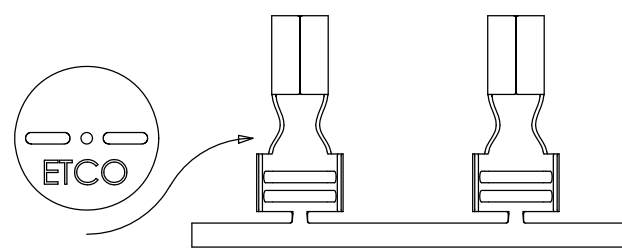
SECTION B-B



SECTION A-A



DIRECTION EXITING TOOL, EARS UP, TO THE BACK



DIRECTION TOWARD APPLICATOR, EARS UP, TO THE FRONT

THIS PRINT IS THE PROPERTY OF ETCO INCORPORATED. NO PART OF THIS DESIGN MAY BE USED IN ANY WAY WITHOUT WRITTEN CONSENT FROM ETCO INCORPORATED.

UNCONTROLLED COPY

<p>THIRD ANGLE PROJECTION TOLERANCES UNLESS OTHERWISE SPECIFIED INCHES: .XX - ±.030 .XXX - ±.015 ANGLES: ±5°</p>	TOOL NO.	Title: Spark Plug Terminal		
	2040	DO NOT SCALE DWG.	Drawn By: S.Johnson	Date: 6/03/19
	ETCO Incorporated Engineered Products 25 Bellows Street Warwick, RI 02888 Phone: (401) 467-2400 Fax: (401) 467-9230 www.ETCO.com	Design Control By:	Scale: 4X	Size B
		Dwg. No.: SP15 cust		