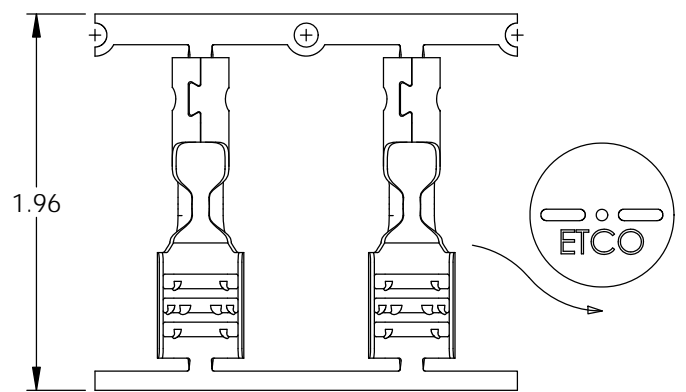
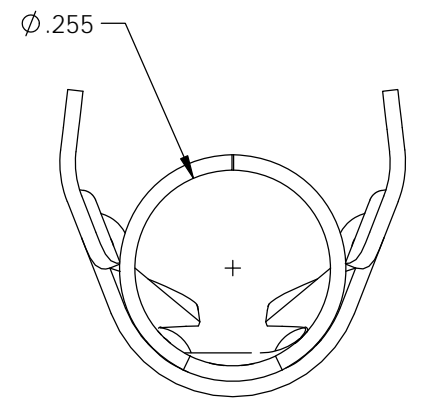
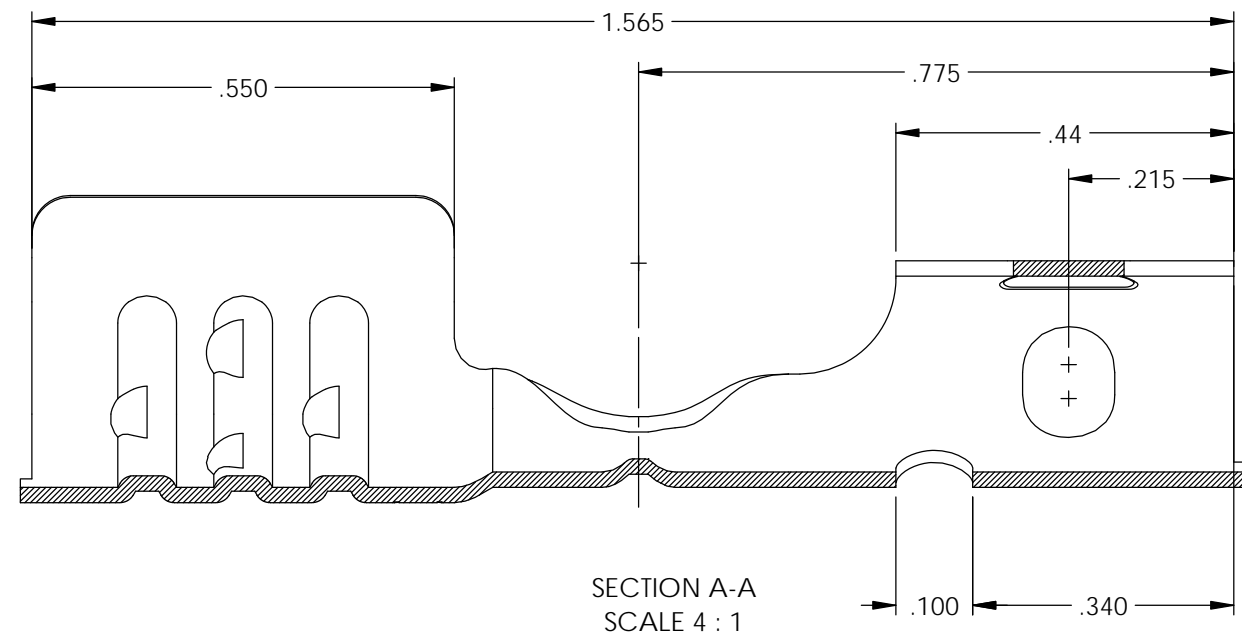
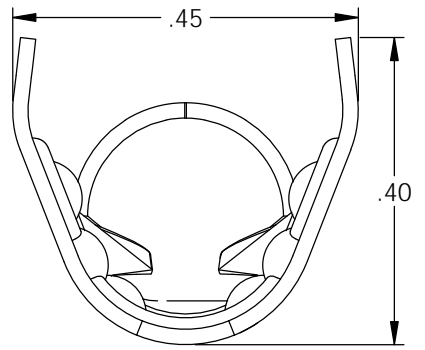
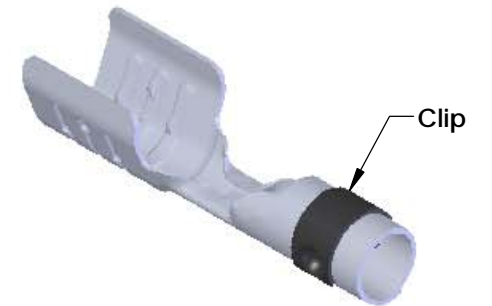
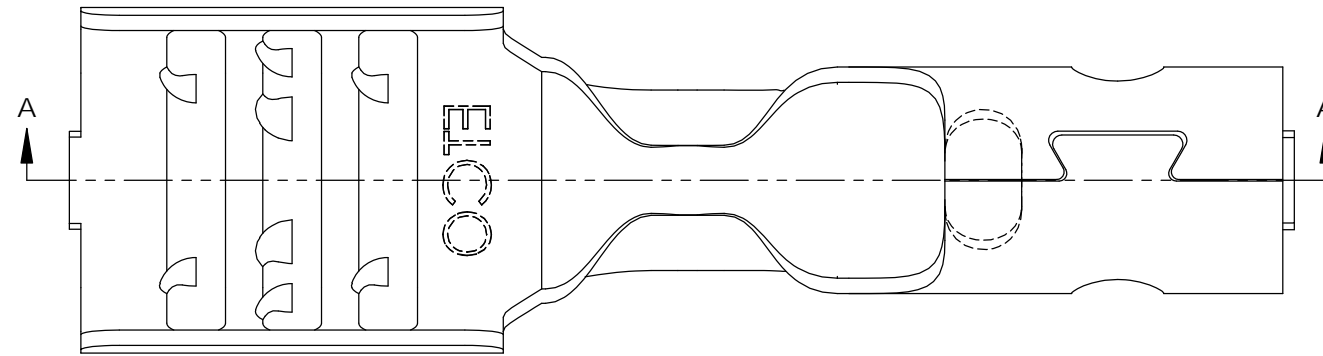


NOTES:

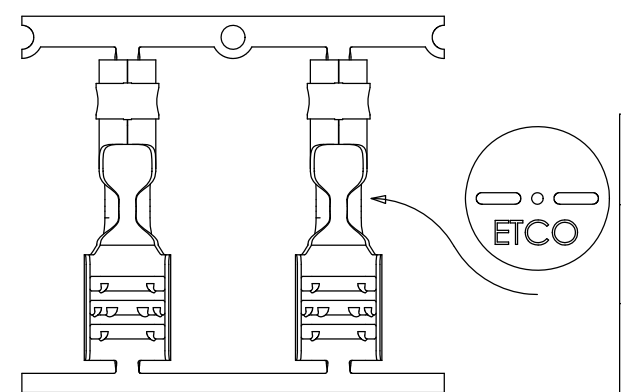
1. MATERIAL: .020 THICK, ELECTRO-GALVANIZED ZINC ^① PLATED STEEL, #3 TEMPER (1/4 HARD) PER ETCO METAL CODE 0-0109.
2. MATERIAL: .020 THICK, S430 STAINLESS STEEL, BRIGHT ANNEALED,
3. PARTS MAY BE COATED WITH A LIGHT FILM OF LUBRICATION USED IN THE MANUFACTURING PROCESS.
4. WIRE RANGE: 8mm.

P/C	DESCRIPTION	MAT'L	CLIP
15066	SP19-BZS-S	NOTE 1	SCA4-B
15065	SP19-SS-S	NOTE 2	SCA4-B
22044	SP19-SS-S-SC	NOTE 2	SCA4-SS

Rev.	Description of Change/ SCN#	Date
1	ECR# 4870 SCJ Redrawn in SW from ACAD Org.Eng.Dwg.Date: 12/18/89	5/02/19



DIRECTION EXITING TOOL, EARS UP, TO THE FRONT



DIRECTION TOWARD APPLICATION, EARS UP TO THE BACK, FROM RIGHT

THIS PRINT IS THE PROPERTY OF ETCO INCORPORATED. NO PART OF THIS DESIGN MAY BE USED IN ANY WAY WITHOUT WRITTEN CONSENT FROM ETCO INCORPORATED.

UNCONTROLLED COPY

THIRD ANGLE PROJECTION
TOLERANCES UNLESS OTHERWISE SPECIFIED
INCHES: .XX - ±.030
.XXX - ±.015
ANGLES: ±5°

TOOL NO.
2165



Title: **Spark Plug Terminal**

DO NOT SCALE DWG.

ETCO Incorporated
Engineered Products
25 Bellows Street
Warwick, RI 02888
Phone: (401) 467-2400
Fax: (401) 467-9230
www.ETCO.com

Drawn By: **S.Johnson** Date: **5/02/19**

Design Control By: **ETCO** Scale: **4X** Size: **B**

Dwg. No.: **SP19-S cust**