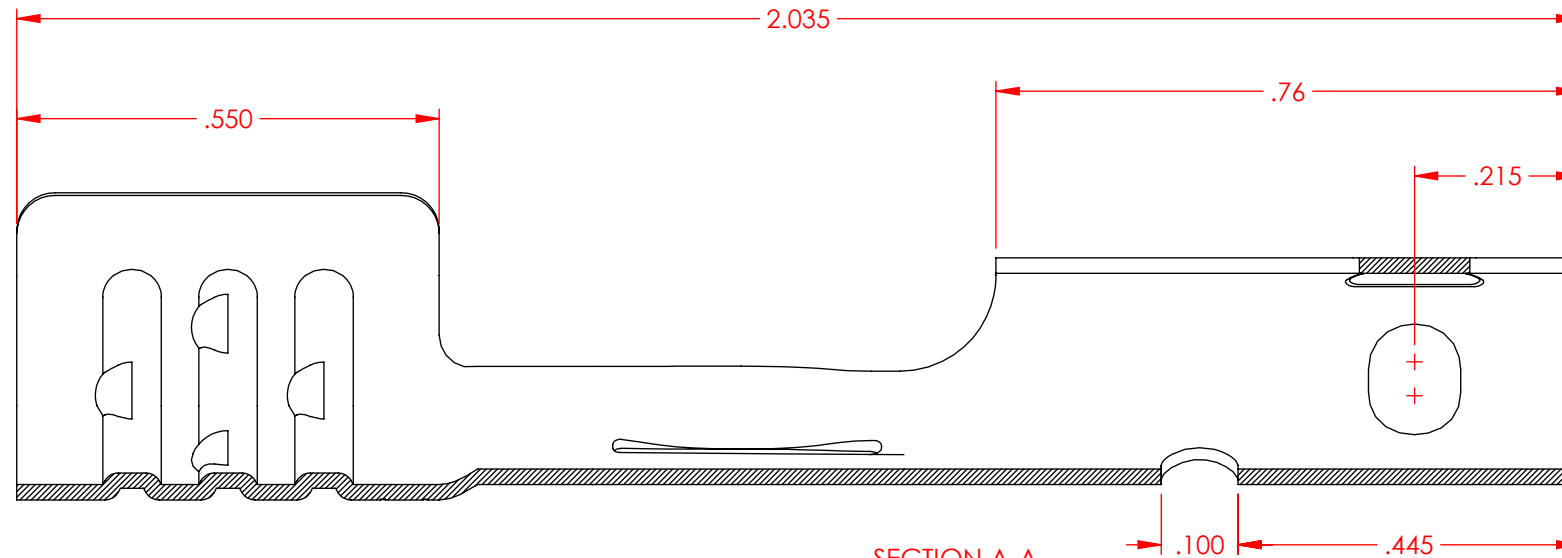
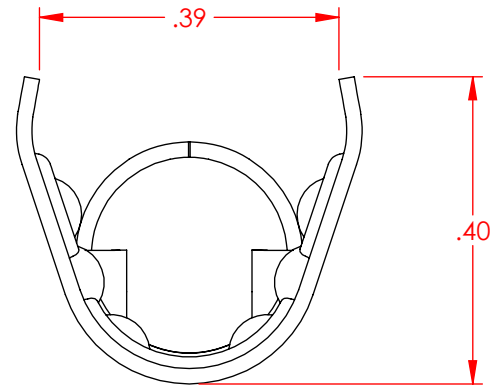
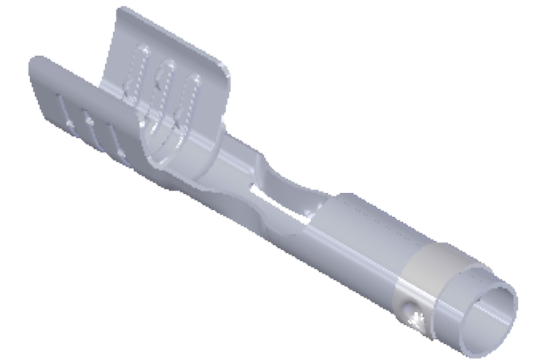
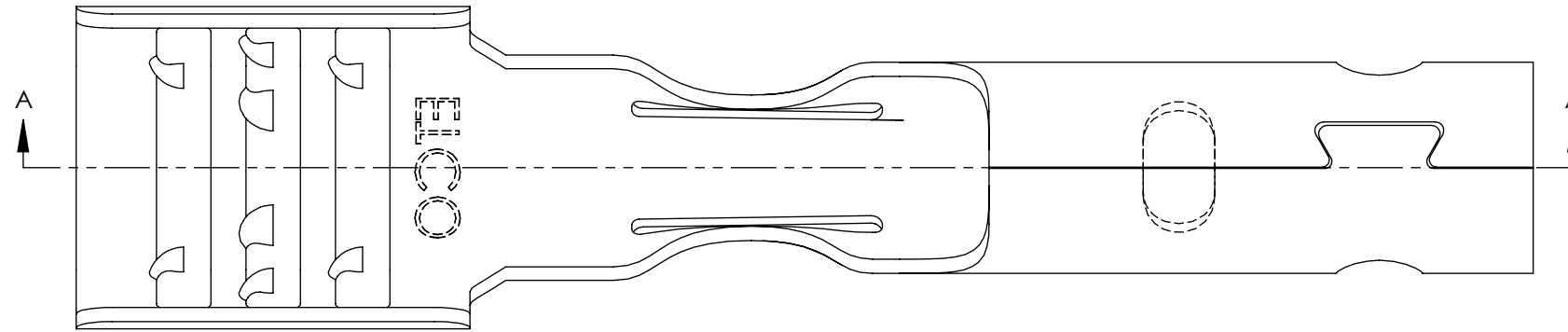


NOTES:

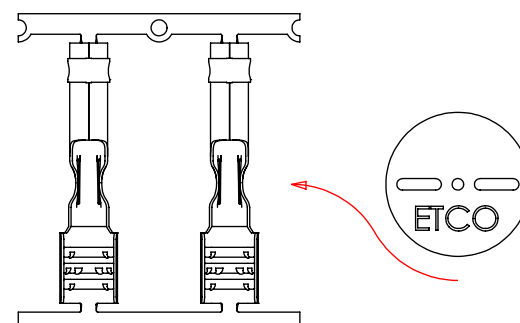
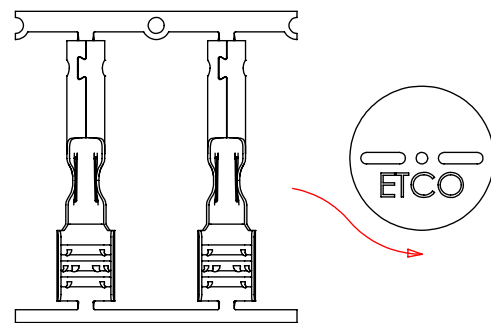
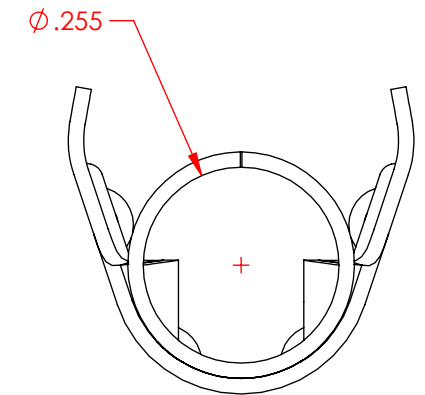
1. MATERIAL: .020 THICK, ELECTRO-GALVANIZED ZINC ^① PLATED STEEL, #3 TEMPER (1/4 HARD) PER ETCO METAL CODE 0-0103.
2. MATERIAL: .020 THICK, S430 STAINLESS STEEL, BRIGHT ANNEALED, PER ETCO METAL CODE 0-0053.
3. PARTS MAY BE COATED WITH A LIGHT FILM OF LUBRICATION USED IN THE MANUFACTURING PROCESS.
4. WIRE RANGE: 8mm.

| P/C | DESCRIPTION | MAT'L | CLIP |
|-------|-----------------|--------|--------|
| 15351 | SP20-SS-EB-S-TR | NOTE 2 | SCA-TR |

| Rev. | Description of Change/SCN# | Date |
|------|---|----------|
| 1 | ECR# 4870 SCJ Redrawn in SW from ACAD Org.Eng.Dwg.Date: 3/13/07 | 11/27/18 |
| 2 | ECR# 6924 SMK | 9/8/22 |



SECTION A-A
SCALE 4 : 1



DIRECTION EXITING TOOL,
EARS UP, TO THE FRONT

DIRECTION TOWARD APPLICATION,
EARS UP TO THE FRONT, FROM RIGHT

UNCONTROLLED COPY

| | | | | |
|---|---------------------------------|--|-----------------------------------|------------------------------|
| <p>THIRD ANGLE PROJECTION TOLERANCES UNLESS OTHERWISE SPECIFIED INCHES: .XX - ±.030 .XXX - ±.015 ANGLES: ±5°</p> | <p>TOOL NO. 2035</p> | <p>Title: Spark Plug Terminal</p> | | |
| | | <p>DO NOT SCALE DWG.</p> | <p>Drawn By: S.Johnson</p> | <p>Date: 11/27/18</p> |
| <p>ETCO Incorporated Engineered Products 25 Bellows Street Warwick, RI 02888 Phone: (401) 467-2400 Fax: (401) 467-9230 www.ETCO.com</p> | | <p>Design Controlled By: ETCO</p> | <p>Scale: 4X</p> | <p>Size B</p> |
| | | <p>Dwg. No.: SP20-EB-S cust</p> | | |