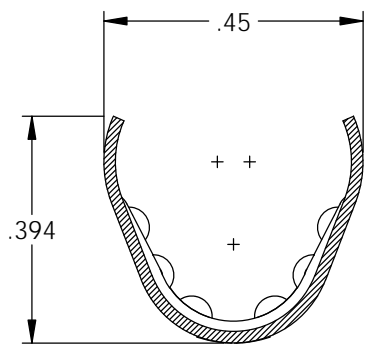
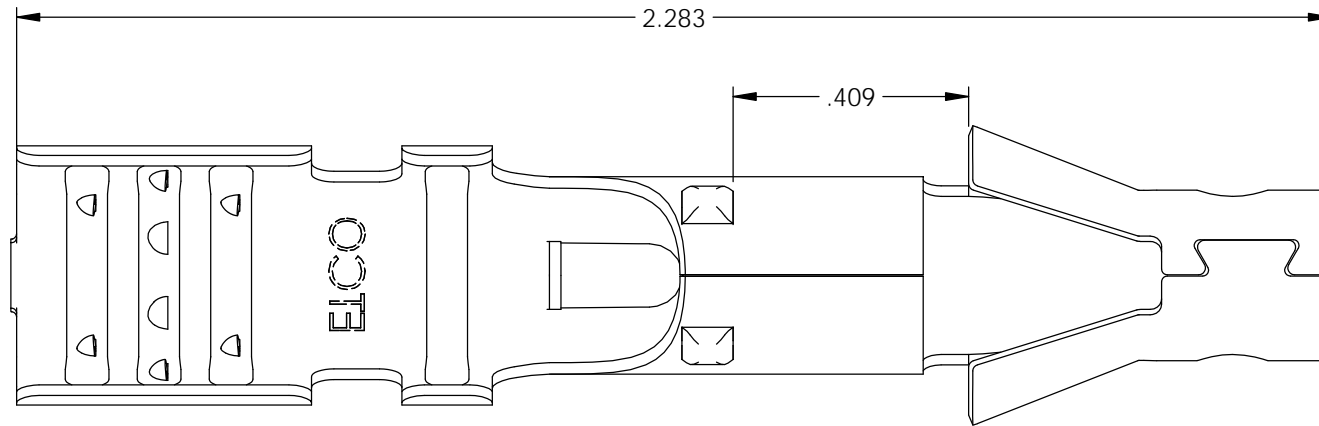
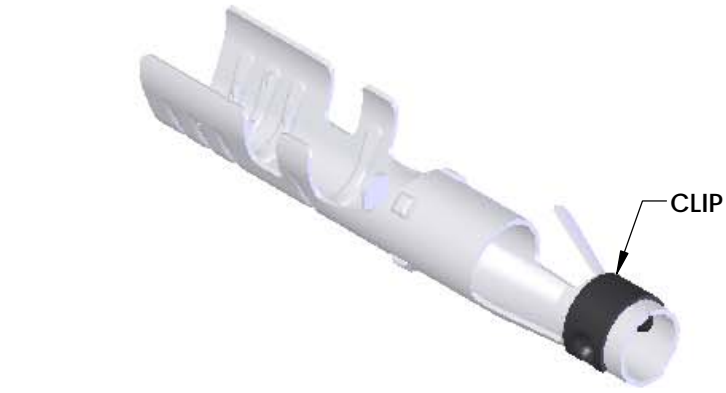


NOTES:

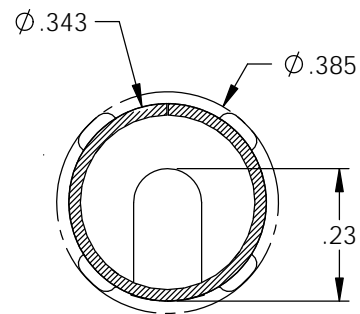
1. MATERIAL: .020 THICK S430 STAINLESS STEEL
ANNEALED TO TEMPER
PER ETCO METAL CODE 0-0098.
2. PARTS MAY BE COATED WITH A LIGHT FILM OF
LUBRICATION USED IN THE MANUFACTURING PROCESS.
3. WIRE RANGE: 8mm.

P/C	DESCRIPTION	MAT'L	CLIP	REWIND
15245	SP2000-SS	NOTE 1	SCA4-B	NO
15282	SP2000-SS-R	NOTE 1	SCA4-B	YES

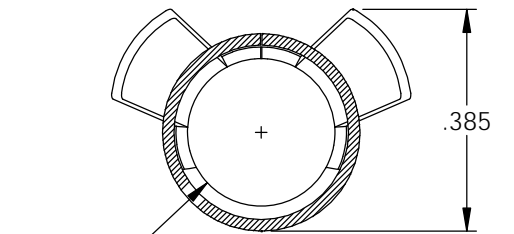
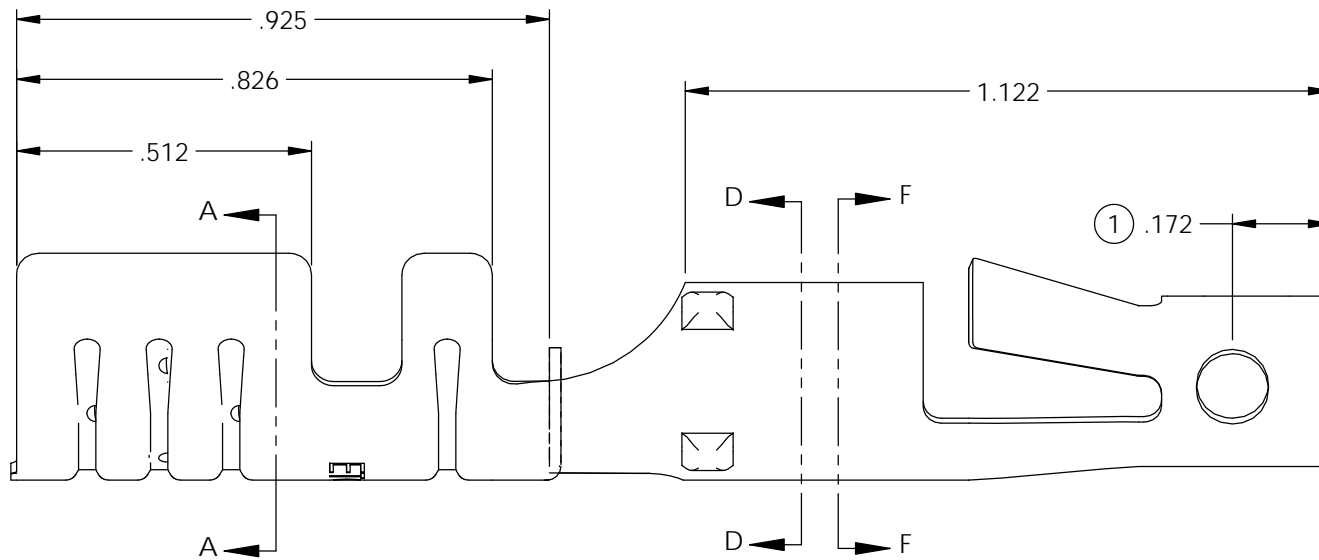
Rev.	Description of Change/ SCN#	Date
1	ECR# 5452 SCJ Redrawn in SW from ACAD Org.Eng.Dwg.Date: 12/07/99	2/11/19



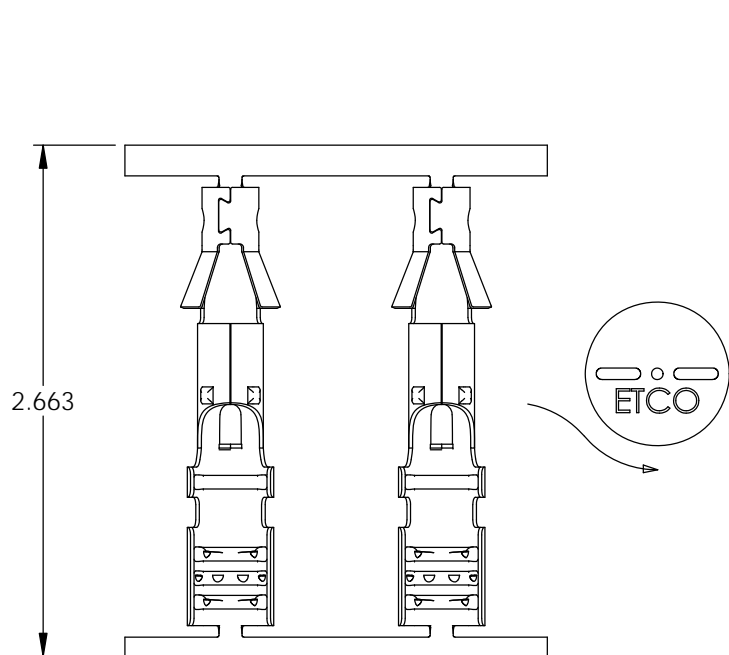
SECTION A-A



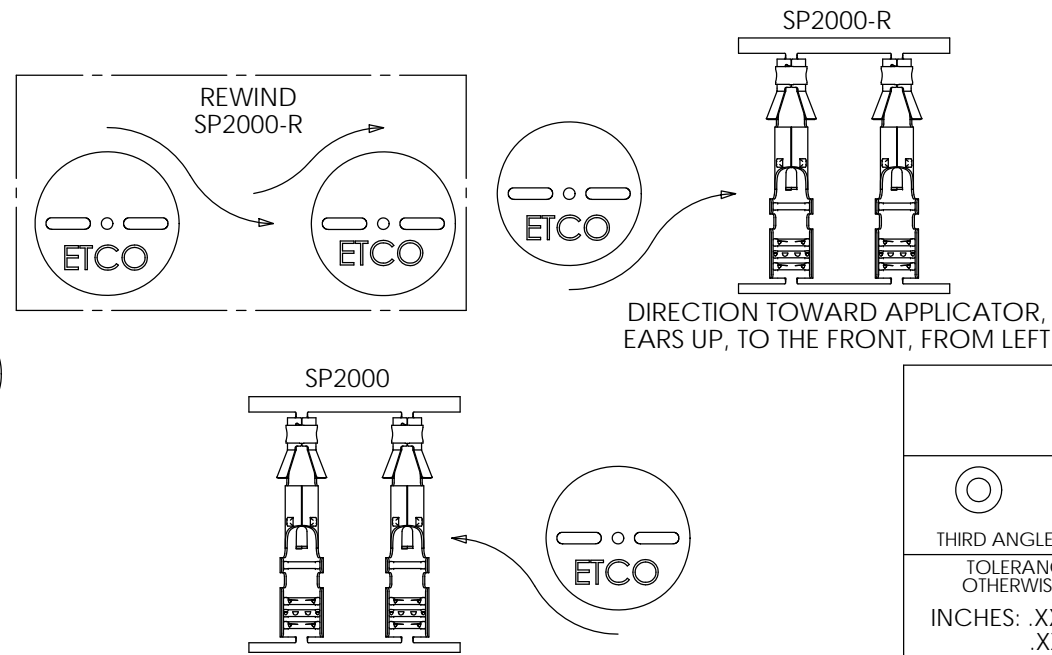
SECTION D-D



SECTION F-F



DIRECTION EXITING TOOL,
EARS UP, TO THE FRONT



DIRECTION TOWARD APPLICATOR,
EARS UP, TO THE FRONT, FROM RIGHT

DIRECTION TOWARD APPLICATOR,
EARS UP, TO THE FRONT, FROM LEFT

THIS PRINT IS THE PROPERTY OF ETCO INCORPORATED. NO PART OF THIS DESIGN MAY BE USED IN ANY WAY WITHOUT WRITTEN CONSENT FROM ETCO INCORPORATED.

UNCONTROLLED COPY

<p>THIRD ANGLE PROJECTION TOLERANCES UNLESS OTHERWISE SPECIFIED INCHES: .XX - ±.030 .XXX - ±.015 ANGLES: ±5°</p>	TOOL NO. 2203	Title: Locking Spark Plug Terminal	
		DO NOT SCALE DWG.	Drawn By: S.Johnson Date: 2/11/19
		Design Control By: ETCO	Scale: 3X Size: B
		Dwg. No.: SP2000 cust	

ETCO Incorporated
Engineered Products
25 Bellows Street
Warwick, RI 02888
Phone: (401) 467-2400
Fax: (401) 467-9230
www.ETCO.com