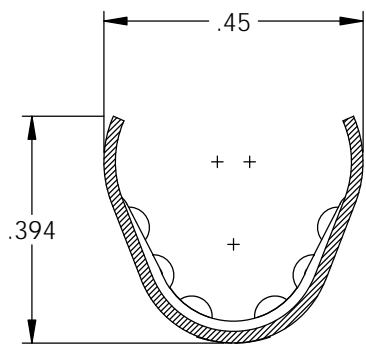
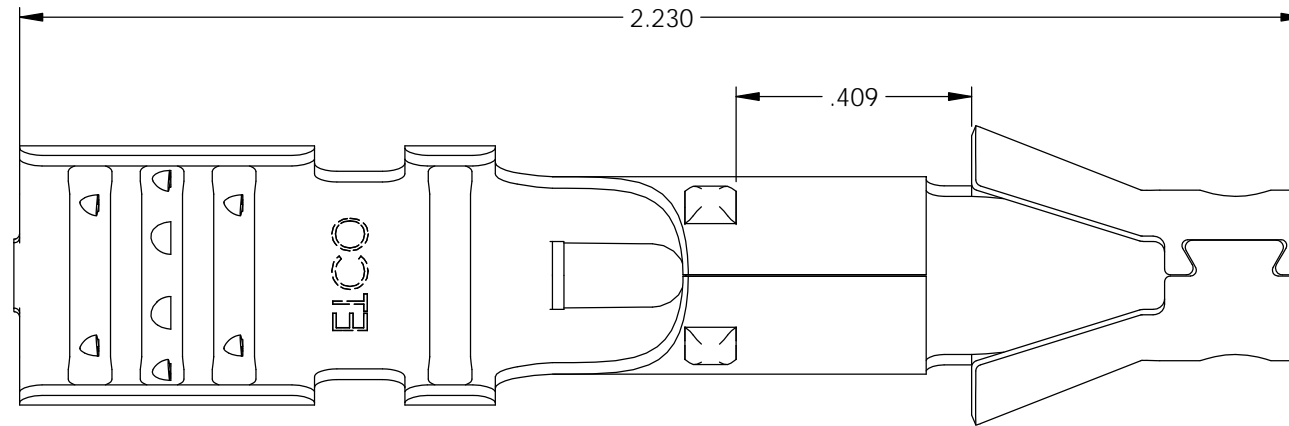


NOTES:

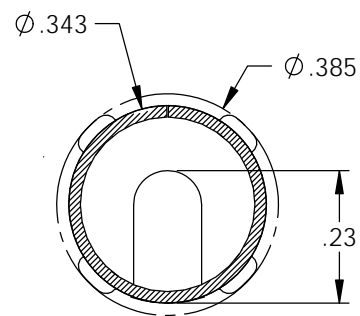
1. MATERIAL: .020 THICK S430 STAINLESS STEEL
ANNEALED TO TEMPER
PER ETCO METAL CODE 0-0098.
2. PARTS MAY BE COATED WITH A LIGHT FILM OF
LUBRICATION USED IN THE MANUFACTURING PROCESS.
3. WIRE RANGE: 8mm.

DESCRIPTION	MAT'L	CLIP	REWIND
SP2001-SS	NOTE 1	SCA4-B	NO
SP2001-SS-R	NOTE 1	SCA4-B	YES

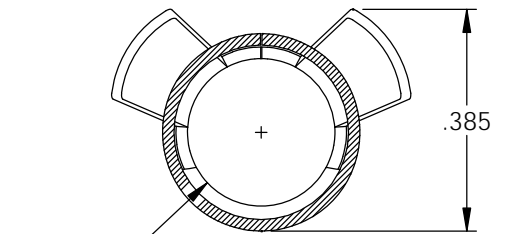
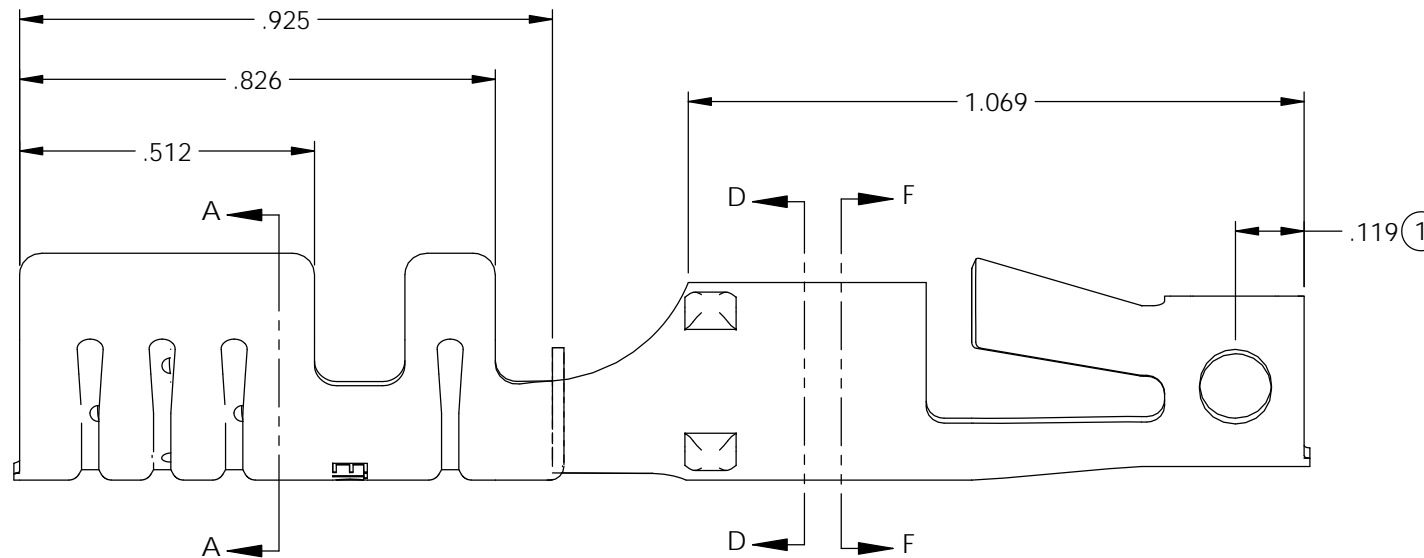
Rev.	Description of Change/ SCN#	Date
1	ECR# 5452 SCJ Redrawn in SW from ACAD Org.Eng.Dwg.Date: 12/07/99	2/11/19



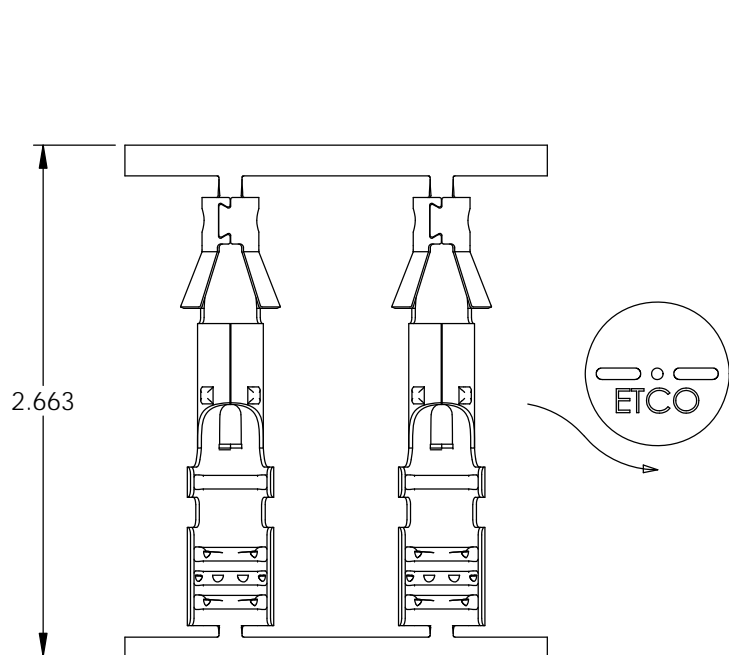
SECTION A-A



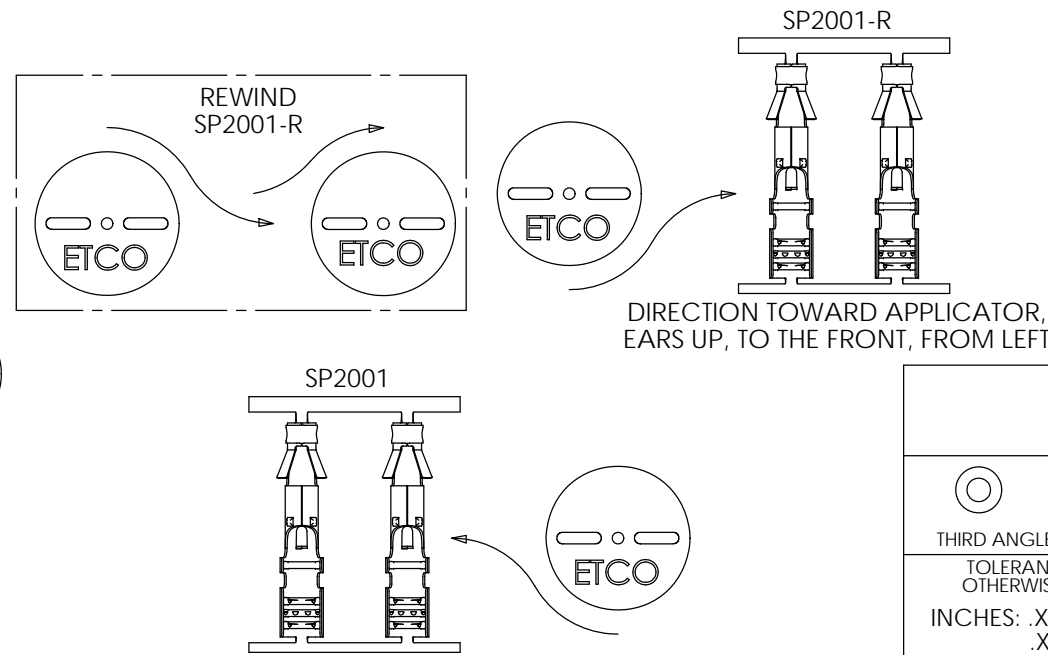
SECTION D-D



SECTION F-F



DIRECTION EXITING TOOL,
EARS UP, TO THE FRONT



DIRECTION TOWARD APPLICATOR,
EARS UP, TO THE FRONT, FROM RIGHT

DIRECTION TOWARD APPLICATOR,
EARS UP, TO THE FRONT, FROM LEFT

THIS PRINT IS THE PROPERTY OF ETCO INCORPORATED. NO PART OF THIS DESIGN MAY BE USED IN ANY WAY WITHOUT WRITTEN CONSENT FROM ETCO INCORPORATED.

UNCONTROLLED COPY

<p>THIRD ANGLE PROJECTION TOLERANCES UNLESS OTHERWISE SPECIFIED INCHES: .XX - ±.030 .XXX - ±.015 ANGLES: ±5°</p>	<p>TOOL NO. 2203</p>	<p>Title: Locking Spark Plug Terminal</p>		
		<p>DO NOT SCALE DWG.</p>	<p>Drawn By: S.Johnson</p>	<p>Date: 2/11/19</p>
		<p>ETCO Incorporated Engineered Products 25 Bellows Street Warwick, RI 02888 Phone: (401) 467-2400 Fax: (401) 467-9230 www.ETCO.com</p>	<p>Design Control By: ETCO</p>	<p>Scale: 3X Size B</p>
		<p>Dwg. No.: SP2001 cust</p>		