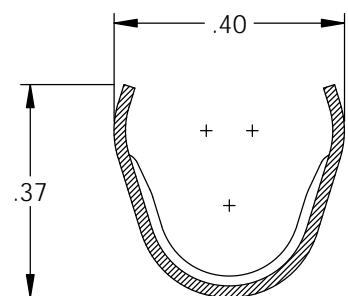
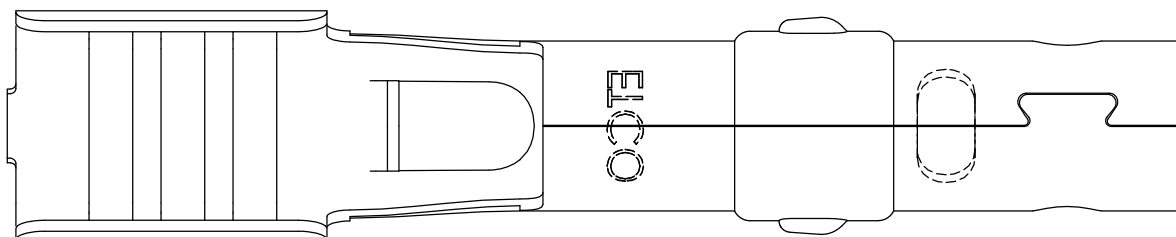
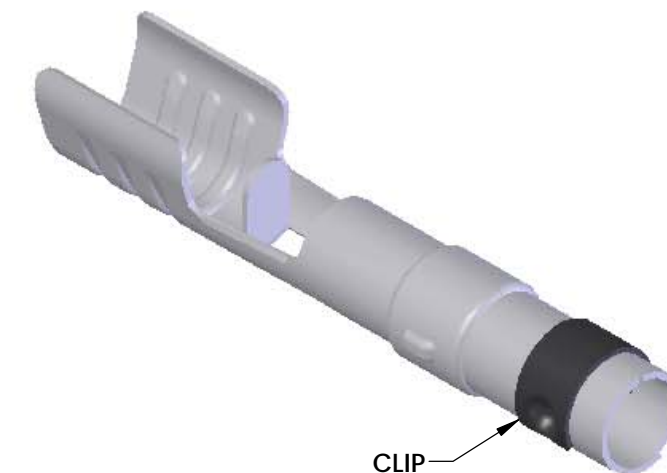


NOTES:

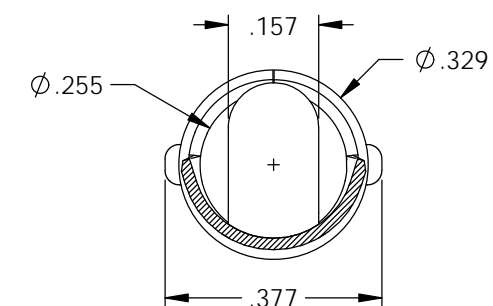
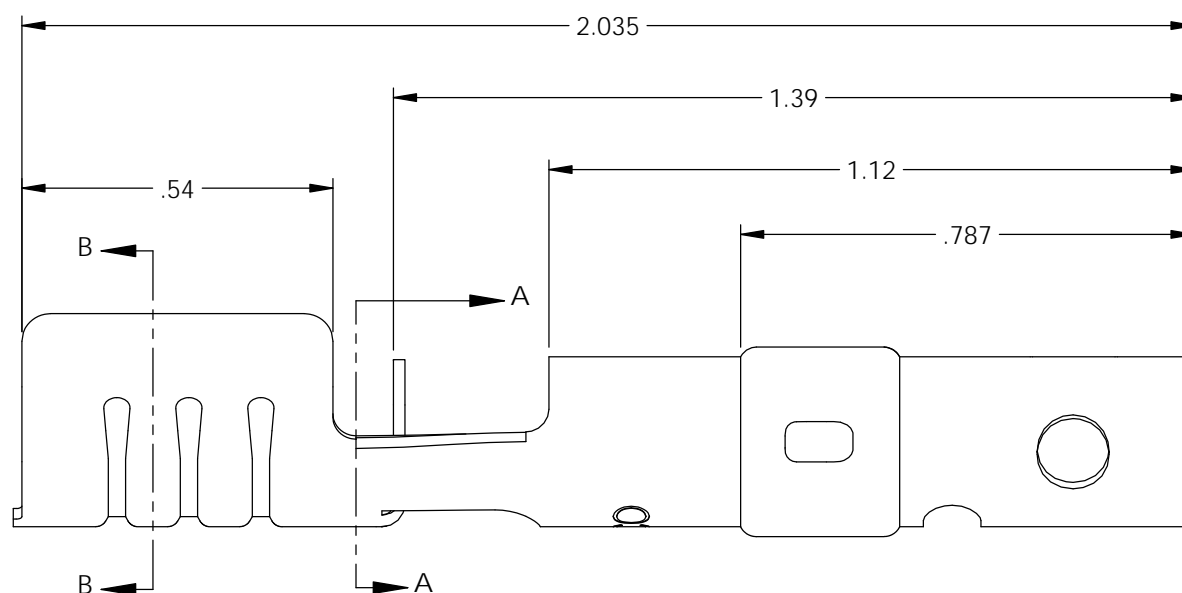
1. MATERIAL: .020 THICK, ELECTRO-GALVANIZED ZINC <sup>(4)</sup> PLATED STEEL, #3 TEMPER (1/4 HARD) PER ETCO METAL CODE 0-0103.
2. MATERIAL: .020 THICK, S430 STAINLESS STEEL, BRIGHT ANNEALED, PER ETCO METAL CODE 0-0053.
3. PARTS MAY BE COATED WITH A LIGHT FILM OF LUBRICATION USED IN THE MANUFACTURING PROCESS.
4. WIRE RANGE: 7mm.
5. PARTS ARE PRODUCED IN LOOSE PIECE FORM.

P/C	DESCRIPTION	MAT'L	CLIP
22028	SP24-BZS-T-X	NOTE 1	SCA4-B
15396	SP24-BZS-T-G-X	NOTE 1	SCA4-G

Rev.	Description of Change/ SCN#	Date
4	ECR# 4870 SCJ Redrawn in SW from ACAD Org.Eng.Dwg.Date: 2/14/92	1/25/19



SECTION B-B



SECTION A-A

# UNCONTROLLED COPY

<p>THIRD ANGLE PROJECTION TOLERANCES UNLESS OTHERWISE SPECIFIED INCHES: .XX - ±.030 .XXX - ±.015 ANGLES: ±5°</p>	<p>TOOL NO. <b>2087</b></p>	<p>Title: <b>Spark Plug Terminal</b></p>		
		<p>DO NOT SCALE DWG.</p>	<p>Drawn By: <b>S.Johnson</b></p>	<p>Date: <b>1/25/19</b></p>
<p>ETCO Incorporated Engineered Products 25 Bellows Street Warwick, RI 02888 Phone: (401) 467-2400 Fax: (401) 467-9230 www.ETCO.com</p>		<p>Design Control By: <b>ETCO</b></p>	<p>Scale: <b>3X</b></p>	<p>Size <b>B</b></p>
		<p>Dwg. No.: <b>SP24-T-X cust</b></p>		