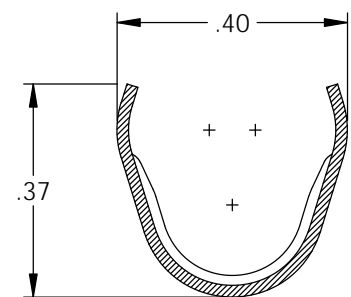
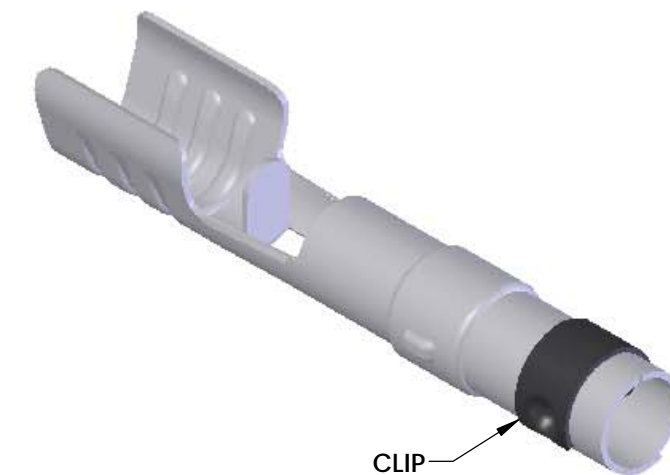


NOTES:

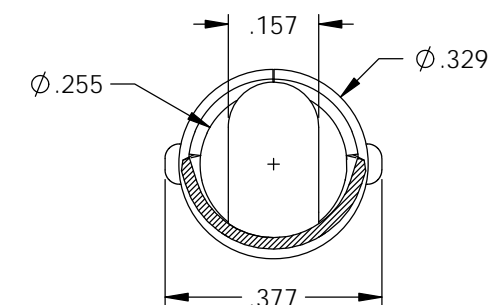
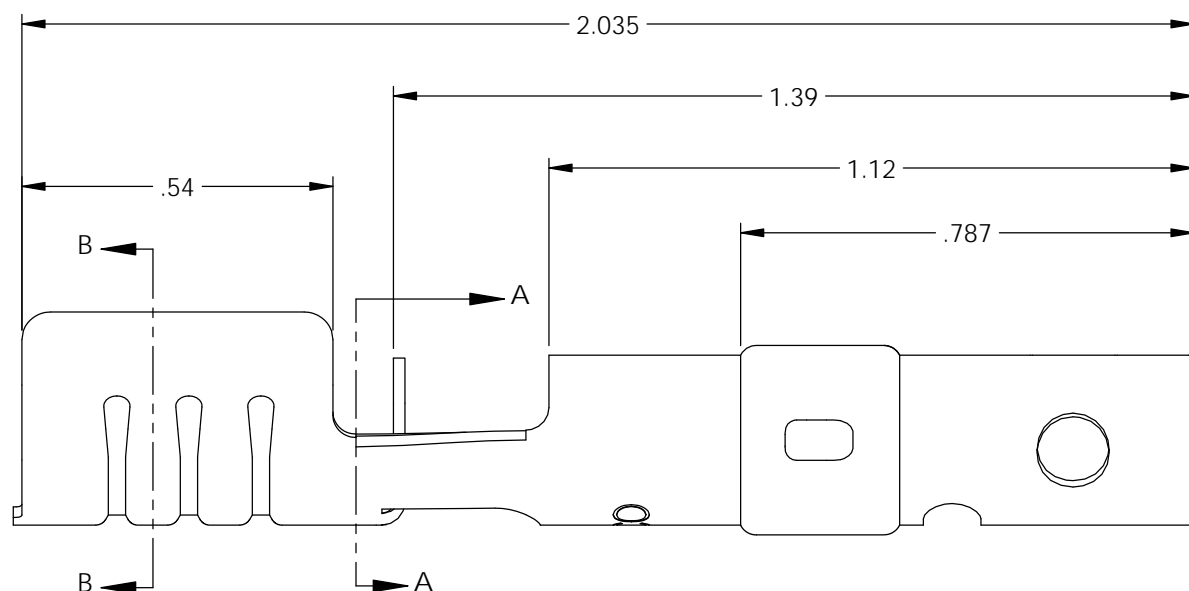
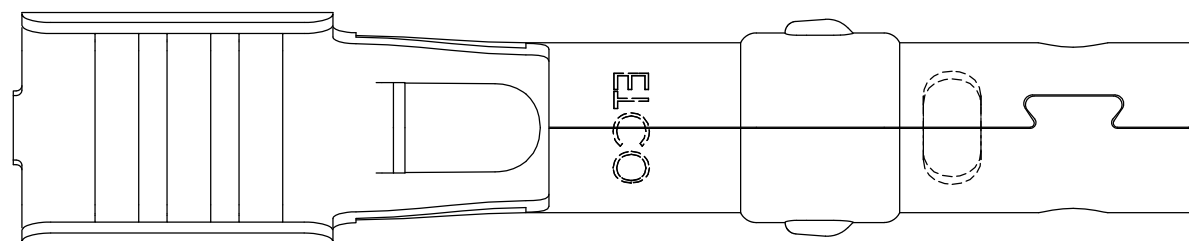
1. MATERIAL: .020 THICK, ELECTRO-GALVANIZED ZINC ⁽⁴⁾ PLATED STEEL, #3 TEMPER (1/4 HARD) PER ETCO METAL CODE 0-0103.
2. MATERIAL: .020 THICK, S430 STAINLESS STEEL, BRIGHT ANNEALED, PER ETCO METAL CODE 0-0053.
3. PARTS MAY BE COATED WITH A LIGHT FILM OF LUBRICATION USED IN THE MANUFACTURING PROCESS.
4. WIRE RANGE: 7mm.

P/C	DESCRIPTION	MAT'L	CLIP	REWIND
15104	SP24-BZS-T	NOTE 1	SCA4-B	NO
15108	SP24-BZS-T-R	NOTE 1	SCA4-B	YES
15118	SP24-SS-T	NOTE 2	SCA4-B	NO
15194	SP24-SS-T-R	NOTE 2	SCA4-B	YES
15263	SP24-BZS-T-G	NOTE 1	SCA4-G	NO
22027	SP24-BZS-T-G-R	NOTE 1	SCA4-G	YES

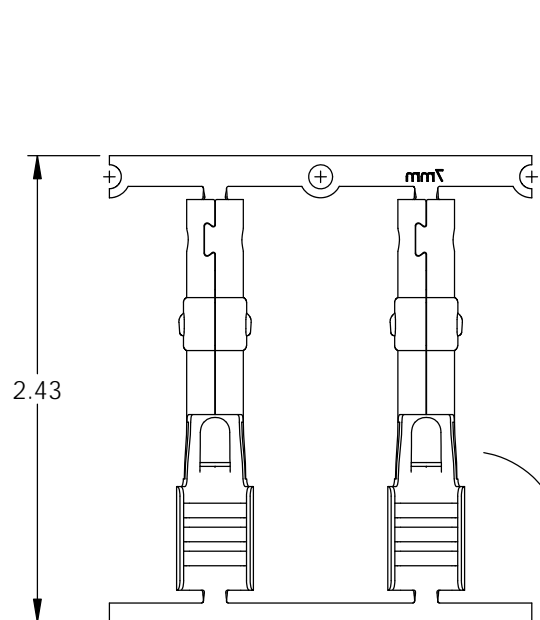
Rev.	Description of Change/ SCN#	Date
4	ECR# 4870 SCJ Redrawn in SW from ACAD Org.Eng.Dwg.Date: 2/14/92	1/24/19
5	ECR# 5927 SCJ	3/06/20



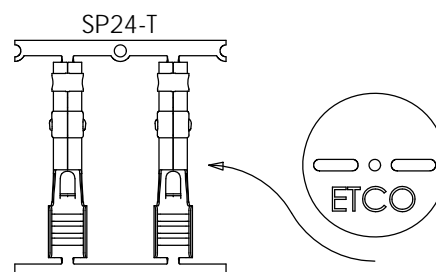
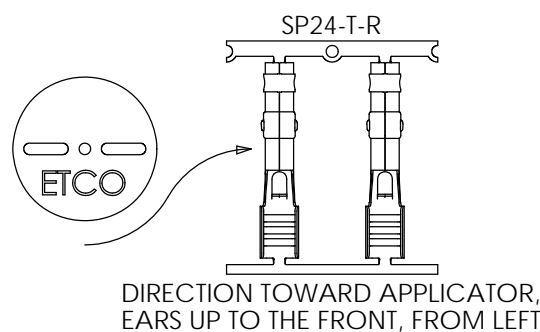
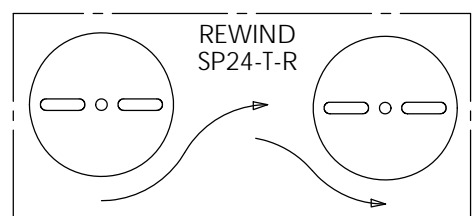
SECTION B-B



SECTION A-A



DIRECTION EXITING TOOL, EARS UP TO THE FRONT



DIRECTION TOWARD APPLICATOR, EARS UP TO THE FRONT, FROM RIGHT

THIS PRINT IS THE PROPERTY OF ETCO INCORPORATED. NO PART OF THIS DESIGN MAY BE USED IN ANY WAY WITHOUT WRITTEN CONSENT FROM ETCO INCORPORATED.

UNCONTROLLED COPY

<p>THIRD ANGLE PROJECTION TOLERANCES UNLESS OTHERWISE SPECIFIED INCHES: .XX - ±.030 .XXX - ±.015 ANGLES: ±5°</p>	TOOL NO. 2087	Title: Spark Plug Terminal	
		DO NOT SCALE DWG.	Drawn By: S.Johnson Date: 1/24/19
ETCO Incorporated Engineered Products 25 Bellows Street Warwick, RI 02888 Phone: (401) 467-2400 Fax: (401) 467-9230 www.ETCO.com		Design Control By: ETCO	Scale: 3X
		Dwg. No.: SP24-T cust	