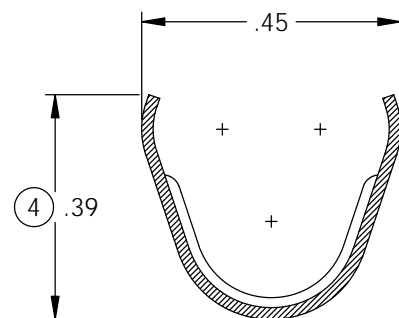
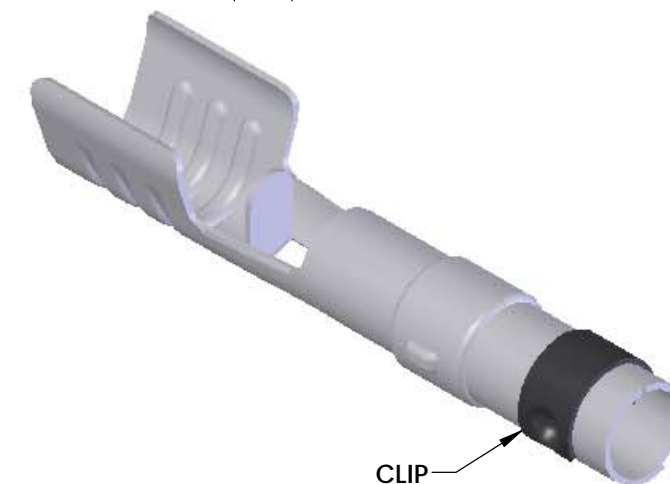
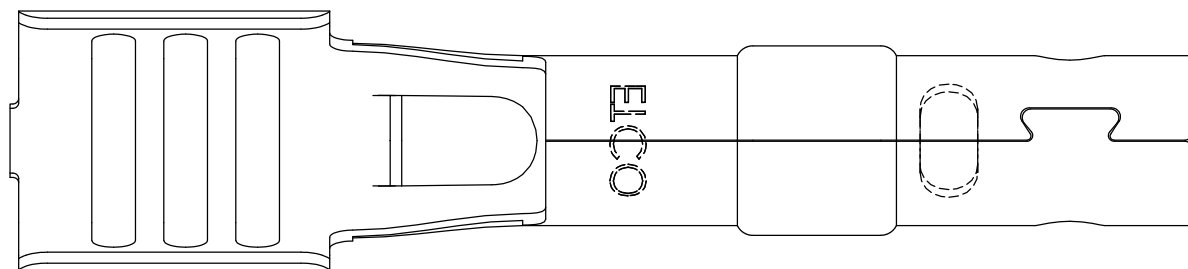


NOTES:

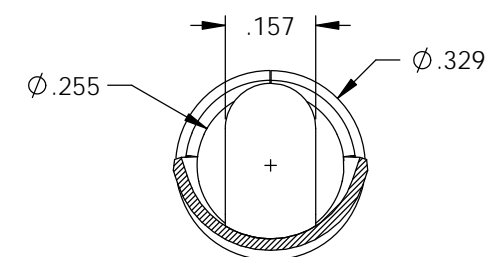
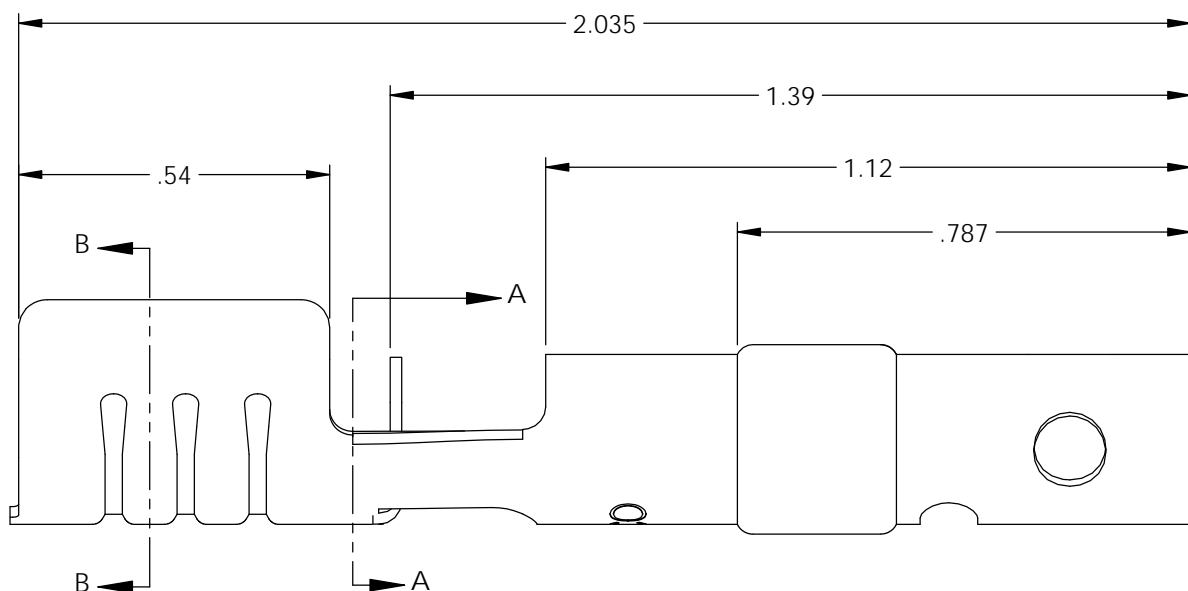
1. MATERIAL: .020 THICK, ELECTRO-GALVANIZED ZINC ^③ PLATED STEEL, #3 TEMPER (1/4 HARD) PER ETCO METAL CODE 0-0103.
2. MATERIAL: .020 THICK, S430 STAINLESS STEEL, BRIGHT ANNEALED, PER ETCO METAL CODE 0-0053.
3. PARTS MAY BE COATED WITH A LIGHT FILM OF LUBRICATION USED IN THE MANUFACTURING PROCESS.
4. WIRE RANGE: 8mm.
5. PARTS ARE PRODUCED IN LOOSE PIECE FORM.

P/C	DESCRIPTION	MAT'L	CLIP
22030	SP25-SS-X	NOTE 2	SCA4-B

Rev.	Description of Change/ SCN#	Date
3	ECR# 4870 SCJ Redrawn in SW from ACAD Org.Eng.Dwg.Date: 11/20/92	1/25/19
4	ECR# 6146 SMK	10/21/20



SECTION B-B



SECTION A-A

UNCONTROLLED COPY

<p>THIRD ANGLE PROJECTION TOLERANCES UNLESS OTHERWISE SPECIFIED INCHES: .XX - ±.030 .XXX - ±.015 ANGLES: ±5°</p>	<p>TOOL NO. 2087</p>	<p>Title: Spark Plug Terminal</p>		
		<p>DO NOT SCALE DWG.</p>	<p>Drawn By: S.Johnson</p>	<p>Date: 1/25/19</p>
<p>ETCO Incorporated Engineered Products 25 Bellows Street Warwick, RI 02888 Phone: (401) 467-2400 Fax: (401) 467-9230 www.ETCO.com</p>		<p>Design Control By: ETCO</p>	<p>Scale: 3X</p>	<p>Size B</p>
		<p>Dwg. No.: SP25-X cust</p>		