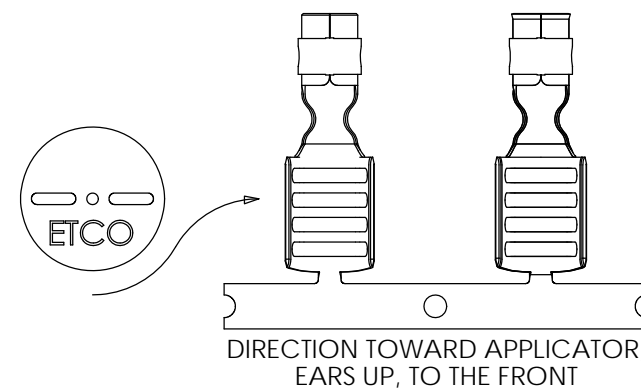
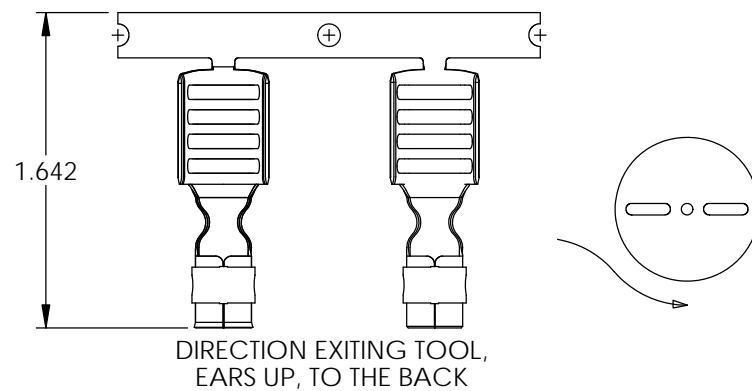
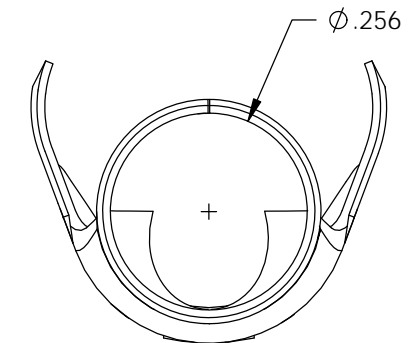
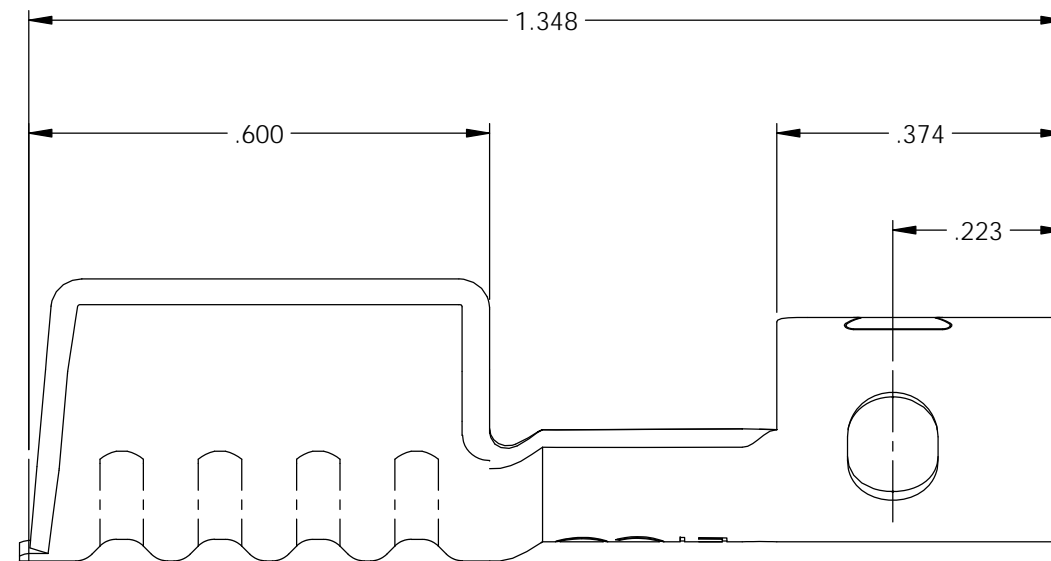
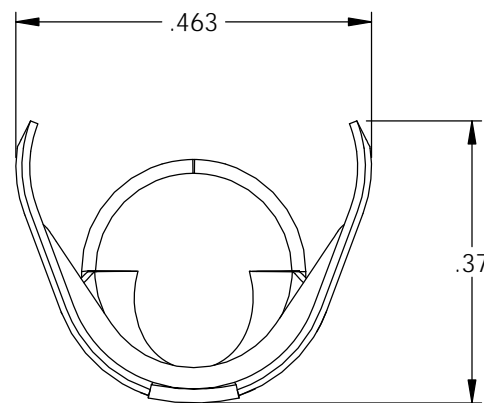
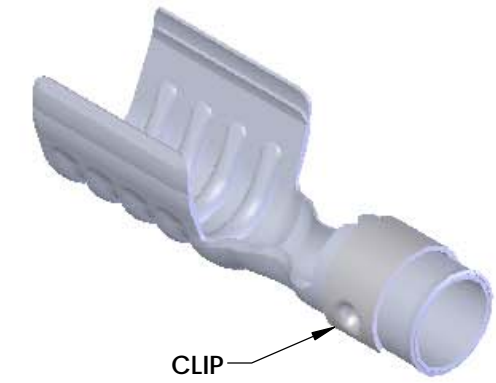
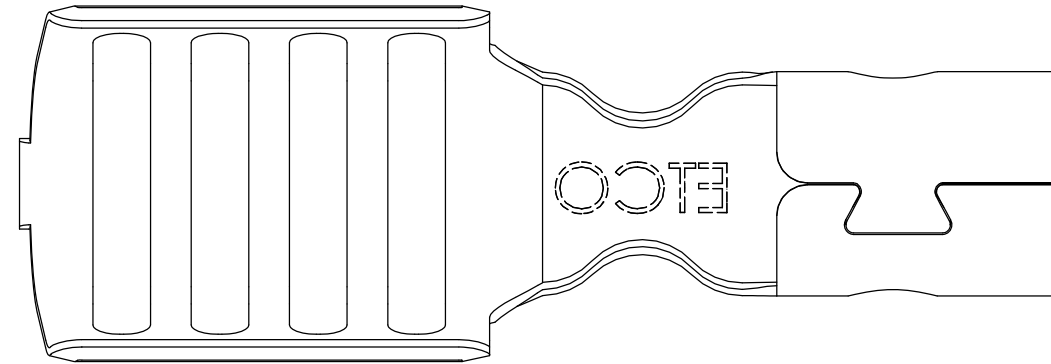


NOTES:

1. MATERIAL: .018 THICK 430 STAINLESS STEEL, BRIGHT ANNEALED, PER ETCO METAL CODE 0-0044.
2. PARTS MAY BE COATED WITH A LIGHT FILM OF LUBRICATION USED IN THE MANUFACTURING PROCESS.
3. WIRE RANGE: 7mm.
4. FOR MAXIMUM PERFORMANCE AND RELIABILITY, ALWAYS USE ETCO ENGINEERED IGNITION TERMINALS WITH ETCO AUTOMOTIVE INSULATOR BOOTS.

P/C	DESCRIPTION	MAT'L	CLIP
22022	SP260-SS-PB	NOTE 1	SCA570

Rev.	Description of Change/ SCN#	Date
1	Redraw in SolidWorks SCJ Org.Eng.Dwg.Date: 1/06/10	1/07/19



UNCONTROLLED COPY

THIRD ANGLE PROJECTION
 TOLERANCES UNLESS OTHERWISE SPECIFIED
 INCHES: .XX - ±.030
 .XXX - ±.015
 ANGLES: ±5°

TOOL NO.
2129



Title: **Spark Plug Terminal**

DO NOT SCALE DWG.

ETCO Incorporated
 25 Bellows Street
 Warwick, RI 02888
 Phone: (401) 467-2400
 Fax: (401) 467-9230
 www.ETCO.com

Drawn By: **S.Johnson** Date: **1/08/19**

Design Controlled By: **ETCO** Scale: **4X** Size: **B**

Dwg. No.: **SP260-PB cust**