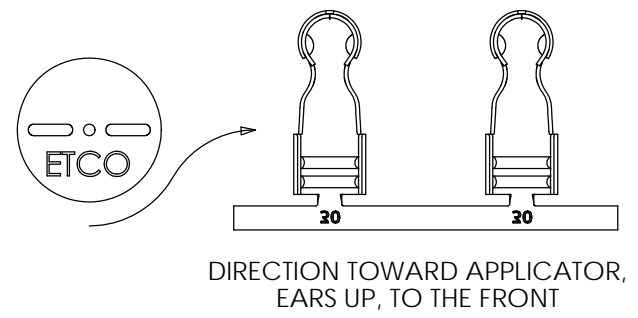
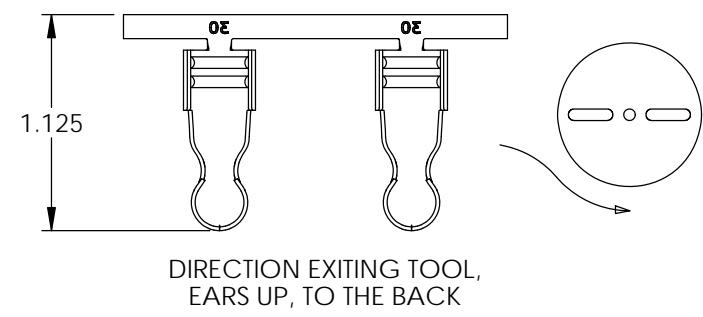
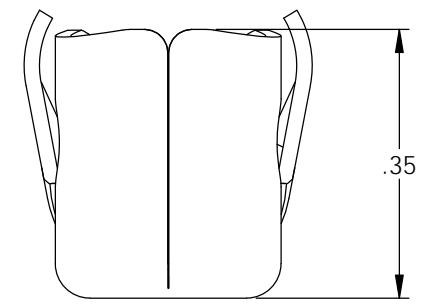
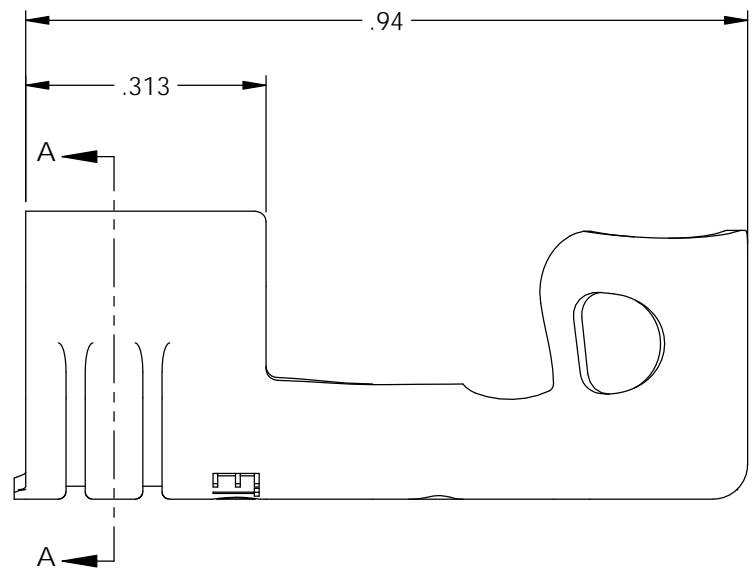
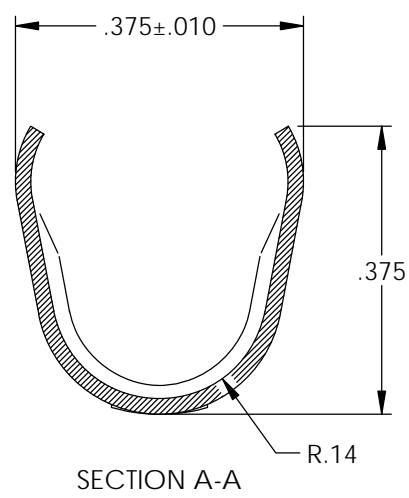
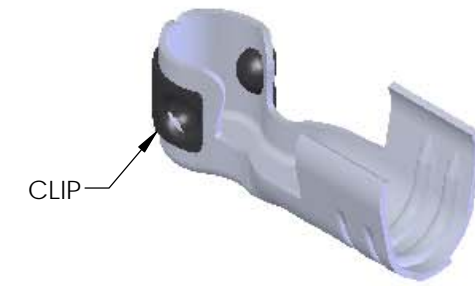
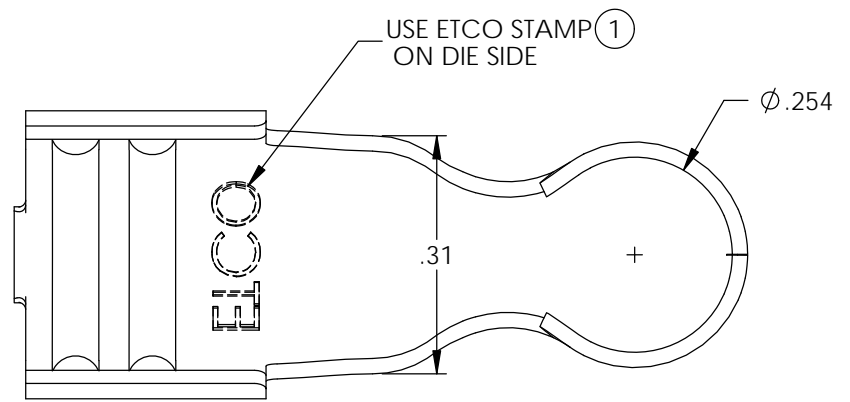


- NOTES:
1. MATERIAL: .020 THICK, ELECTRO-GALVANIZED ZINC $\text{\textcircled{C}}$ PLATED STEEL, #3 TEMPER (1/4 HARD) PER ETCO METAL CODE 0-0034.
 2. MATERIAL: .020 THICK, S430 STAINLESS STEEL, BRIGHT ANNEALED, PER ETCO METAL CODE 0-0051.
 3. PARTS MAY BE COATED WITH A LIGHT FILM OF LUBRICATION USED IN THE MANUFACTURING PROCESS.
 4. WIRE RANGE: 7mm.

P/C	DESCRIPTION	MAT'L	CLIP
15045	SP30-BZS	NOTE 1	SCA4-B
09766	SP30-SS	NOTE 2	SCA4-B
09760	SP30-SS-DK	NOTE 2	SCA570

Rev.	Description of Change/ SCN#	Date
C	Redrawn in SolidWorks Orig. Eng. Dwg. Date: 10/30/89 ECR# 4870 SCJ	4/30/18
1	ECR #5279 SMK	9/18/18



UNCONTROLLED COPY

<p>THIRD ANGLE PROJECTION TOLERANCES UNLESS OTHERWISE SPECIFIED INCHES: .XX - ±.030 .XXX - ±.015 ANGLES: ±5°</p>	<p>TOOL NO. 2004 2127</p>	<p>Title: 90° IGNITION TERMINAL</p>		
		<p>DO NOT SCALE DWG.</p>	<p>Drawn By: S.JOHNSON</p>	<p>Date: 4/30/18</p>
		<p>Chk'd/App'd By:</p>	<p>Scale: 4X</p>	<p>Size B</p>
		<p>Dwg. No.: SP30</p>		
		<p>ETCO Incorporated Engineered Products 25 Bellows Street Warwick, RI 02888 Phone: (401) 467-2400 Fax: (401) 467-9230 www.ETCO.com</p>		