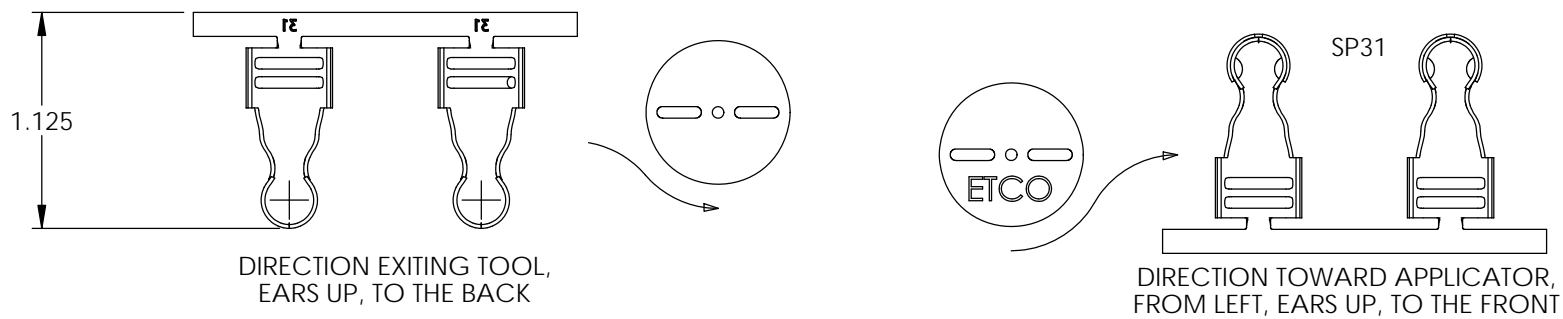
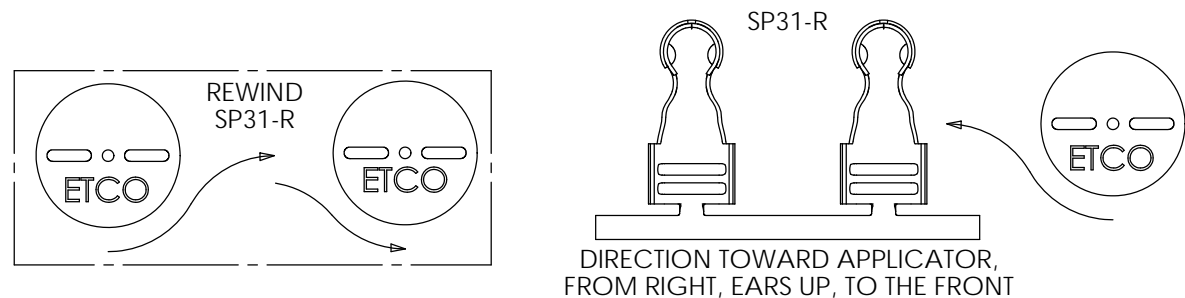
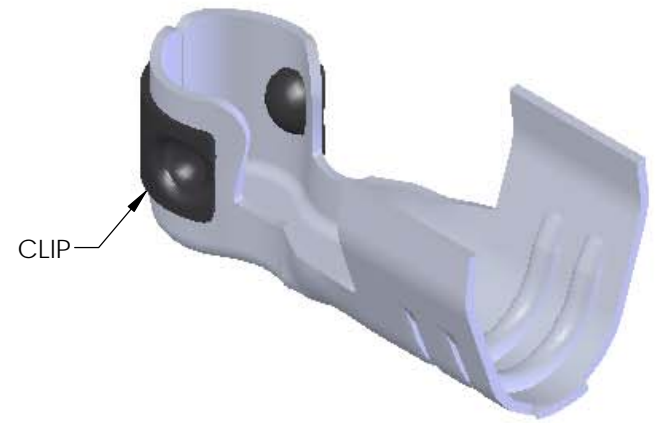
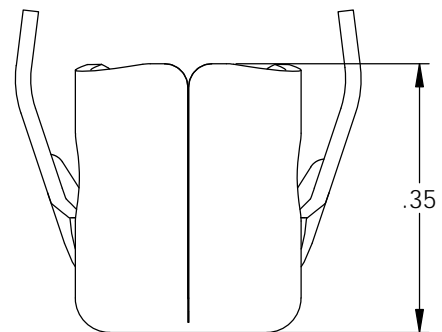
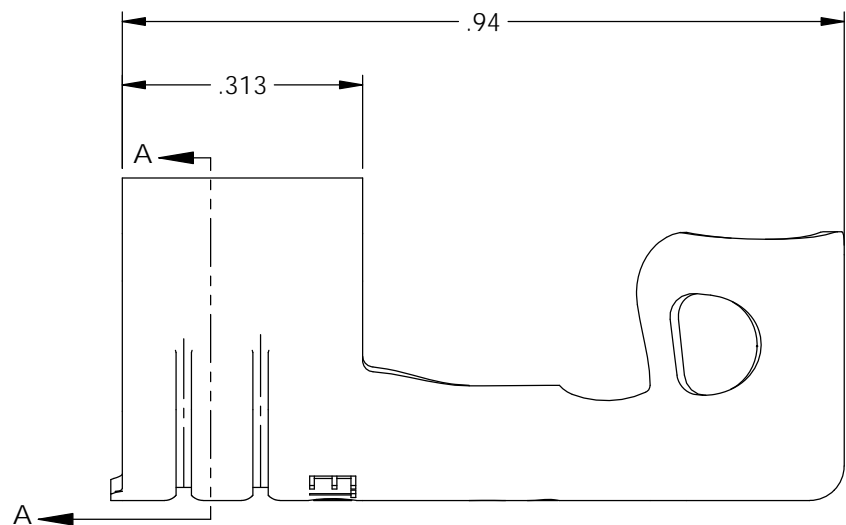
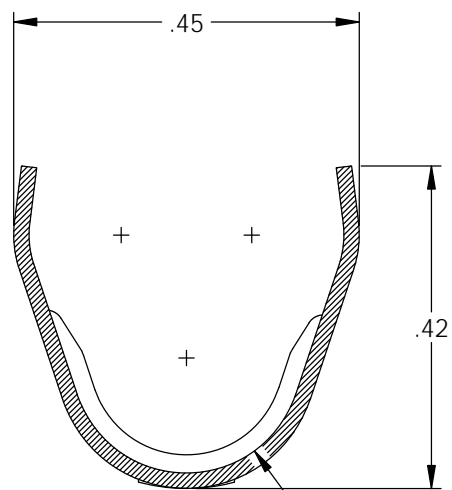
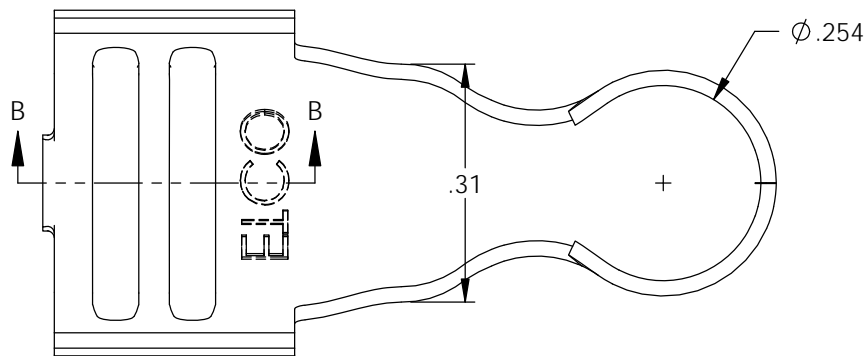


- NOTES:
1. MATERIAL: .020 THICK, ELECTRO-GALVANIZED ZINC <sup>①</sup> PLATED STEEL, #3 TEMPER (1/4 HARD) PER ETCO METAL CODE 0-0034.
  2. MATERIAL: .020 THICK, S430 STAINLESS STEEL, BRIGHT ANNEALED, PER ETCO METAL CODE 0-0051.
  3. PARTS MAY BE COATED WITH A LIGHT FILM OF LUBRICATION USED IN THE MANUFACTURING PROCESS.
  4. WIRE RANGE: 8mm.

P/C	DESCRIPTION	MAT'L	CLIP	REWIND
22036	SP31-SS-R	NOTE 2	SCA4-B	YES
09797	SP31-SS	NOTE 2	SCA4-B	NO
15046	SP31-BZS	NOTE 1	SCA4-B	NO
15180	SP31-BZS-R	NOTE 1	SCA4-B	YES
15182	SP31-SS-SC	NOTE 2	SCA570	NO

Rev.	Description of Change/ SCN#	Date
1	Redrawn in SolidWorks Orig. Eng. Dwg. Date: 10/30/89 ECR# 4870 SCJ	3/18/19



# UNCONTROLLED COPY

<p>THIRD ANGLE PROJECTION TOLERANCES UNLESS OTHERWISE SPECIFIED INCHES: .XX - ±.030 .XXX - ±.015 ANGLES: ±5°</p>	<p>TOOL NO. 2055, 2057, 2043, 2005</p>	<p>Title: 90° IGNITION TERMINAL</p>		
		<p>DO NOT SCALE DWG.</p>	<p>Drawn By: S.JOHNSON</p>	<p>Date: 3/18/19</p>
<p>ETCO Incorporated Engineered Products 25 Bellows Street Warwick, RI 02888 Phone: (401) 467-2400 Fax: (401) 467-9230 www.ETCO.com</p>		<p>Design Control By: ETCO</p>	<p>Scale: 4X</p>	<p>Size B</p>
		<p>Dwg. No.: SP31 cust</p>		