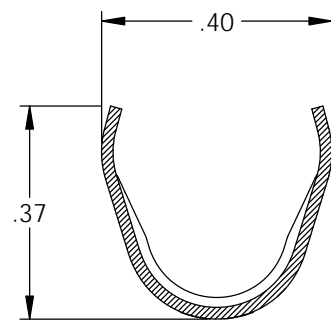
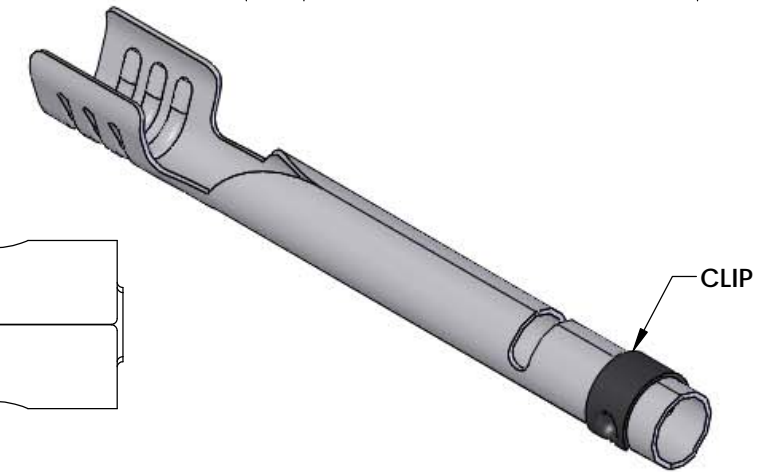
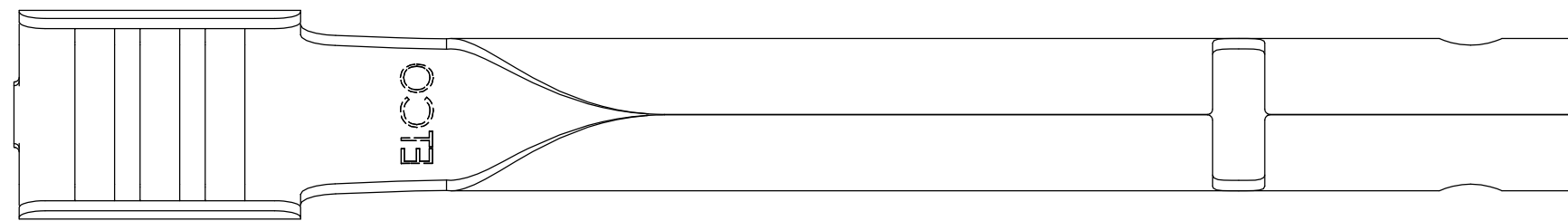


NOTES:

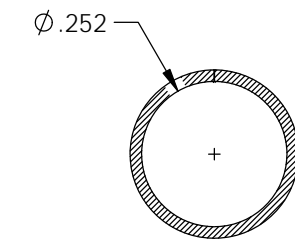
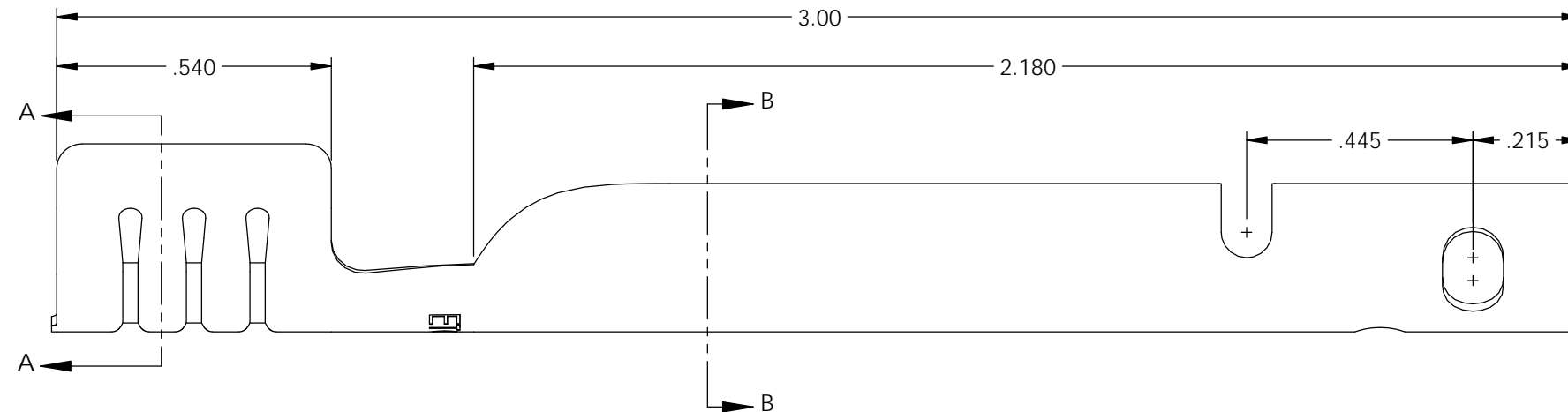
- MATERIAL: .020 THICK, ELECTRO-GALVANIZED ZINC <sup>(1)</sup> PLATED STEEL, #3 TEMPER (1/4 HARD) PER ETCO METAL CODE 0-0035.
- MATERIAL: .020 THICK S430 STAINLESS STEEL BRIGHT ANNEALED PER ETCO METAL CODE 0-0041.
- PARTS MAY BE COATED WITH A LIGHT FILM OF LUBRICATION USED IN THE MANUFACTURING PROCESS.
- WIRE RANGE: 7mm.

P/C	DESCRIPTION	MAT'L	CLIP
15284	SP45-BZS	NOTE 1	SCA-B
15285	SP45-SS	NOTE 2	SCA-B

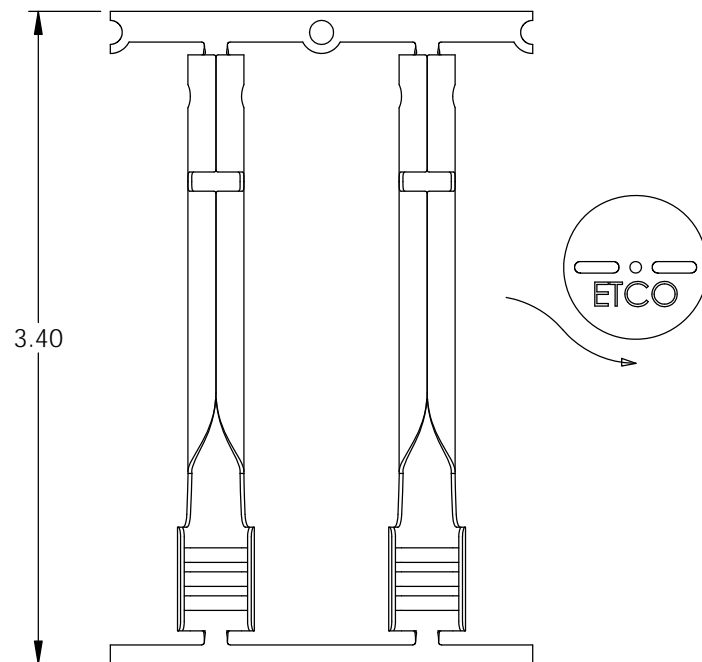
Rev.	Description of Change/ SCN#	Date
1	ECR# 4870 SCJ Redrawn in SW from ACAD Org.Eng.Dwg.Date: 3/19/04	6/14/19



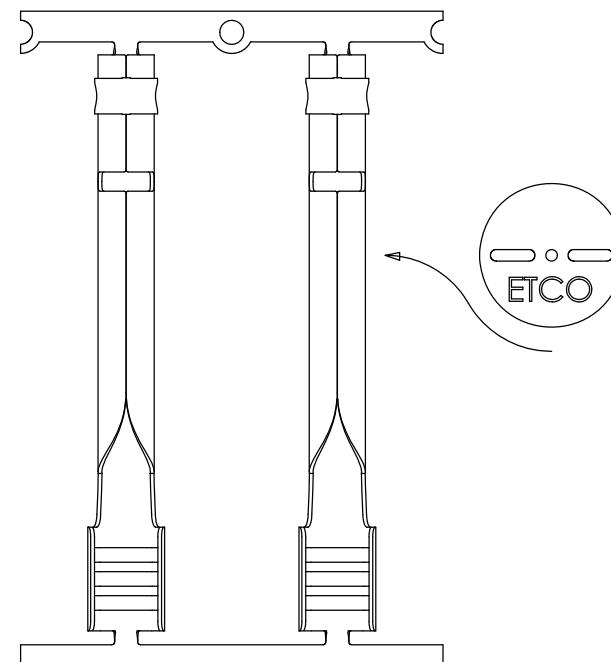
SECTION A-A



SECTION B-B



DIRECTION EXITING TOOL, EARS UP, TO THE FRONT



DIRECTION TOWARD APPLICATOR, EARS UP, TO THE FRONT, FROM RIGHT

THIS PRINT IS THE PROPERTY OF ETCO INCORPORATED. NO PART OF THIS DESIGN MAY BE USED IN ANY WAY WITHOUT WRITTEN CONSENT FROM ETCO INCORPORATED.

# UNCONTROLLED COPY

<p>THIRD ANGLE PROJECTION TOLERANCES UNLESS OTHERWISE SPECIFIED INCHES: .XX - ±.030 .XXX - ±.015 ANGLES: ±5°</p>	<p>TOOL NO.</p> <p><b>2241</b></p>	<p>Title:</p> <p><b>Spark Plug Terminal</b></p>	
		<p>DO NOT SCALE DWG.</p> <p>Design Control By: <b>ETCO</b></p> <p>Dwg. No.: <b>SP45 cust</b></p>	<p>Drawn By: <b>S.Johnson</b></p> <p>Scale: <b>3X</b></p> <p>Date: <b>6/14/19</b></p> <p>Size: <b>B</b></p>

ETCO Incorporated  
Engineered Products  
25 Bellows Street  
Warwick, RI 02888  
Phone: (401) 467-2400  
Fax: (401) 467-9230  
www.ETCO.com