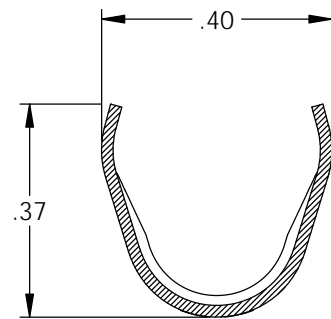
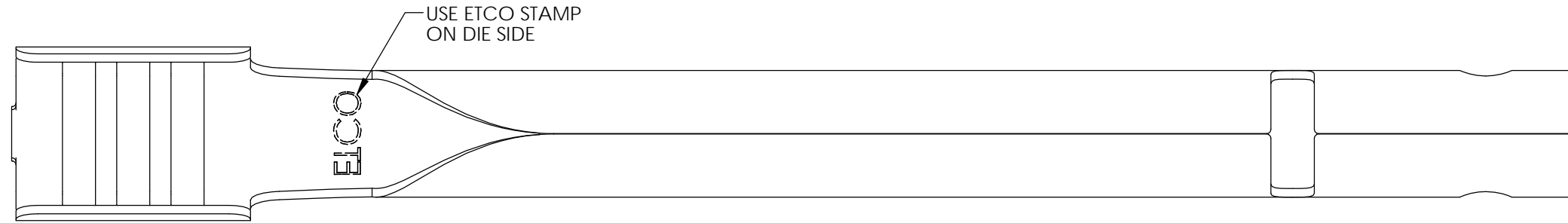


NOTES:

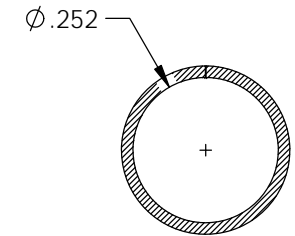
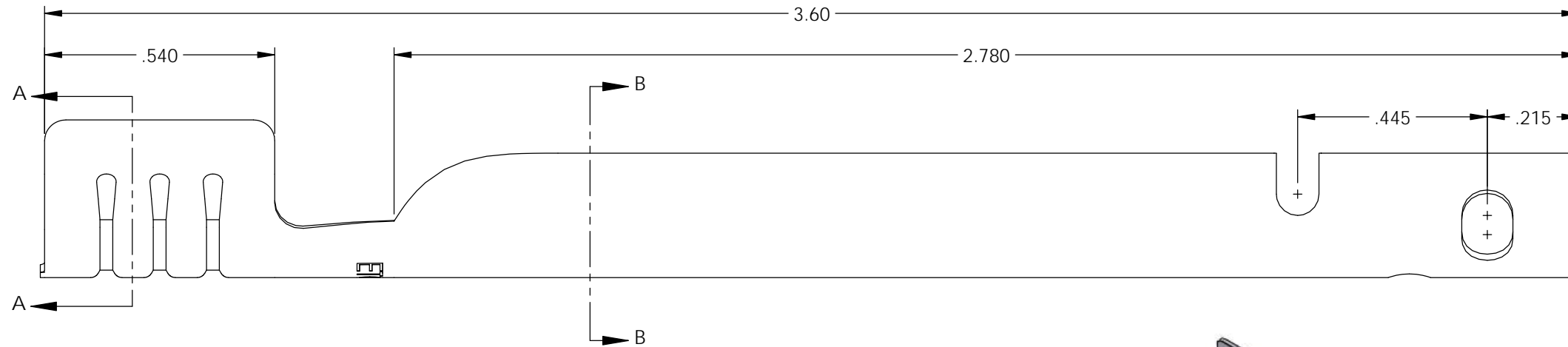
- MATERIAL: .020 THICK, ELECTRO-GALVANIZED ZINC ⁽¹⁾ PLATED STEEL, #3 TEMPER (1/4 HARD) PER ETCO METAL CODE 0-0035.
- MATERIAL: .020 THICK S430 STAINLESS STEEL BRIGHT ANNEALED PER ETCO METAL CODE 0-0041.
- PARTS MAY BE COATED WITH A LIGHT FILM OF LUBRICATION USED IN THE MANUFACTURING PROCESS.
- WIRE RANGE: 7mm.

P/C	DESCRIPTION	MAT'L	CLIP
15286	SP46-BZS	NOTE 1	SCA-B
15287	SP46-SS	NOTE 2	SCA-B

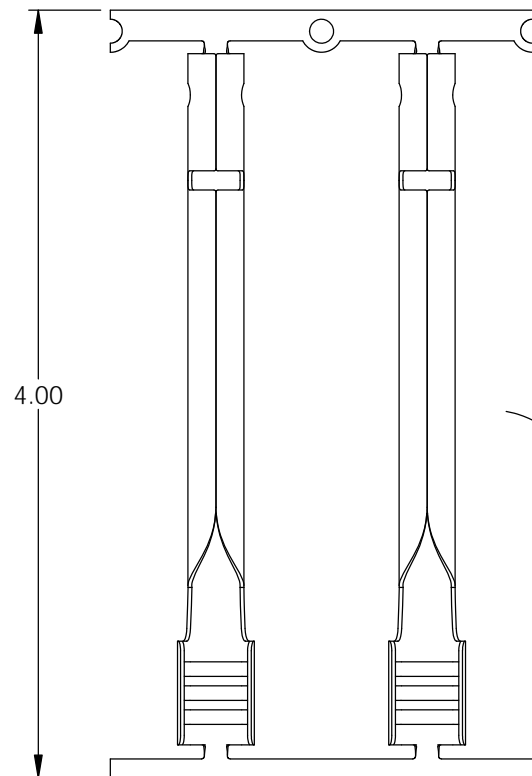
Rev.	Description of Change/ SCN#	Date
1	ECR# 4870 SCJ Redrawn in SW from ACAD Org.Eng.Dwg.Date: 3/19/04	6/14/19



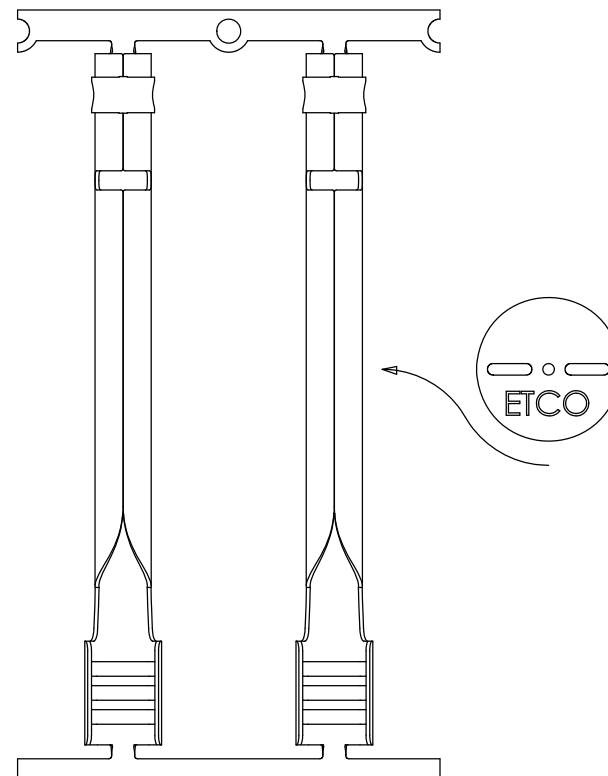
SECTION A-A



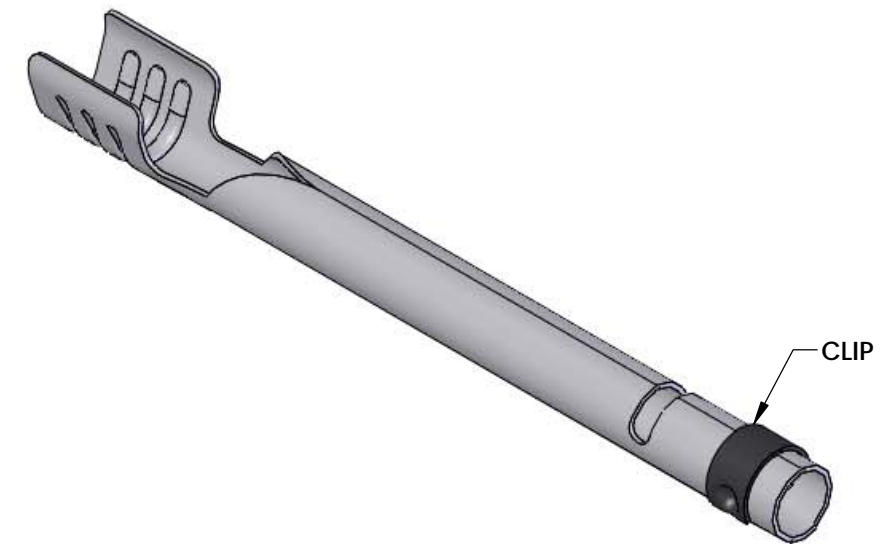
SECTION B-B



DIRECTION EXITING TOOL, EARS UP, TO THE FRONT



DIRECTION TOWARD APPLICATOR, EARS UP, TO THE FRONT, FROM RIGHT



UNCONTROLLED COPY

<p>THIRD ANGLE PROJECTION TOLERANCES UNLESS OTHERWISE SPECIFIED INCHES: .XX - ±.030 .XXX - ±.015 ANGLES: ±5°</p>	<p>TOOL NO. 2241</p>	<p>Title: Spark Plug Terminal</p>		
		<p>DO NOT SCALE DWG.</p>	<p>Drawn By: S.Johnson</p>	<p>Date: 6/14/19</p>
<p>ETCO Incorporated Engineered Products 25 Bellows Street Warwick, RI 02888 Phone: (401) 467-2400 Fax: (401) 467-9230 www.ETCO.com</p>		<p>Design Control By: ETCO</p>	<p>Scale: 3X</p>	<p>Size B</p>
		<p>Dwg. No.: SP46 cust</p>		