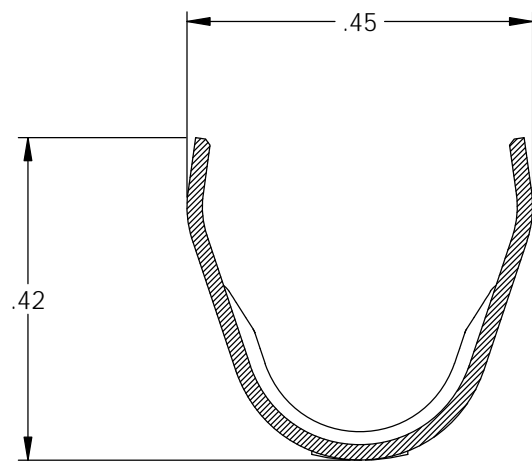
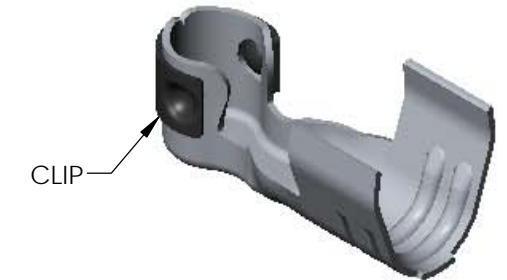
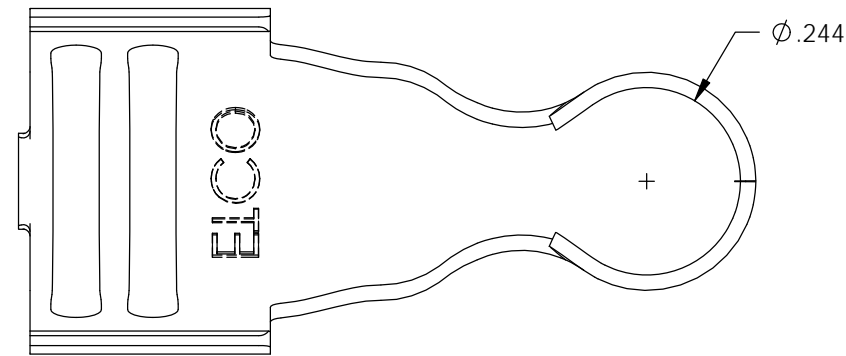


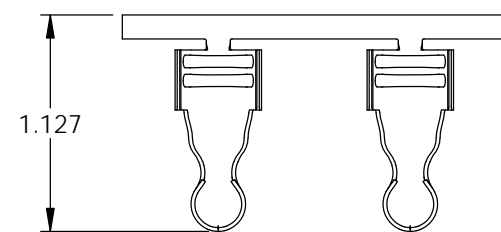
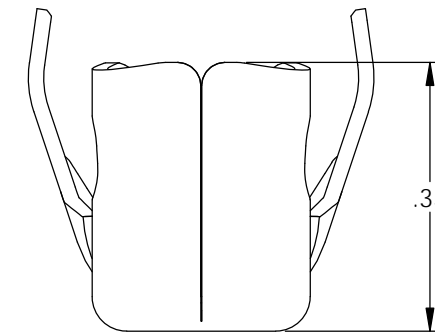
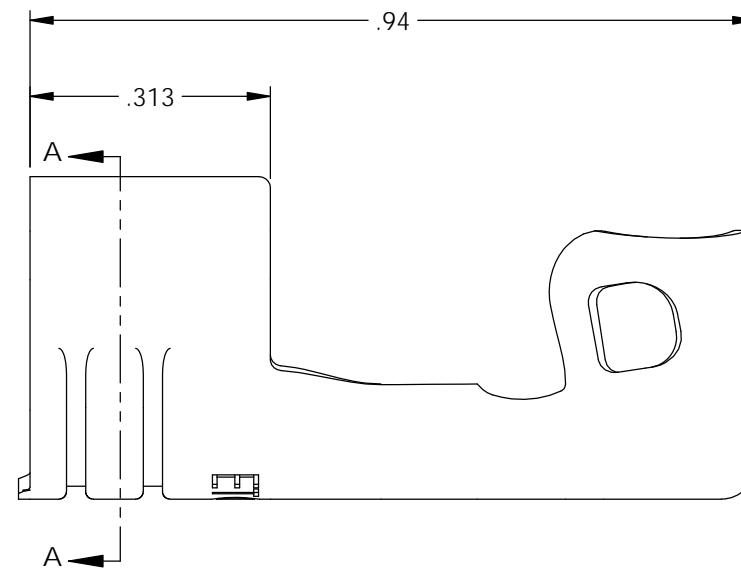
- NOTES:
1. MATERIAL: .020 THICK, ELECTRO-GALVANIZED ZINC <sup>(2)</sup> PLATED STEEL, #3 TEMPER (1/4 HARD) PER ETCO METAL CODE 0-0034.
  2. MATERIAL: .020 THICK, S430 STAINLESS STEEL, BRIGHT ANNEALED, PER ETCO METAL CODE 0-0051.
  3. PARTS MAY BE COATED WITH A LIGHT FILM OF LUBRICATION USED IN THE MANUFACTURING PROCESS.
  4. WIRE RANGE: 8mm.

P/C	DESCRIPTION	MAT'L	CLIP
15164	SP823-BZS	NOTE 1	SCA4-B
15244	SP823-SS	NOTE 2	SCA4-B

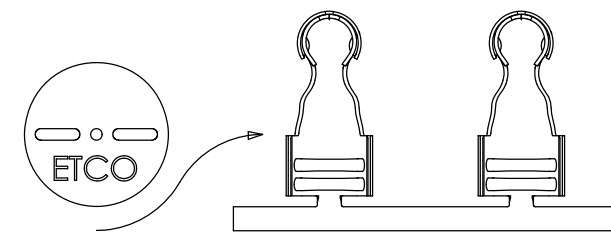
Rev.	Description of Change/ SCN#	Date
2	Redrawn in SolidWorks Orig. Eng. Dwg. Date: 3/13/00 ECR# 4870 SCJ	1/03/19



SECTION A-A



DIRECTION EXITING TOOL,  
EARS UP, TO THE BACK



DIRECTION TOWARD APPLICATOR,  
EARS UP, TO THE FRONT

THIS PRINT IS THE PROPERTY OF ETCO INCORPORATED. NO PART OF THIS DESIGN MAY BE USED IN ANY WAY WITHOUT WRITTEN CONSENT FROM ETCO INCORPORATED.

# UNCONTROLLED COPY

<p>THIRD ANGLE PROJECTION TOLERANCES UNLESS OTHERWISE SPECIFIED INCHES: .XX - ±.030 .XXX - ±.015 ANGLES: ±5°</p>	<p>TOOL NO. 2106 2161 2042</p>	<p>Title: 90° IGNITION TERMINAL</p>		
		<p>DO NOT SCALE DWG.</p>	<p>Drawn By: S.JOHNSON</p>	<p>Date: 1/03/19</p>
<p>ETCO Incorporated Engineered Products 25 Bellows Street Warwick, RI 02888 Phone: (401) 467-2400 Fax: (401) 467-9230 www.ETCO.com</p>		<p>Design Control By: ETCO</p>	<p>Scale: 4X</p>	<p>Size B</p>
		<p>Dwg. No.: SP823 cust</p>		