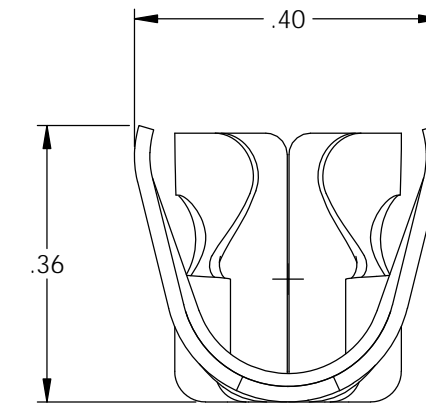
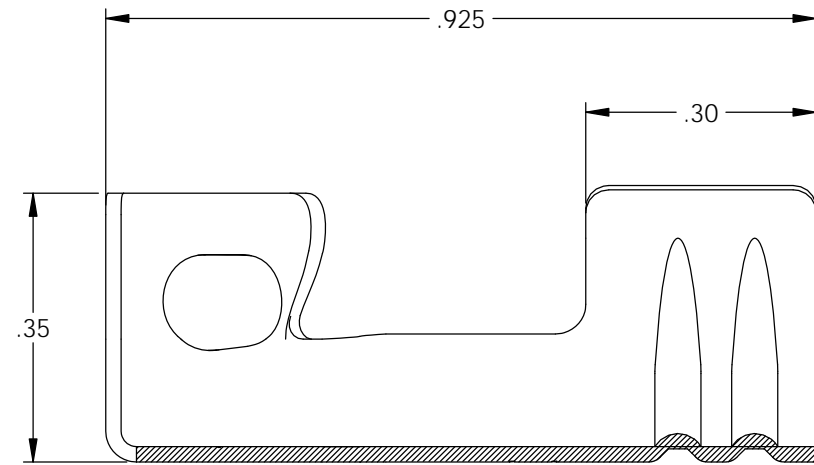
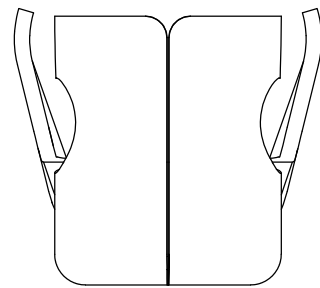
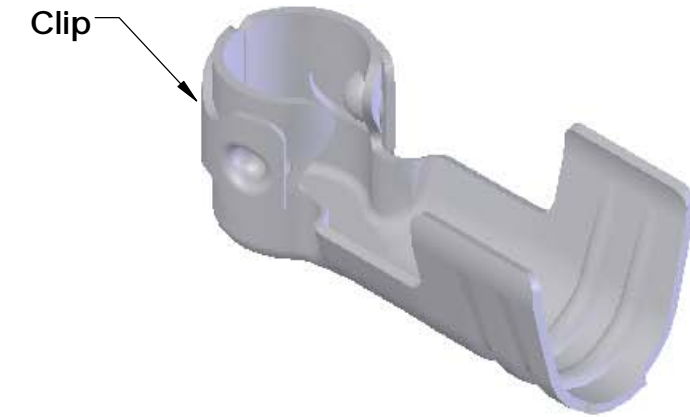
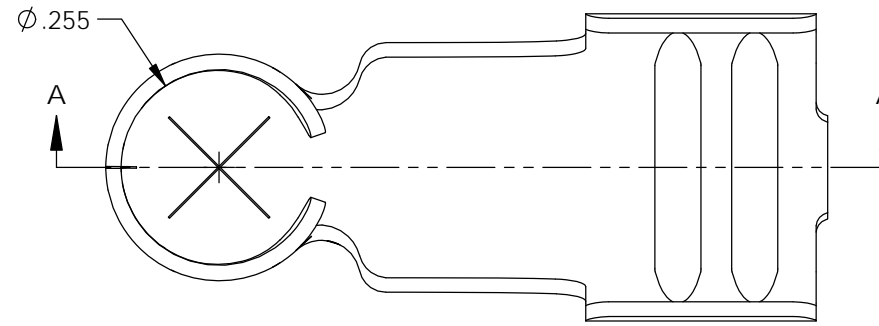
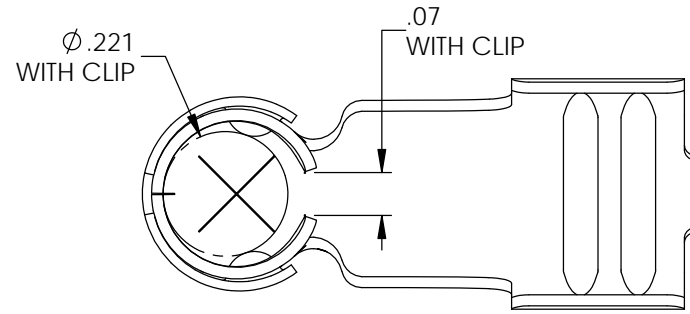


NOTES:

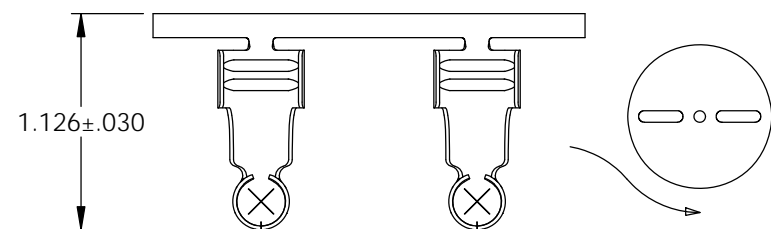
1. MATERIAL: .020 THICK, S430 STAINLESS STEEL, BRIGHT ANNEALED, PER ETCO METAL CODE 0-0051.
2. PARTS MAY BE COATED WITH A LIGHT FILM OF LUBRICATION USED IN THE MANUFACTURING PROCESS.
3. WIRE RANGE: 7mm CABLE.

P/C	DESCRIPTION	MAT'L	CLIP
15264	SP973-SS-HH	NOTE 1	SCA8

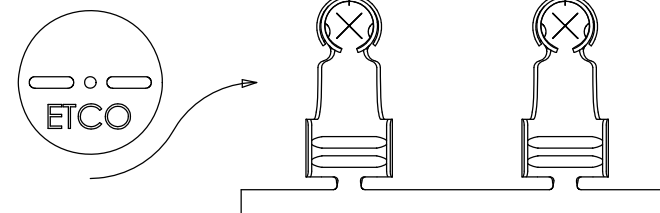
Rev.	Description of Change/ SCN#	Date
1	Redrawn in SW from ACAD Org.Eng.Dwg. Date: 11/01/02	11/19/18



SECTION A-A



DIRECTION EXITING TOOL,  
EARS UP, TO THE BACK



DIRECTION TOWARD APPLICATOR,  
EARS UP, TO THE FRONT

# UNCONTROLLED COPY

<p>THIRD ANGLE PROJECTION TOLERANCES UNLESS OTHERWISE SPECIFIED INCHES: .XX - <math>\pm .030</math> .XXX - <math>\pm .015</math> ANGLES: <math>\pm 5^\circ</math></p>	<p>TOOL NO. <b>2119</b></p>	<p>Title: <b>90° Ignition Terminal: 7mm</b></p>		
		<p>DO NOT SCALE DWG.</p>	<p>Drawn By: <b>S.Johnson</b></p>	<p>Date: <b>11/19/18</b></p>
<p>ETCO Incorporated Engineered Products 25 Bellows Street Warwick, RI 02888 Phone: (401) 467-2400 Fax: (401) 467-9230 www.ETCO.com</p>		<p>Design Control By: <b>ETCO</b></p>	<p>Scale: <b>4X</b></p>	<p>Size <b>B</b></p>
		<p>Dwg. No.: <b>SP973 cust</b></p>		