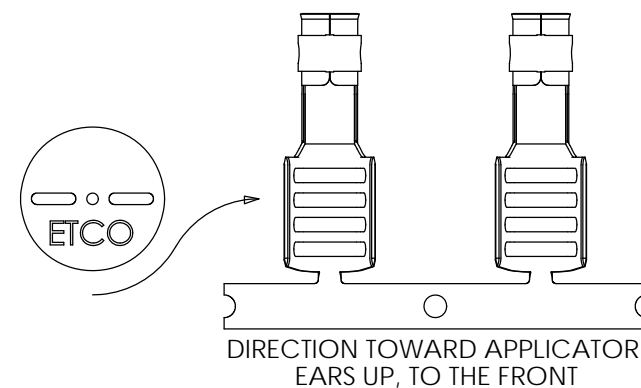
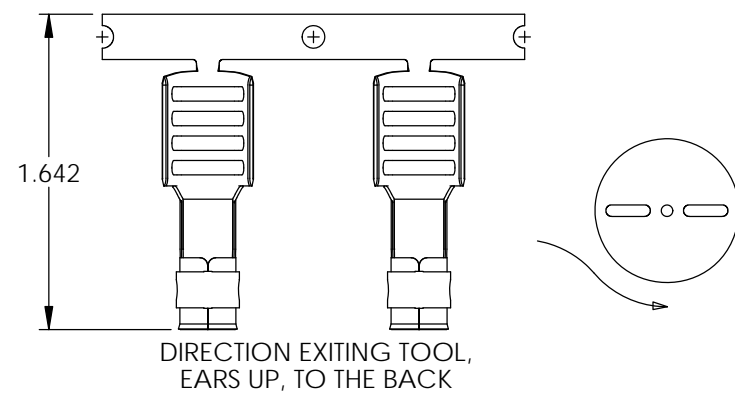
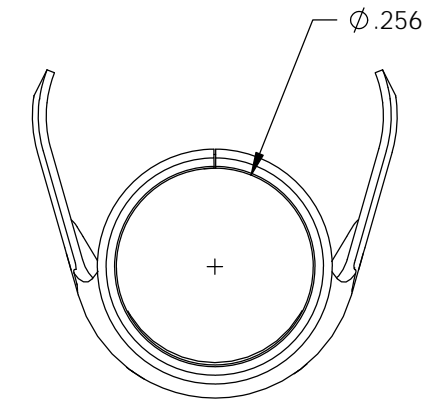
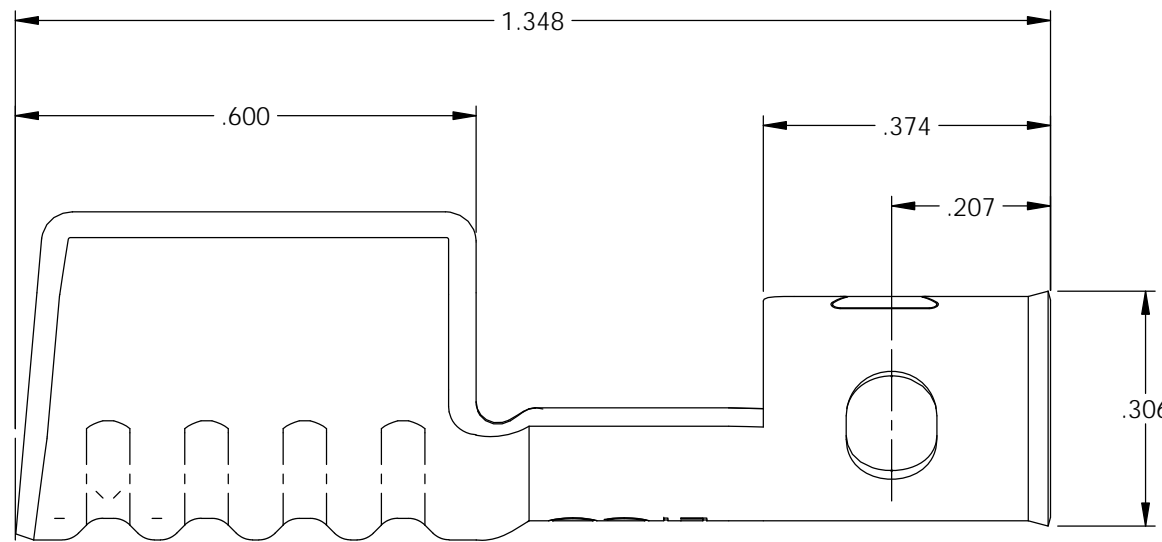
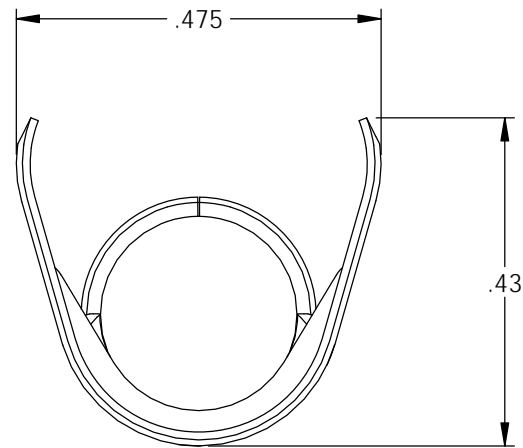
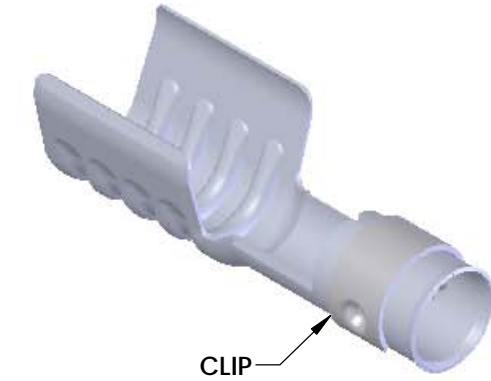
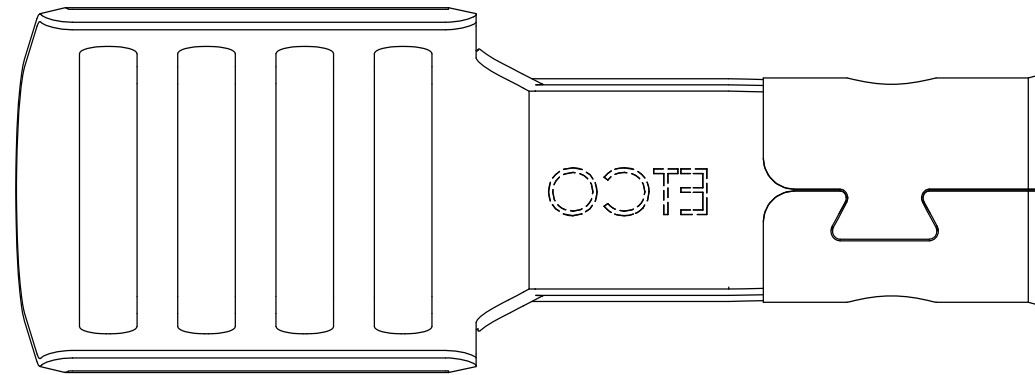


NOTES:

1. MATERIAL: .018 THICK 430 STAINLESS STEEL, BRIGHT ANNEALED, PER ETCO METAL CODE 0-0044.
2. PARTS MAY BE COATED WITH A LIGHT FILM OF LUBRICATION USED IN THE MANUFACTURING PROCESS.
3. WIRE RANGE: 8mm.
4. FOR MAXIMUM PERFORMANCE AND RELIABILITY, ALWAYS USE ETCO ENGINEERED IGNITION TERMINALS WITH ETCO AUTOMOTIVE INSULATOR BOOTS.

P/C	DESCRIPTION	MAT'L	CLIP
15517	SP98-8M-SS-WD	NOTE 1	SCA570
22018	SP98-8M-SS-WD-G	NOTE 1	SCA4-G

Rev.	Description of Change/ SCN#	Date
1	Redraw in SolidWorks SCJ Org.Eng.Dwg.Date: 7/17/08	1/08/19
1	ECR# 5837 SCJ	12/06/19



UNCONTROLLED COPY

<p>THIRD ANGLE PROJECTION TOLERANCES UNLESS OTHERWISE SPECIFIED INCHES: .XX - ±.030 .XXX - ±.015 ANGLES: ±5°</p>	<p>TOOL NO. 2129</p>	<p>Title: Spark Plug Terminal</p>	
		<p>DO NOT SCALE DWG.</p>	<p>Drawn By: S.Johnson Date: 1/08/19</p>
<p>ETCO Incorporated Engineered Products 25 Bellows Street Warwick, RI 02888 Phone: (401) 467-2400 Fax: (401) 467-9230 www.ETCO.com</p>		<p>Design Controlled By: ETCO</p>	<p>Scale: 4X Size B</p>
<p>Dwg. No.: SP98-8M-WD cust</p>			