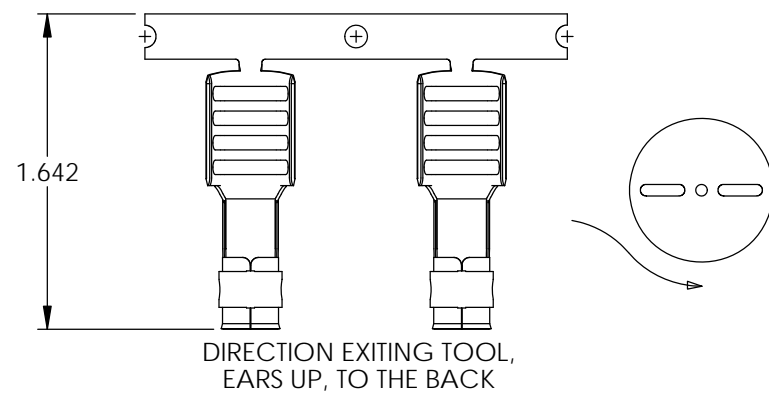
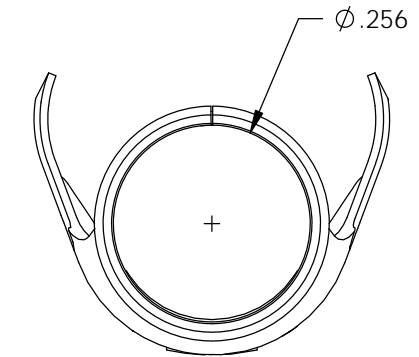
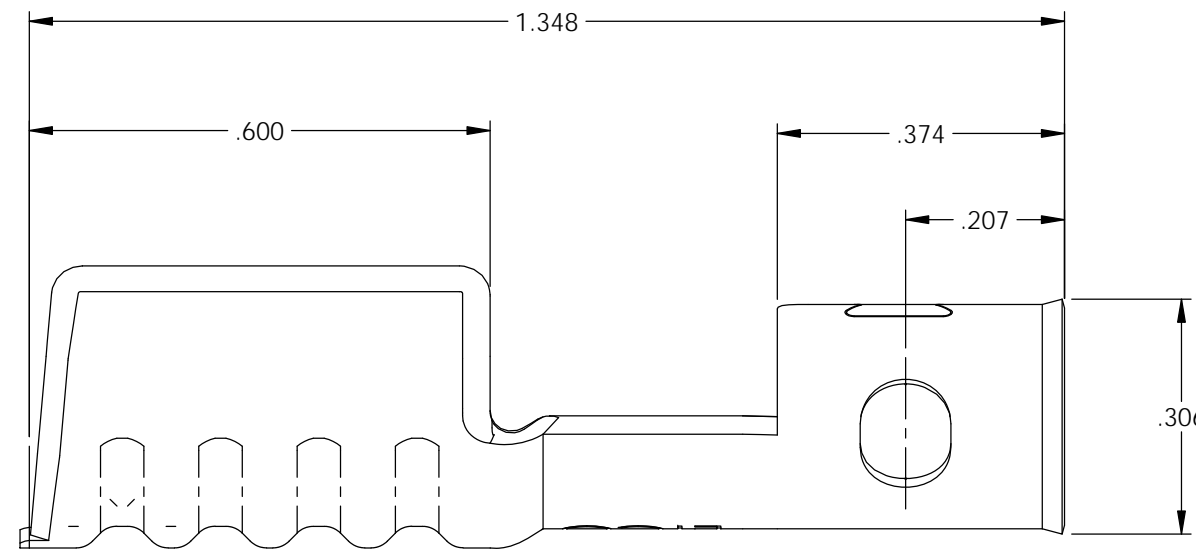
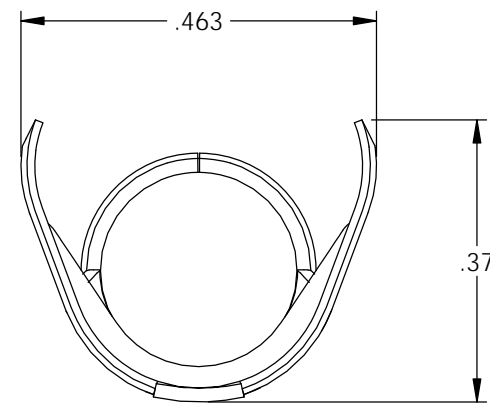
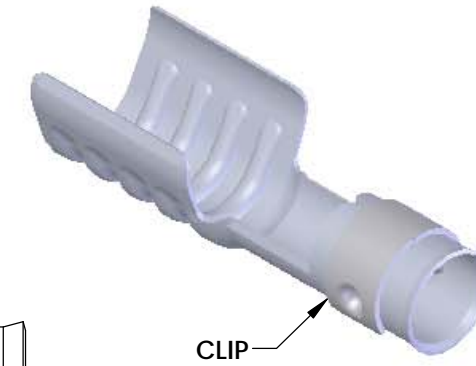
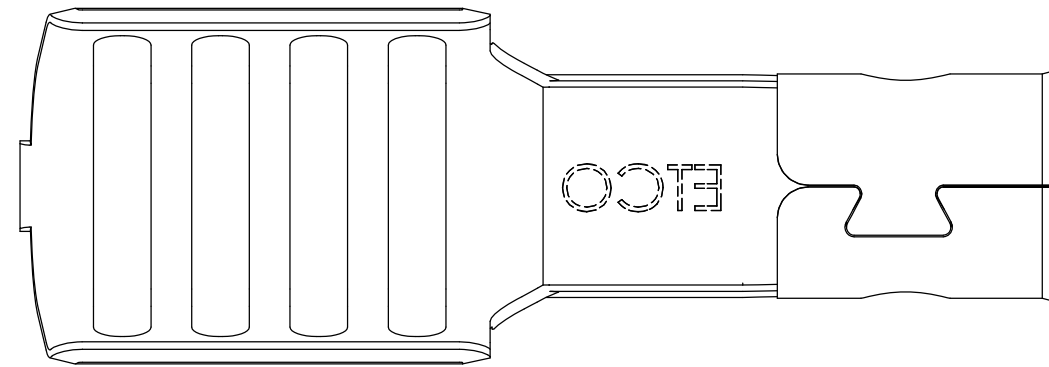


NOTES:

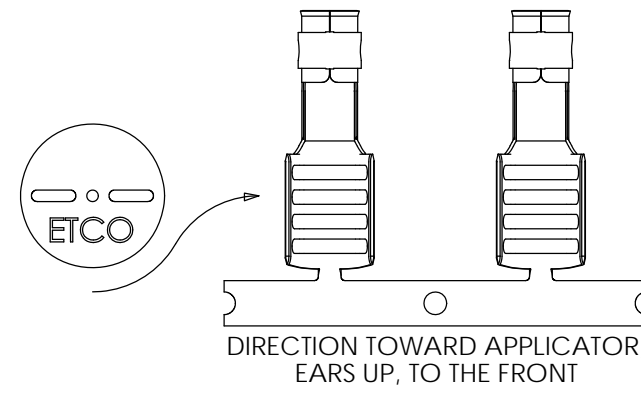
1. MATERIAL: .018 THICK 430 STAINLESS STEEL, BRIGHT ANNEALED, PER ETCO METAL CODE 0-0044.
2. PARTS MAY BE COATED WITH A LIGHT FILM OF LUBRICATION USED IN THE MANUFACTURING PROCESS.
3. WIRE RANGE: 7mm.
4. FOR MAXIMUM PERFORMANCE AND RELIABILITY, ALWAYS USE ETCO ENGINEERED IGNITION TERMINALS WITH ETCO AUTOMOTIVE INSULATOR BOOTS.

P/C	DESCRIPTION	MAT'L	CLIP
15518	SP98-SS-WD	NOTE 1	SCA570

Rev.	Description of Change/ SCN#	Date
1	Redraw in SolidWorks SCJ Org.Eng.Dwg.Date: 2/21/08	1/04/19



DIRECTION EXITING TOOL,  
EARS UP, TO THE BACK



DIRECTION TOWARD APPLICATOR,  
EARS UP, TO THE FRONT

THIS PRINT IS THE PROPERTY OF ETCO INCORPORATED. NO PART OF THIS DESIGN MAY BE USED IN ANY WAY WITHOUT WRITTEN CONSENT FROM ETCO INCORPORATED.

# UNCONTROLLED COPY

<p>THIRD ANGLE PROJECTION TOLERANCES UNLESS OTHERWISE SPECIFIED INCHES: .XX - ±.030 .XXX - ±.015 ANGLES: ±5°</p>	<p>TOOL NO. <b>2129</b></p>	<p>Title: <b>Spark Plug Terminal</b></p>		
		<p>DO NOT SCALE DWG.</p>	<p>Drawn By: <b>S.Johnson</b></p>	<p>Date: <b>1/08/19</b></p>
<p>ETCO Incorporated Engineered Products 25 Bellows Street Warwick, RI 02888 Phone: (401) 467-2400 Fax: (401) 467-9230 www.ETCO.com</p>		<p>Design Controlled By: <b>ETCO</b></p>	<p>Scale: <b>4X</b></p>	<p>Size <b>B</b></p>
<p>Dwg. No.: <b>SP98-WD cust</b></p>				