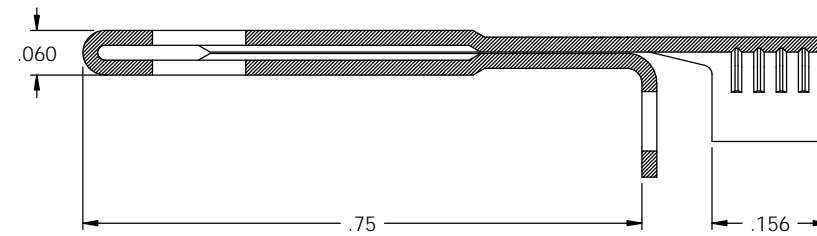
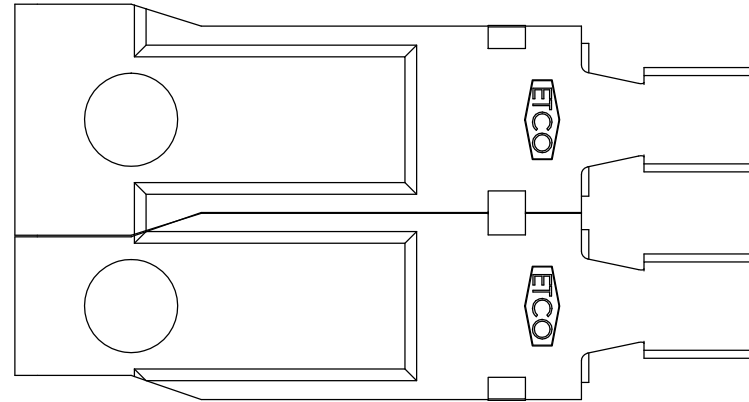


NOTES:

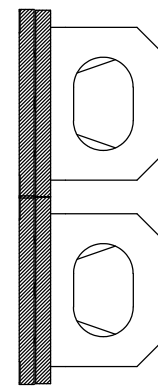
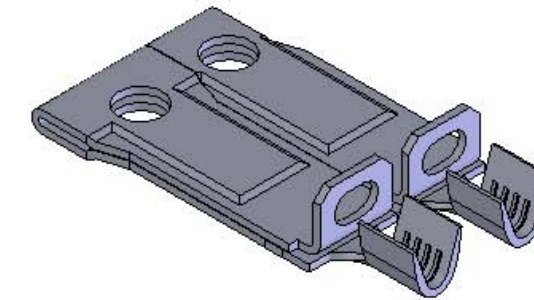
1. MATERIAL: .020 THICK C26000 BRASS; 1/2 HARD
ANNEALED TO TEMPER; PER ETCO METAL CODE 1-0137.
2. MATERIAL: .020 THICK C26000 PRE-TINNED BRASS; 1/2 HARD
ANNEALED TO TEMPER; PER ETCO METAL CODE 1-1569.
3. FOR WINDING INSTRUCTIONS SEE PR-3-07.
4. WIRE RANGE: #14-#18 AWG.

P/C	DESCRIPTION (4)	MAT'L	REWIND	Ⓜ	Ⓢ
09833	SPH817F-A-HB	NOTE 1	NO	X	X
09849	SPH817F-ARB-HB	NOTE 1	YES	X	X
09862	SPH817F-A-THB	NOTE 2	NO		
14055	SPH817F-D-HB	NOTE 1	NO	X	X
14071	SPH817F-ARC-HB	NOTE 1	YES	X	X

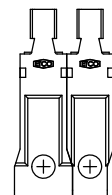
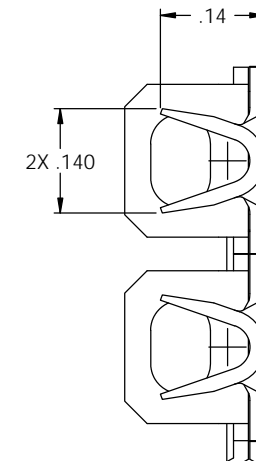
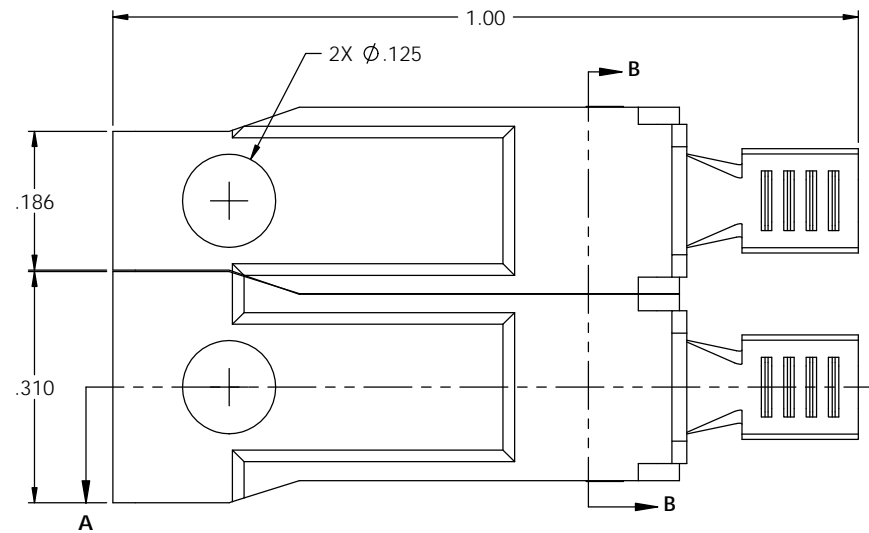
Rev.	Description of Change/ SCN#	Date
1	TRANSFERED FRO CP TP EP	10-27-04
2	SCN# 102918 SCJ	4-6-05
3	COMPLETED P/C LIST SCJ	9-19-08
4	ECR# 816 SCJ	10-26-11
5	ECR# 2428 SCJ	8/13/13



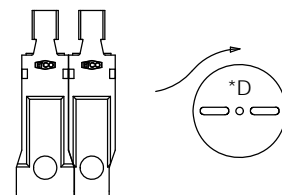
SECTION A-A
SCALE 6 : 1



SECTION B-B
SCALE 6 : 1



DIRECTION EXITING TOOL
EARS DOWN, TO THE BACK
SEE NOTE 3



DIRECTION EXITING TOOL
EARS DOWN, TO THE BACK
SEE NOTE 3

UNCONTROLLED COPY

 THIRD ANGLE PROJECTION	TOOL NO. 0896	Title: PADDED BLADE			
		DO NOT SCALE DWG.	Drawn By: S.JOHNSON	Date: 10-27-04	
TOLERANCES UNLESS OTHERWISE SPECIFIED INCHES: .XX - ±.030 .XXX - ±.015 ANGLES: ±5°		ETCO Incorporated Engineered Products 25 Bellows Street Warwick, RI 02888 Phone: (401) 467-2400 Fax: (401) 467-9230 www.ETCO.com	Chk'd/App'd By:	Scale: 6X	Size: C
		Dwg. No.: SPH817F cust			