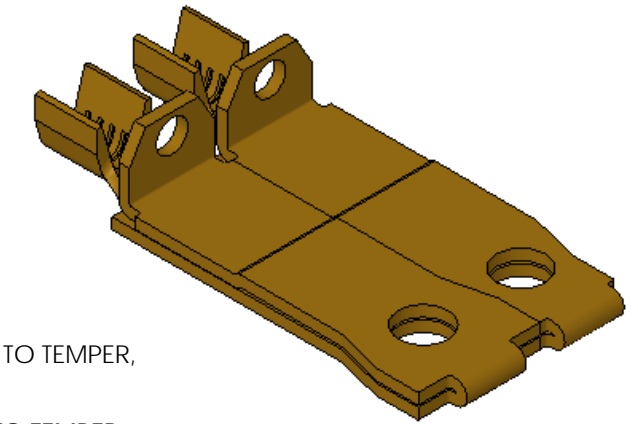
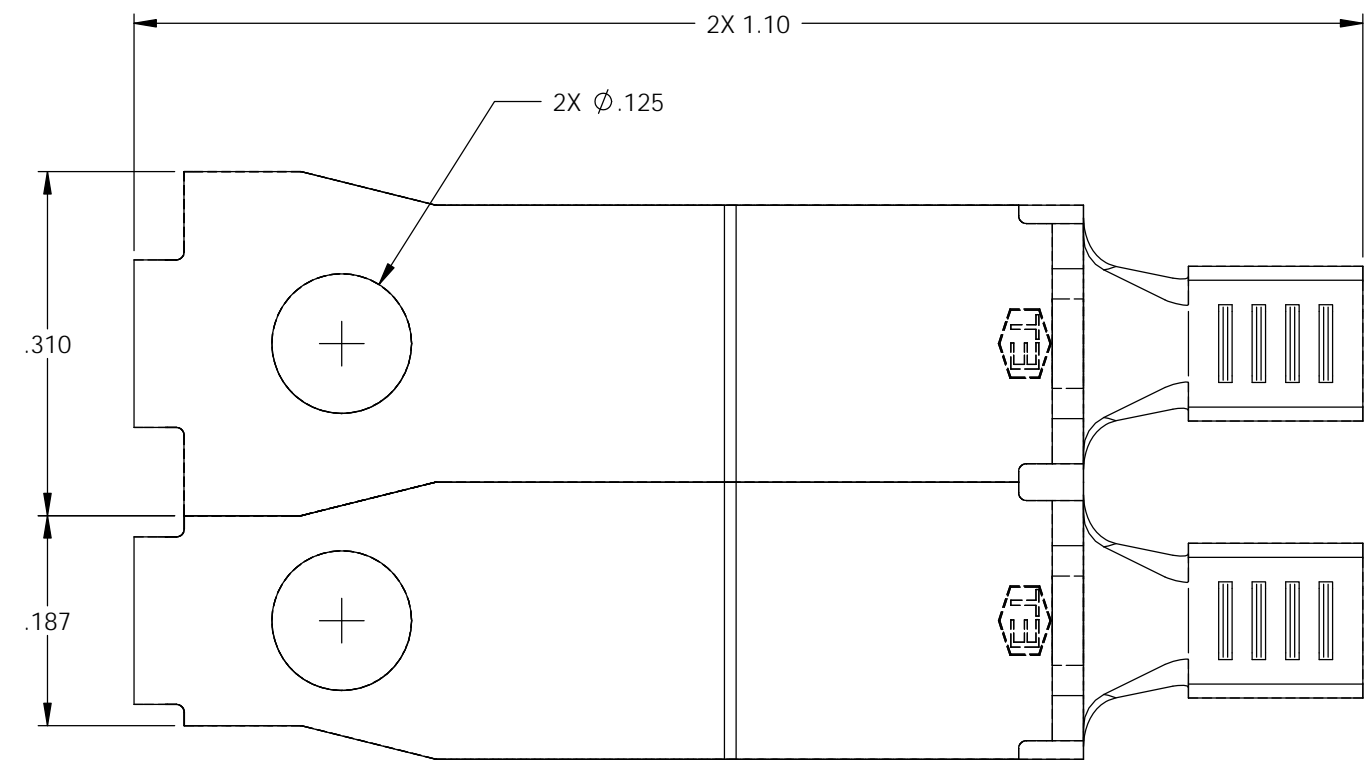
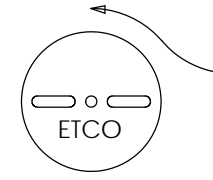
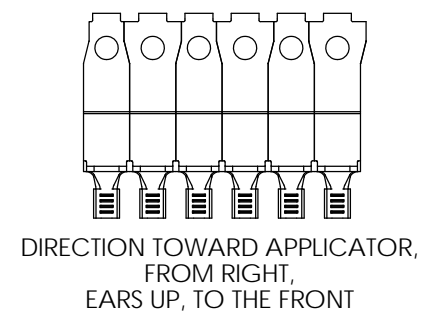
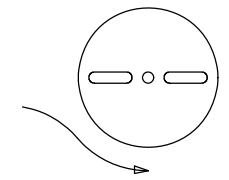
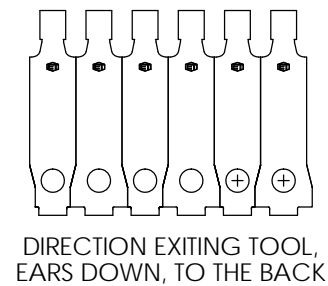
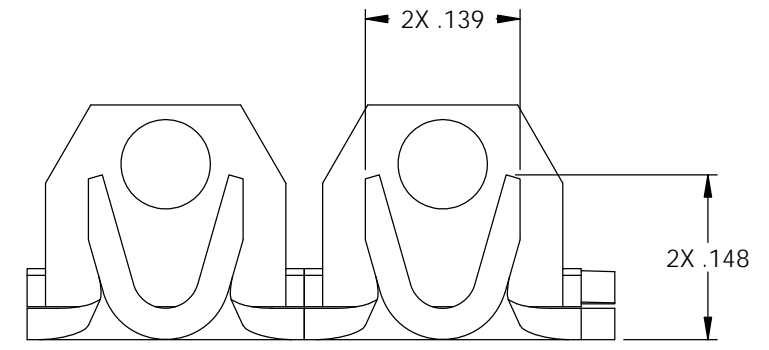
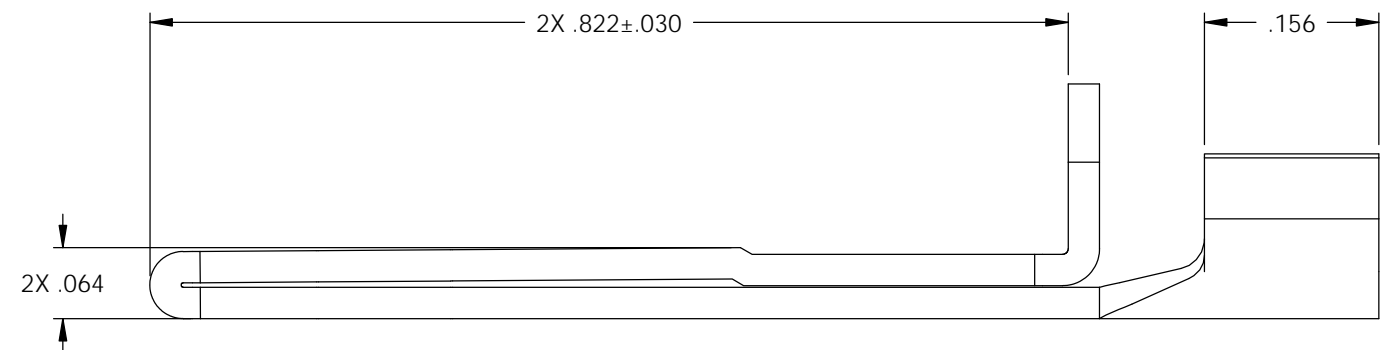


Rev.	Description of Change/ SCN#	Date
1	TRANSFERED FROM CP SCJ	10-27-04
2	SCN# 102918 SCJ	4-6-05
3	ECR# 816 SCJ	10-26-11

P/C	DESCRIPTION ③	MAT'L	AI	SP
09911	SPL817F-A-HB	NOTE 1	X	X



- NOTE:
- MAT'L: .028 THK., BRASS, #2 TEMPER (HALF HARD), ANNEALED TO TEMPER, PER ETCO METAL CODE NO. 00097.
  - MAT'L: .028 THK., PER-TINNED BRASS, #2 TEMPER (HALF HARD), ANNEALED TO TEMPER, PER ETCO METAL CODE NO. 00144.
  - PARTS MAY BE COATED WITH A LIGHT FILM OF LUBRICATION USED IN THE MANUFACTURING PROCESS.
  - WIRE RANGE: 14-18 AWG.



THIS PRINT IS THE PROPERTY OF ETCO INCORPORATED. NO PART OF THIS DESIGN MAY BE USED IN ANY WAY WITHOUT WRITTEN CONSENT FROM ETCO INCORPORATED.

<b>UNCONTROLLED COPY</b>					
<p>THIRD ANGLE PROJECTION</p>	TOOL NO.	Title: POLARIZED BLADE			
	0897	DO NOT SCALE DWG.		Drawn By: S. JOHNSON	Date: 10-16-03
<p>TOLERANCES UNLESS OTHERWISE SPECIFIED</p> <p>INCHES: .XX - ±.030 .XXX - ±.015</p> <p>ANGLES - ±5°</p>	<p>ETCO</p>	ETCO Incorporated Engineered Products 25 Bellows Street Warwick, R.I. 02888 Phone: (401)467-2400 FAX: (401)467-9230 www.ETCO.com		Chk'd/App'd By:	Scale: 6:1
		Dwg. No.: SPL817F		Size: B	