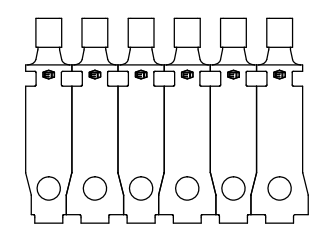
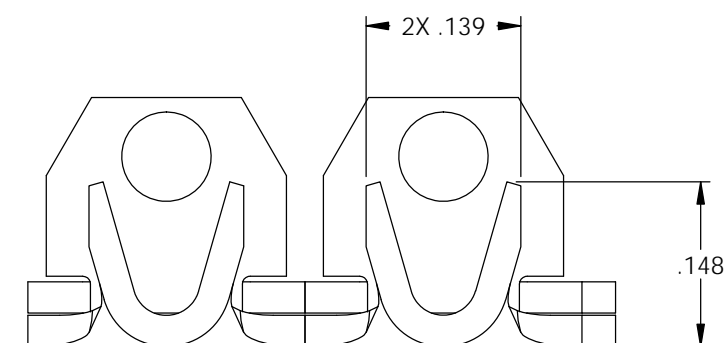
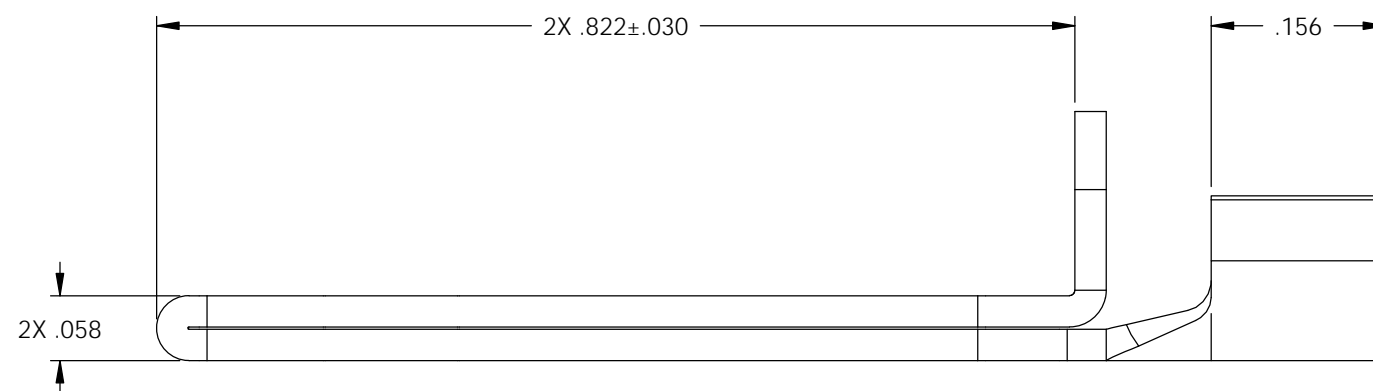
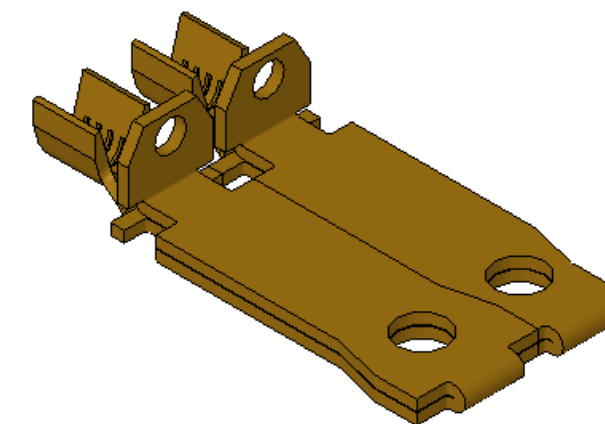
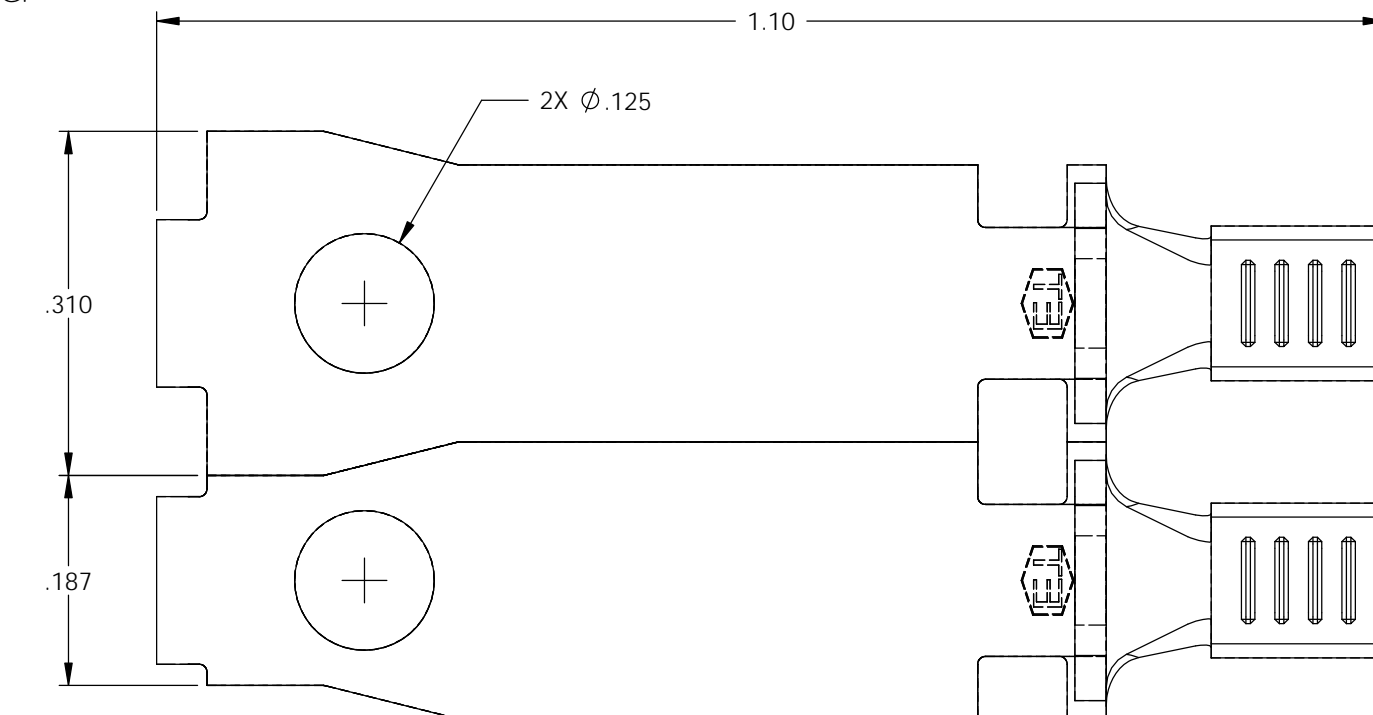


NOTE:

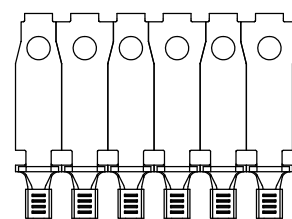
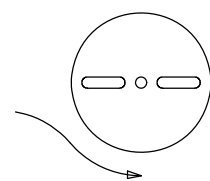
- 1.) MAT'L: .028 THK., BRASS, #2 TEMPER (HALF HARD), ANNEALED TO TEMPER, PER ETCO METAL CODE NO. 00097.
- 2.) MAT'L: .028 THK., PER-TINNED BRASS, #2 TEMPER (HALF HARD), ANNEALED TO TEMPER, PER ETCO METAL CODE NO. 00144.
- 3.) PARTS MAY BE COATED WITH A LIGHT FILM OF LUBRICATION USED IN THE MANUFACTURING PROCESS.
- 4.) WIRE RANGE: 14-18 AWG.

| P/C | DESCRIPTION (3) | MAT'L | AL | SP |
|-------|-----------------|--------|----|----|
| 14249 | SPL817FFN-A-HB | NOTE 1 | X | X |

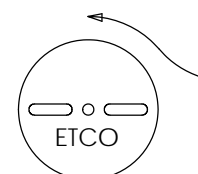
| Rev. | Description of Change/ SCN# | Date |
|------|-----------------------------|----------|
| 1 | TRANSFERED FROM CP SCJ | 10-27-04 |
| 2 | SCN# 102918 SCJ | 4-6-05 |
| 3 | ECR# 816 SCJ | 10-26-11 |



DIRECTION EXITING TOOL, EARS DOWN, TO THE BACK



DIRECTION TOWARD APPLICATOR, FROM RIGHT, EARS UP, TO THE FRONT



UNCONTROLLED COPY

| | | | | |
|---|--|--|-----------------------------------|-----------------------|
| <p>THIRD ANGLE PROJECTION</p> | <p>TOOL NO.</p> <p>0897</p> | <p>Title: POLARIZED NOTCHED BLADE</p> | | |
| | <p>TOLERANCES UNLESS OTHERWISE SPECIFIED</p> <p>INCHES: .XX - ±.030 .XXX - ±.015</p> <p>ANGLES - ±5°</p> | <p>ETCO</p> | <p>DO NOT SCALE DWG.</p> | |
| <p>ETCO Incorporated Engineered Products 25 Bellows Street Warwick, R.I. 02888 Phone: (401)467-2400 FAX: (401)467-9230 www.ETCO.com</p> | | | <p>Chk'd/App'd By:</p> | <p>Date: 10-16-03</p> |
| | | | <p>Dwg. No.: SPL817FFN</p> | |