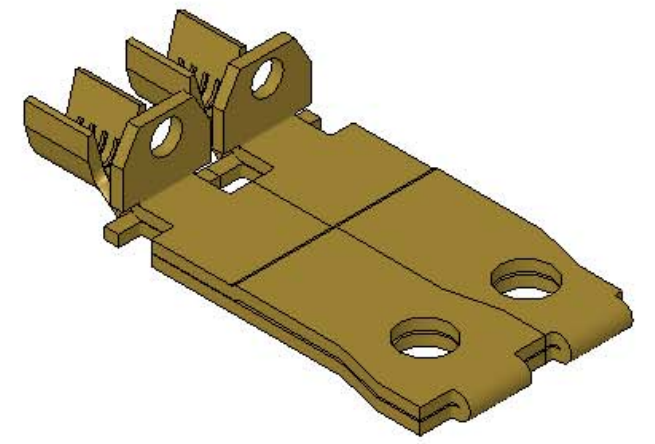


THIS PRINT IS THE PROPERTY OF ETCO INCORPORATED. NO PART OF THIS DESIGN MAY BE USED IN ANY WAY WITHOUT WRITTEN CONSENT FROM ETCO INCORPORATED.

P/C	DESCRIPTION (4)	MAT'L	REWIND		
09533	SPL817FN-ARC-HB	NOTE 1	YES	X	X
14051	SPL817FN-A-HB	NOTE 1	NO	X	X
14052	SPL817FN-A-THB	NOTE 2	NO		
14076	SPL817FN-D-HB	NOTE 1	NO	X	X

Rev.	Description of Change/ SCN#	Date
1	TRANSFERED FROM CP SCJ	10-29-04
2	SCN# 102819 SCJ	1-18-05
3	SCN# 102918 SCJ	4-6-05
4	ECR# 816 SCJ	10-26-11
5	ECR# 3136 SCJ	7/08/14

- NOTE:
- MAT'L: .028 THK., BRASS, #2 TEMPER (HALF HARD), ANNEALED TO TEMPER, PER ETCO METAL CODE NO. 1-0097.
 - MAT'L: .028 THK., PER-TINNED BRASS, #2 TEMPER (HALF HARD), ANNEALED TO TEMPER, PER ETCO METAL CODE NO. 1-1705.
 - FOR WINDING AND REWIND INSTRUCTIONS SEE PR-3-07.
 - PARTS MAY BE COATED WITH A LIGHT FILM OF LUBRICATION USED IN THE MANUFACTURING PROCESS.
 - WIRE RANGE: 14-18 AWG.



UNCONTROLLED COPY

 THIRD ANGLE PROJECTION TOLERANCES UNLESS OTHERWISE SPECIFIED INCHES: .XX - ±.030 .XXX - ±.015 ANGLES - ±5°	TOOL NO. 0897 ETCO	Title: POLARIZED NOTCHED BLADE	
		DO NOT SCALE DWG.	Drawn By: S.JOHNSON Chk'd/App'd By:
		Dwg. No.: SPL817FN	