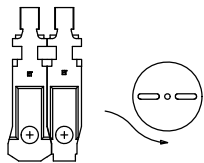
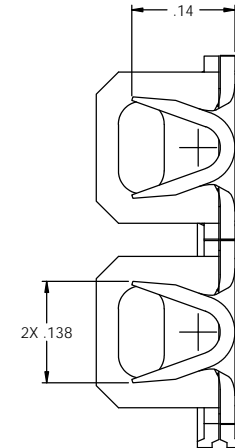
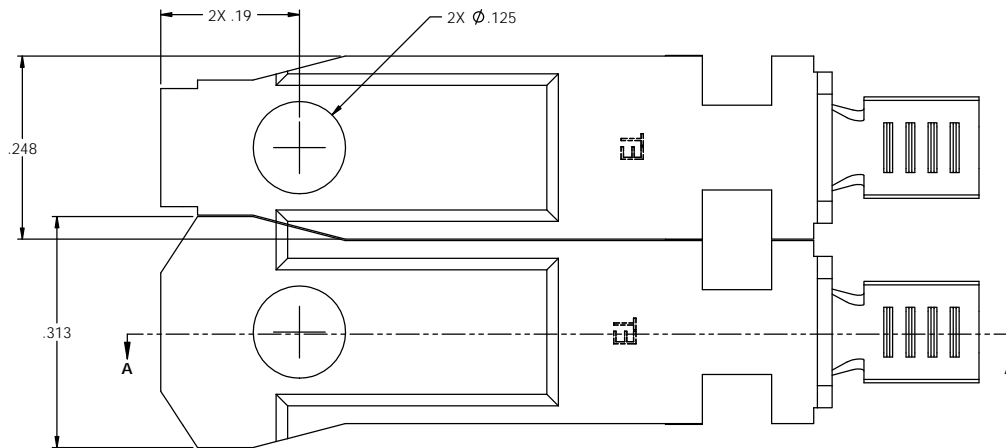
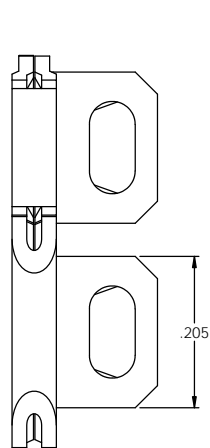
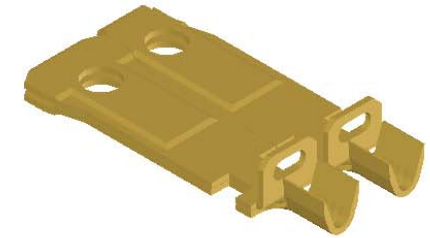
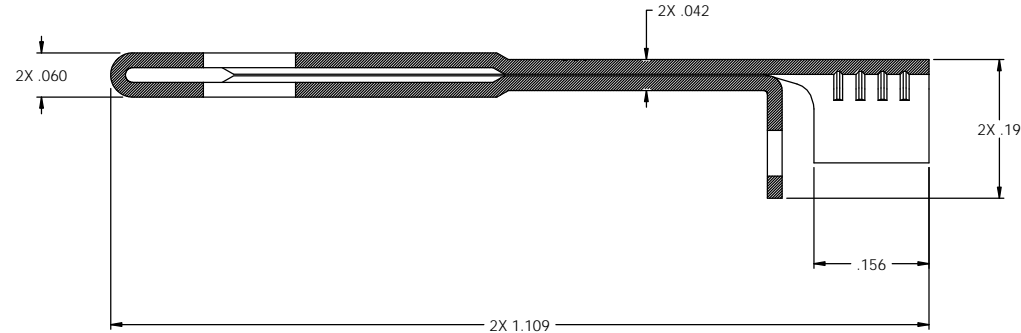


NOTES:

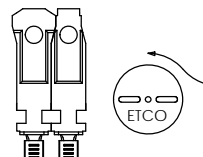
1. MATERIAL: .020 THICK C26000 BRASS: 1/2 HARD
ANNEALED TO TEMPER; PER ETCO METAL CODE 04560.
2. MATERIAL: .020 THICK C26000 PRETINNED BRASS: 1/2 HARD
ANNEALED TO TEMPER; PER ETCO METAL CODE 00143.
3. WIRE RANGE: #14-#18 AWG.

P/C	DESCRIPTION (1)	MAT'L
14226	SPQ817F2-A-HB	NOTE 1

Rev.	Description of Change/ SCN#	Date
1	ECR# 816 SCJ	10-26-11
2	ECR# 963 SCJ	12-6-11



DIRECTION EXITING TOOL
EARS DOWN, TO THE BACK



DIRECTION TOWARD APPLICATOR, (2)
EARS UP, TO THE FRONT

UNCONTROLLED COPY

<p>THIRD ANGLE PROJECTION</p>	TOOL NO.	Title: POLARIZED NOTCHED BLADE	
	0911	DO NOT SCALE DWG.	Drawn By: S.JOHNSON Date: 9-2-08
<p>TOLERANCES UNLESS OTHERWISE SPECIFIED</p> <p>INCHES: .XX - ±.030 XXX - ±.015</p> <p>ANGLES: ±5°</p>	<p>ETCO Incorporated Engineered Products 25 Bellows Street Warwick, RI 02888 Phone: (401) 467-2400 Fax: (401) 467-9230 www.ETCO.com</p>	<p>CHK'd/App'd By:</p>	<p>Scale: 8X Size: C</p>
		Dwg. No.: SPQ817F2 cust	