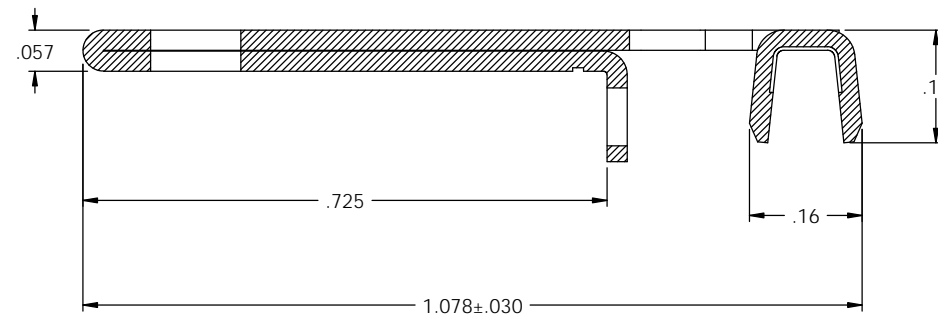
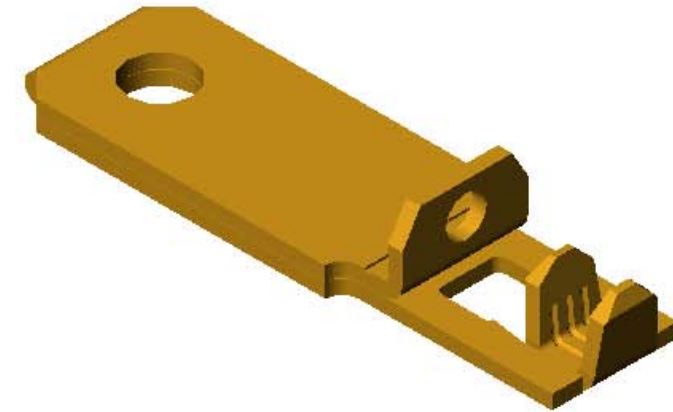
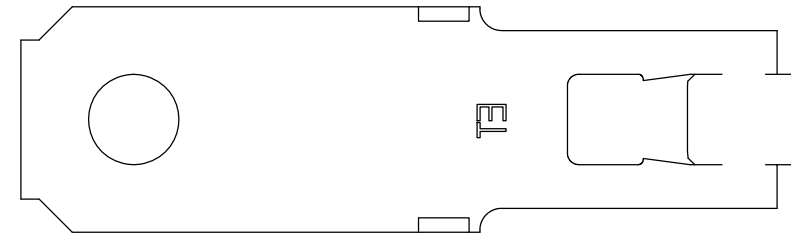


NOTES:

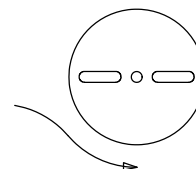
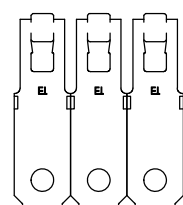
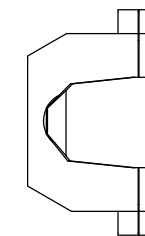
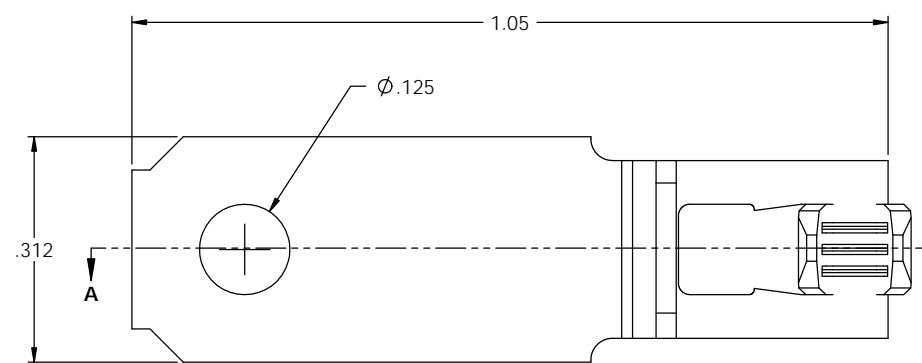
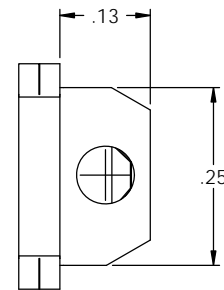
1. MATERIAL: .028 THICK C26000 BRASS; 1/2 HARD  
ANNEALED TO TEMPER; PER ETCO METAL CODE 00724.
2. FOR WINDING AND REWINDING INSTRUCTIONS SEE PR-3-07.
3. WIRE RANGE: 14-18 AWG.

P/C	DDESCRIPTION (7)	MAT'L	REWIND	RA	SP
14130	SPRA-A-HB	NOTE 1	NO	X	X
14117	SPRA-ARB-HB	NOTE 1	YES	X	X

Rev.	Description of Change/ SCN#	Date
1	TRANSFER FROM CP TO EP	2-23-04
2	SCN# 102702 SCJ	9-27-04
3	SCN# 102735 SCJ	10-29-07
4	SCN# 102812 & 102819 SCJ	1-18-05
5	SCN# 102918 SCJ	4-8-05
6	ECR# 816 SCJ	10-27-11



SECTION A-A  
SCALE 6 : 1



DIRECTION EXITING TOOL  
EARS DOWN, TO THE BACK  
SEE NOTE 2

THIS PRINT IS THE PROPERTY OF ETCO INCORPORATED. NO PART OF THIS DESIGN MAY BE USED IN ANY WAY WITHOUT WRITTEN CONSENT FROM ETCO INCORPORATED.

UNCONTROLLED COPY			
 THIRD ANGLE PROJECTION  TOLERANCES UNLESS OTHERWISE SPECIFIED INCHES: .XX - ±.030 .XXX - ±.015 ANGLES - ±5°	TOOL NO. <b>0892</b>	Title: <b>RIGHT ANGLE-POLARIZED BLADE</b>	
		DO NOT SCALE DWG. ETCO Incorporated Engineered Products 25 Bellows Street Warwick, R.I. 02888 Phone: (401)467-2400 FAX: (401)467-9230 www.ETCO.com	Drawn By: <b>S.JOHNSON</b> Chk'd/App'd By:
		Dwg. No.: <b>SPRA</b>	