

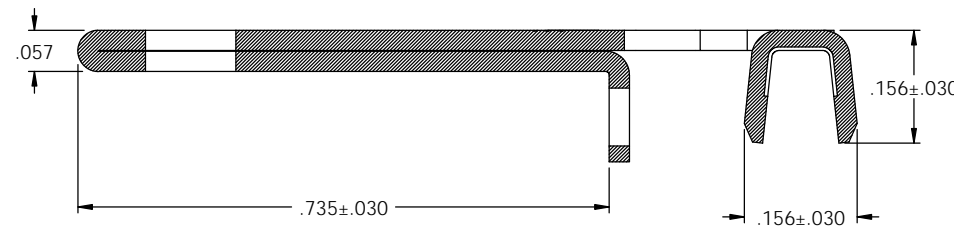
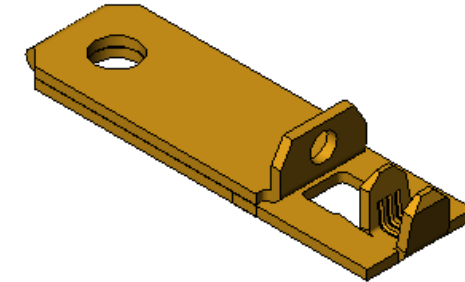
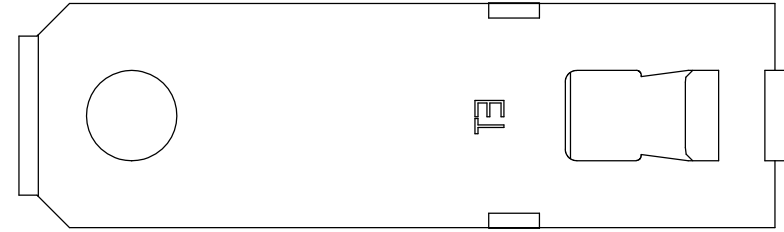


NOTES:

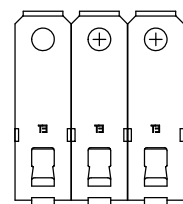
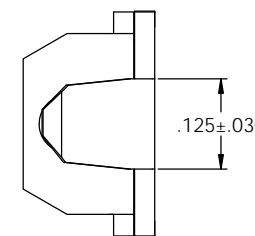
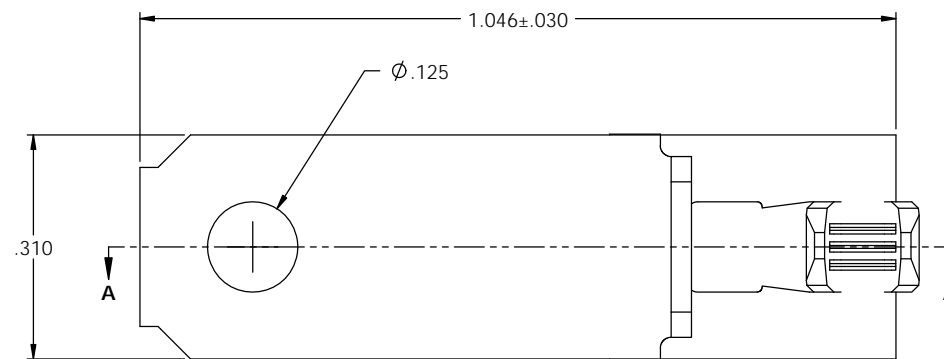
1. MATERIAL: .028 THICK C26000 BRASS; 1/2 HARD  
ANNEALED TO TEMPER; PER ETCO METAL CODE 00724.
2. FOR WINDING AND REWINDING INSTRUCTIONS SEE WI-09-10-8.
3. WIRE RANGE: #14-#18 AWG.

P/C	DESCRIPTION (4)	MAT'L	REWIND		
14122	SPRA1-B-HB	NOTE 1	NO	X	X
14229	SPRA1-BRA-HB	NOTE 1	YES	X	X

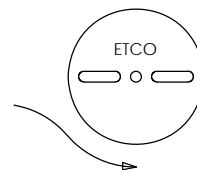
Rev.	Description of Change/SCN#	Date
1	TRANSFER FROM CP TO EP	10-29-04
2	SCN# 102845 SCJ	2-11-05
3	SCN# 102918 SCJ	4-8-05
4	ECR# 816 SCJ	10-27-11





SECTION A-A  
SCALE 6 : 1



DIRECTION EXITING TOOL  
EARS DOWN, TO THE FRONT  
SEE NOTE 2



UNCONTROLLED COPY			
 THIRD ANGLE PROJECTION  TOLERANCES UNLESS OTHERWISE SPECIFIED INCHES: .XX - ±.030 .XXX - ±.015 ANGLES - ±5°	TOOL NO. <b>0893</b>	Title: <b>RIGHT ANGLE-POLARIZED BLADE</b>	
	DO NOT SCALE DWG.	Drawn By: <b>S. JOHNSON</b>	Date: <b>10-29-04</b>
	ETCO Incorporated Engineered Products 25 Bellows Street Warwick, R.I. 02888 Phone: (401)467-2400 FAX: (401)467-9230 www.ETCO.com	Chk'd/App'd By:	Scale: <b>6X</b> Size: <b>C</b>
		Dwg. No.: <b>SPRA1</b>	