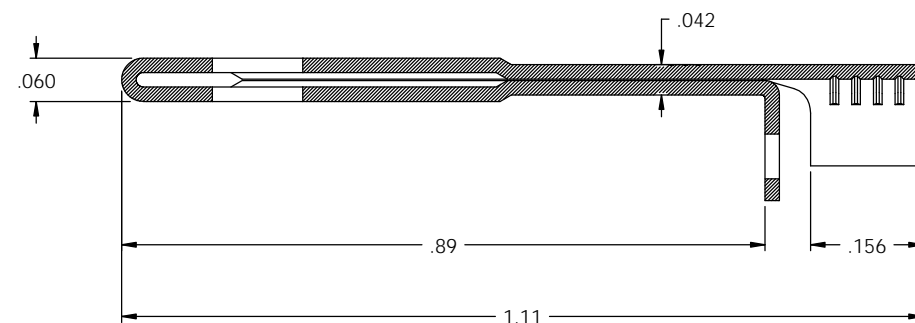
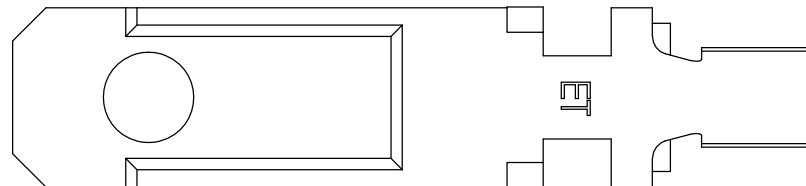


NOTES:

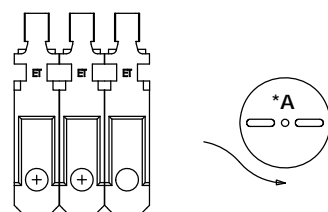
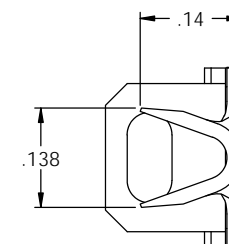
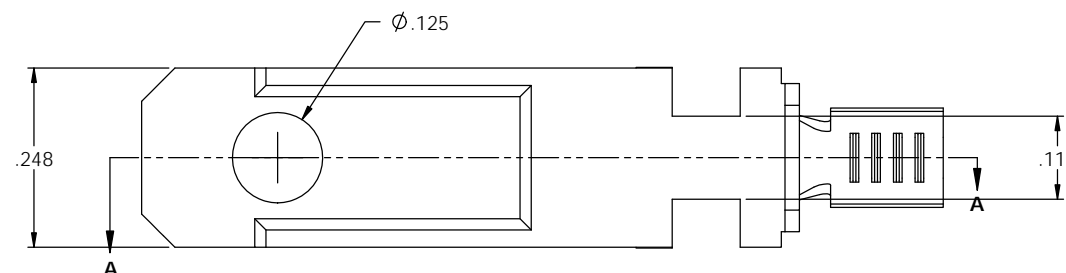
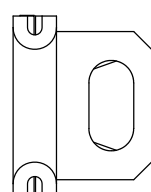
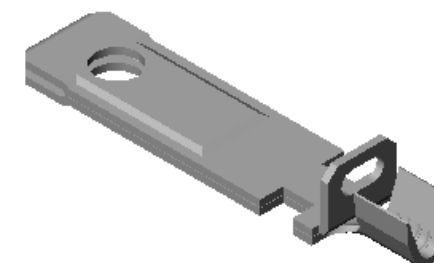
1. MATERIAL: .020 THICK C26000 BRASS; 1/2 HARD
ANNEALED TO TEMPER; PER ETCO METAL CODE 04560.
2. MATERIAL: .020 THICK C26000 PRETINNED BRASS; 1/2 HARD
ANNEALED TO TEMPER; PER ETCO METAL CODE 00143.
3. WIRE RANGE: #14-#18 AWG.
4. FOR WINDING AND REWINDING INSTRUCTIONS SEE PR-3-07.

P/C	DESCRIPTION ④	MAT'L	REWIND	RA	SP
09890	SQ817F-A-HB	NOTE 1	NO	X	X
14247	SQ817F-ARB-HB	NOTE 1	YES	X	X
14273	SQ817F-ARC-HB	NOTE 1	YES	X	X
09889	SQ817F-D-HB	NOTE 1	NO	X	X
14394	SQ817F-A-THB	NOTE 2	NO	X	X

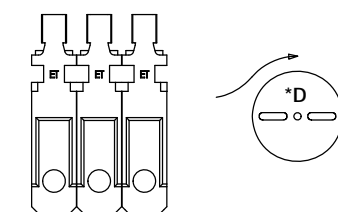
Rev.	Description of Change/ SCN#	Date
-	TRANSFER FROM CP TO EP	1-9-04
1	SCN# 102735 SCJ	10-29-04
2	SCN# 102826 SCJ	1-19-05
3	SCN# 102918 SCJ	4-8-05
4	ECR# 816 SCJ	10-26-11



SECTION A-A
SCALE 6 : 1



DIRECTION EXITING TOOL
EARS DOWN, TO THE BACK
SEE NOTE 4



DIRECTION EXITING TOOL
EARS DOWN, TO THE BACK
SEE NOTE 4

UNCONTROLLED COPY

 THIRD ANGLE PROJECTION	TOOL NO.	Title: NON-POLARIZED NOTCHED BLADE		
	0911	DO NOT SCALE DWG.	Drawn By: S.JOHNSON	Date: 1-9-04
TOLERANCES UNLESS OTHERWISE SPECIFIED INCHES: XX - ±.030 XXX - ±.015 ANGLES: ±5°	 ETCO	ETCO Incorporated Engineered Products 25 Bellows Street Warwick, RI 02888 Phone: (401) 467-2400 Fax: (401) 467-9230 www.ETCO.com	Chk'd/App'd By:	Scale: 6X Size: C
		Dwg. No.: SQ817F cust		