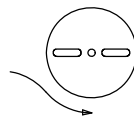
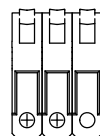
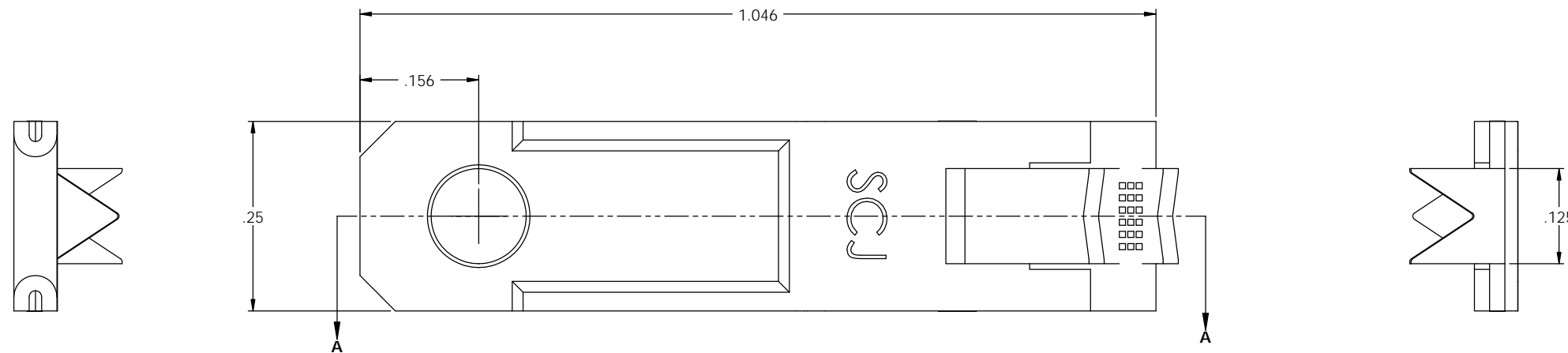
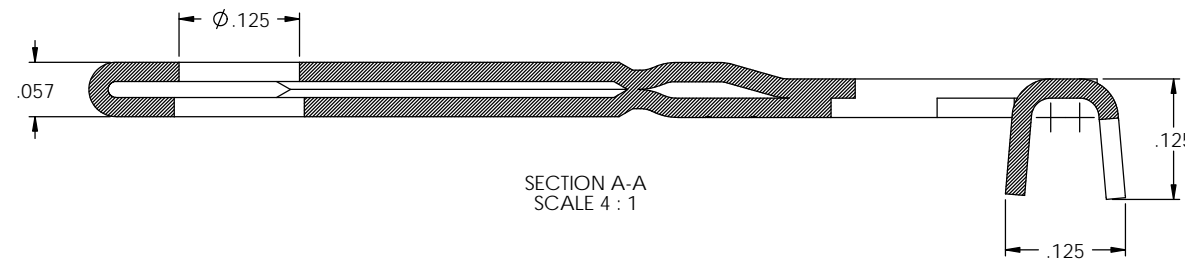
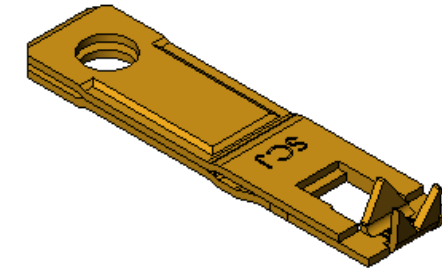


NOTES:

1. MATERIAL: .020 THICK C26000 BRASS; 1/2 HARD
ANNEALED TO TEMPER; PER ETCO METAL CODE 04560.
2. PARTS MAY BE COATED WITH A LIGHT FILM OF LUBRICATION
USED IN THE MANUFACTURING PROCESS.
3. WIRE RANGE: #22 SOLID AWG.
4. FOR REWIND INSTRUCTIONS SEE PR-3-07.

P/C	DESCRIPTION ②	MAT'L	REWIND
14319	SQRA-3-A-HB	NOTE 1	NO
14324	SQRA-3-ARB-HB	NOTE 1	YES

Rev.	Description of Change/ SCN#	Date
1	TRANSFERED FROM CP SCJ	9-3-08
2	ECR# 816 SCJ	11-1-11



DIRECTION EXITING TOOL
EARS DOWN, TO THE BACK
SEE NOTE 4

UNCONTROLLED COPY

 THIRD ANGLE PROJECTION	TOOL NO.	Title: 90° PADDED BLADE		
	0862	DO NOT SCALE DWG.	Drawn By: S. JOHNSON	Date: 9-3-08
TOLERANCES UNLESS OTHERWISE SPECIFIED INCHES: XX - ±.030 XXX - ±.015 ANGLES: ±5°	 ETCO Incorporated Engineered Products 25 Bellows Street Warwick, RI 02888 Phone: (401) 467-2400 Fax: (401) 467-9230 www.ETCO.com	Chk'd/App'd By:	Scale: 8X	Size: C
		Dwg. No.: SQRA-3 cust		