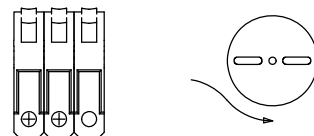
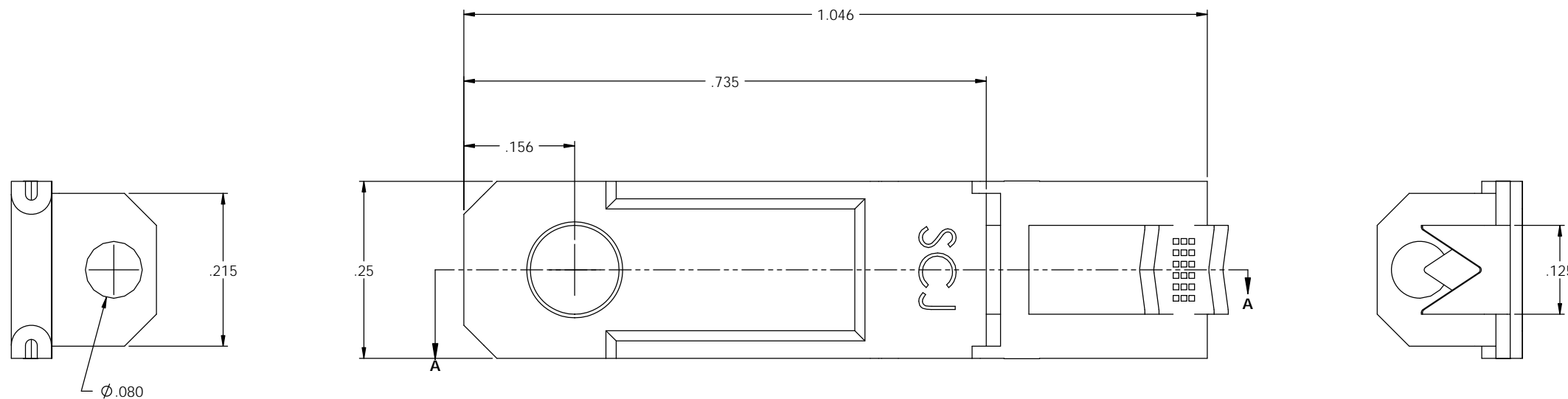
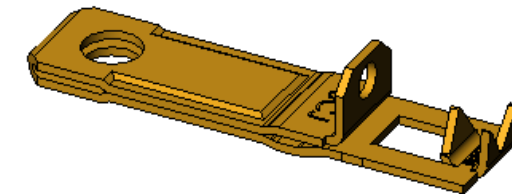
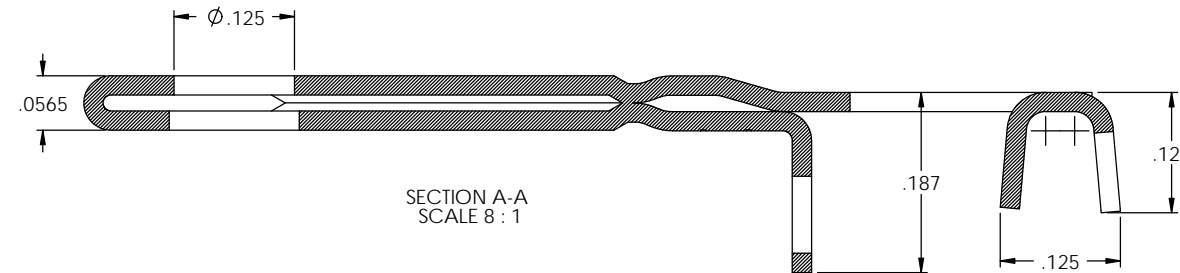


NOTES:

1. MATERIAL: .020 THICK C26000 BRASS; 1/2 HARD  
ANNEALED TO TEMPER; PER ETCO METAL CODE 04560.
2. PARTS MAY BE COATED WITH A LIGHT FILM OF LUBRICATION  
USED IN THE MANUFACTURING PROCESS.
3. WIRE RANGE: #22 SOLID AWG.
4. FOR REWIND INSTRUCTIONS SEE PR-3-07.

P/C	DESCRIPTION (2)	MAT'L	REWIND
14363	SQRA-4-A-HB	NOTE 1	NO
14364	SQRA-4-ARB-HB	NOTE 1	YES

Rev.	Description of Change/ SCN#	Date
1	TRANSFERED FROM CP SCJ	9-3-08
2	ECR# 816 SCJ	11-1-11



DIRECTION EXITING TOOL  
EARS DOWN, TO THE BACK  
SEE NOTE 4

**UNCONTROLLED COPY**

 THIRD ANGLE PROJECTION	TOOL NO.	Title: 90° PADDED BLADE		
	0862	DO NOT SCALE DWG.	Drawn By: S.JOHNSON	Date: 9-3-08
TOLERANCES UNLESS OTHERWISE SPECIFIED INCHES: XX - ± 0.30 XXX - ± 0.15 ANGLES: ± 5°	 ETCO	ETCO Incorporated Engineered Products 25 Bellows Street Warwick, RI 02888 Phone: (401) 467-2400 Fax: (401) 467-9230 www.ETCO.com	Chk'd/App'd By:	Scale: 8X Size: C
		Dwg. No.: SQRA-4 cust		