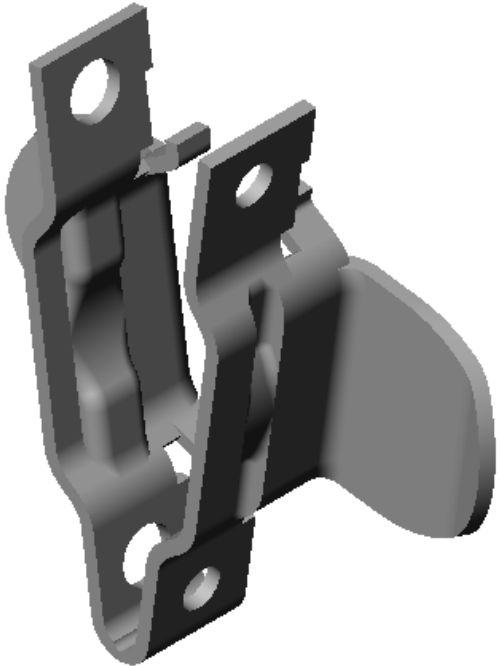
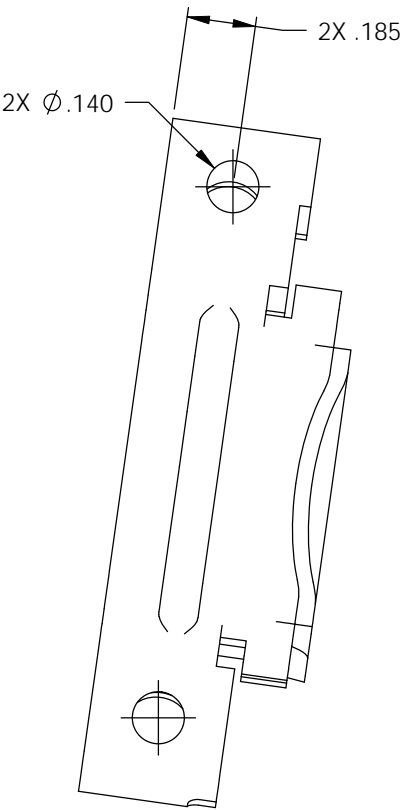
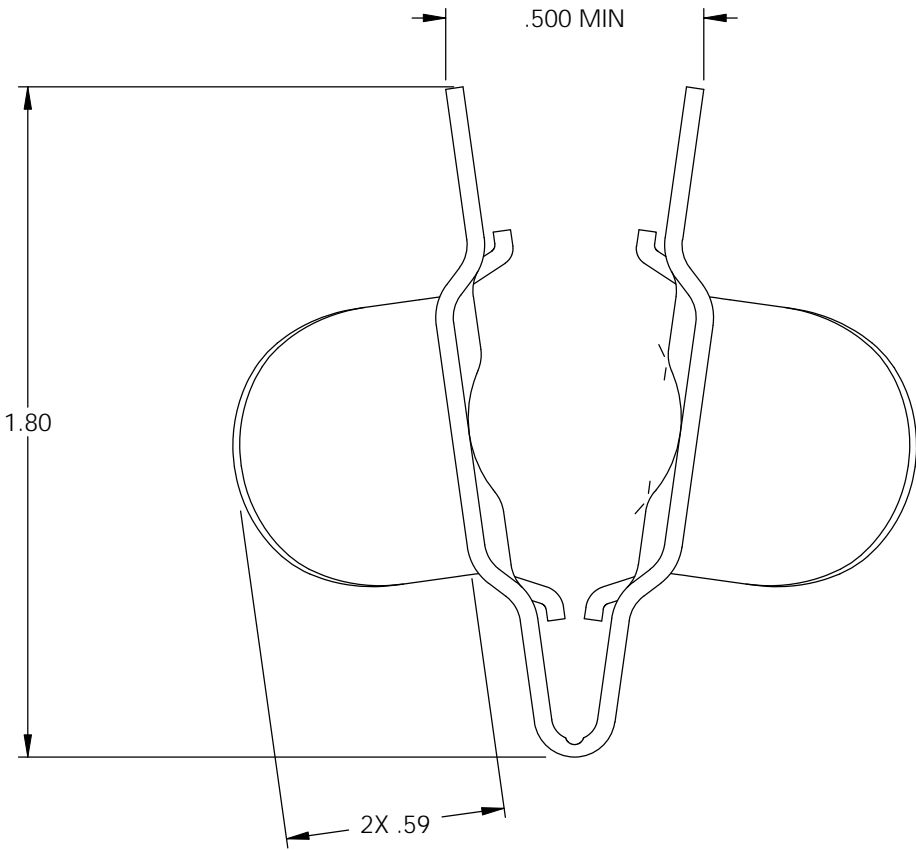
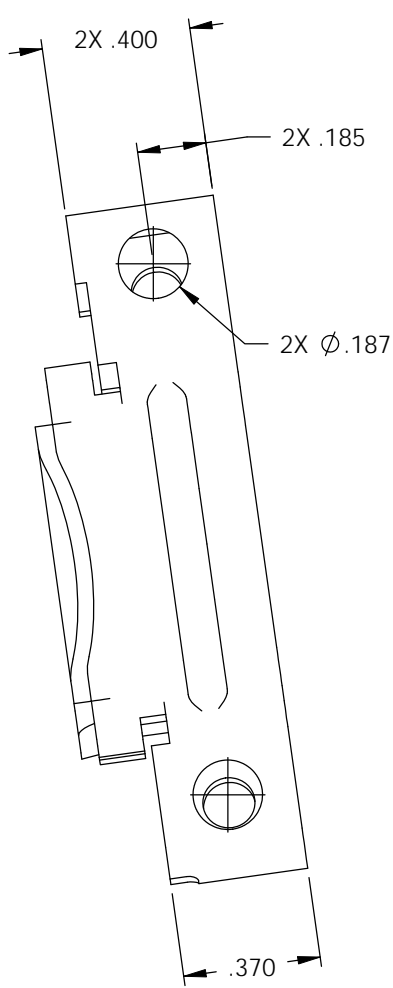


P/C	DESCRIPTION	MAT'L
15516 (1)	SR20-SM-GS	NOTE 1

Rev.	Description of Change/ SCN#	Date
	CUSTOMER DRAWING REL.	
1	SCN-140449, P/C 15516 was 82101, M/C 00115 was 07064 SMK	1-6-09



- NOTES:
1. MATERIAL: .047 THICK #1008 C.R. STEEL; #4 TEMPER
PRE HOT DIP GALVANIZED
PER ETCO METAL CODE 00115. (1)
 2. PARTS MAY BE COATED WITH A LIGHT FILM OF LUBRICATION
USED IN THE MANUFACTURING PROCESS.
 3. PART MUST BREAK APART AFTER A 180° BEND IN ONE DIRECTION,
FOLLOWED BY A BEND TO THE PART'S ORIGINAL POSITION.

UNCONTROLLED COPY

<p>THIRD ANGLE PROJECTION TOLERANCES UNLESS OTHERWISE SPECIFIED INCHES: .XX - ±.030 .XXX - ±.015 ANGLES: ±5°</p>	<p>TOOL NO. 0831</p>	<p>Title: SMALL STRAIN RELIEF</p>			
	<p>ETCO</p>	<p>ETCO Incorporated Engineered Products 25 Bellows Street Warwick, RI 02888 Phone: (401) 467-2400 Fax: (401) 467-9230 www.ETCO.com</p>	<p>DO NOT SCALE DWG.</p>	<p>Drawn By: C. O'REILLY</p>	<p>Date: 06/12/03</p>
		<p>Dwg. No.: SR20 cust</p>	<p>Scale: 4X</p>	<p>Size B</p>	