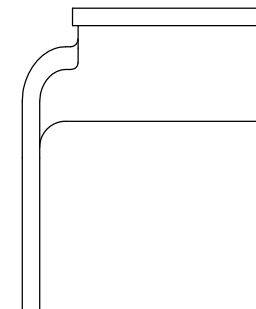
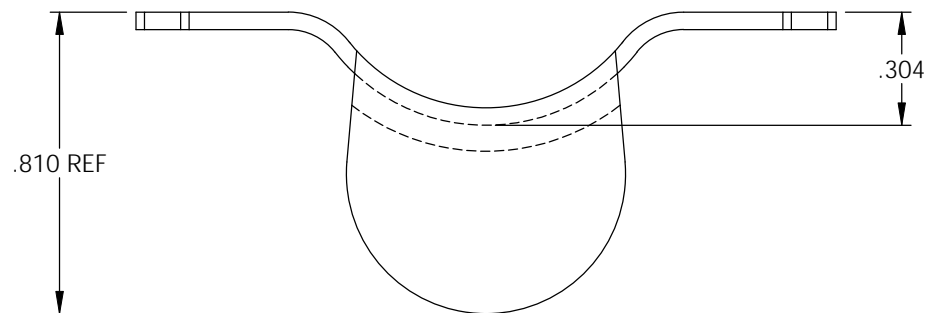
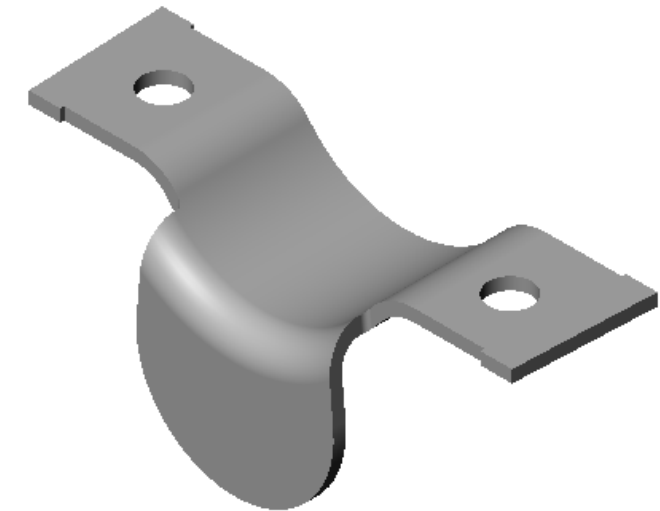
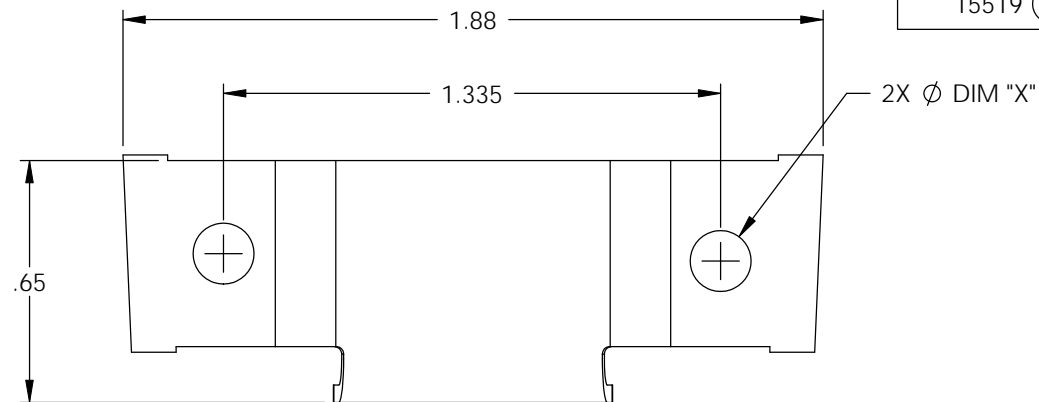


Rev.	Description of Change/ SCN#	Date
1	TRANSFER FROM CP TO EP	9-13-04
2	SCN-140449, 15520 WAS 82102, 15519 WAS 82103 SMK	1-12-09

PART CODE	DESCRIPTION	MATERIAL	DIMENSION "X"
15520 (2)	SR21-187-GS	NOTE 1	Ø.187
15519 (2)	SR21-140-GS	NOTE 1	Ø.140



NOTES:

1. MATERIAL: .047 THICK #1008 C.R. STEEL; #4 TEMPER
PRE HOT DIP GALVANIZED
PER ETCO METAL CODE 07063.
2. PARTS MAY BE COATED WITH A LIGHT FILM OF LUBRICATION
USED IN THE MANUFACTURING PROCESS.

THIS PRINT IS THE PROPERTY OF ETCO INCORPORATED. NO PART OF THIS DESIGN MAY BE USED IN ANY WAY WITHOUT WRITTEN CONSENT FROM ETCO INCORPORATED.

UNCONTROLLED COPY

<p>THIRD ANGLE PROJECTION TOLERANCES UNLESS OTHERWISE SPECIFIED INCHES: .XX - ±.030 .XXX - ±.015 ANGLES: ±5°</p>	<p>TOOL NO.</p> <p>0839</p>	<p>Title: 1/2" STRAIN RELIEF</p>		
	<p>ETCO</p>	<p>DO NOT SCALE DWG.</p>	<p>Drawn By: S. JOHNSON</p>	<p>Date: 9-13-04</p>
<p>ETCO Incorporated Engineered Products 25 Bellows Street Warwick, RI 02888 Phone: (401) 467-2400 Fax: (401) 467-9230 www.ETCO.com</p>		<p>Chk'd/App'd By:</p>	<p>Scale: 2X</p>	<p>Size B</p>
		<p>Dwg. No.: SR21-GS</p>		