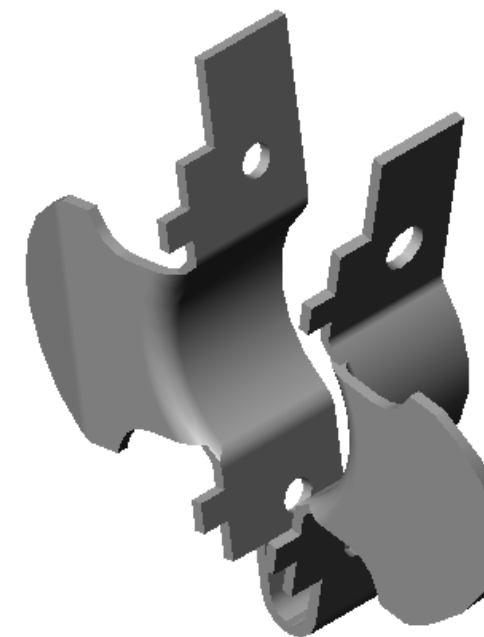
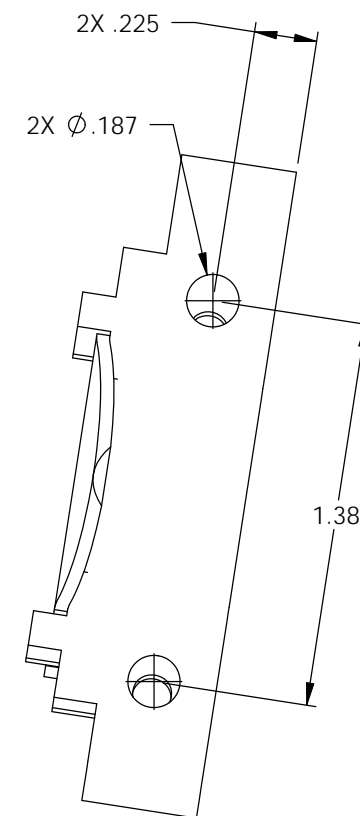
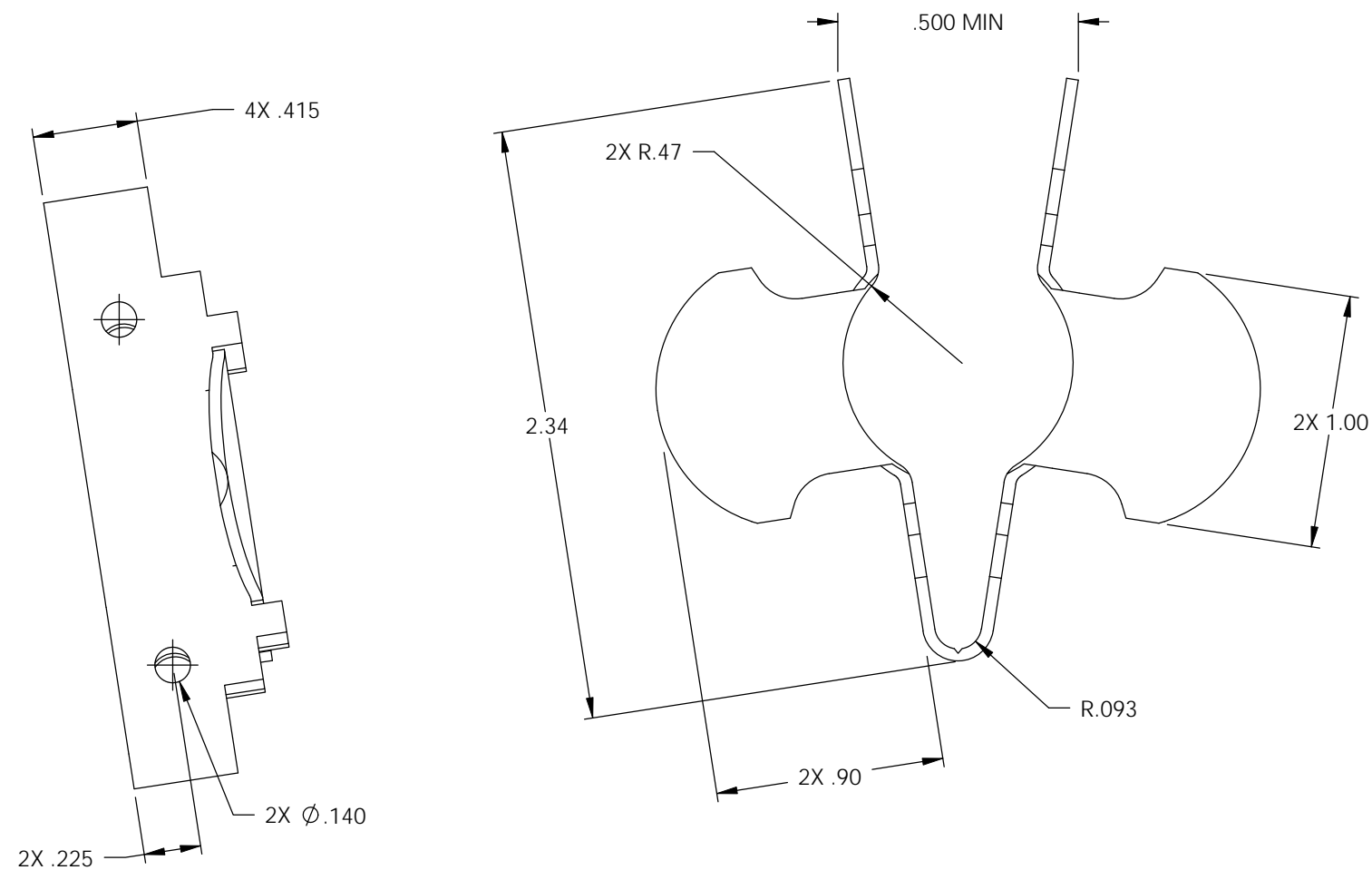


P/C	DESCRIPTION	MAT'L
15408 (1)	SR22-LG-GS	NOTE 1

Rev.	Description of Change/ SCN#	Date
	CUST. DRAWING RELEASE	
1	SCN-140429, P/C 15408 WAS 82104, M/C 00112 WAS 07060 SMK	10-27-09



- NOTE:
- MAT'L: .047 THK., #1008 C.R. STEEL, #4 TEMPER (SKIN ROLLED), PRE HOT DIP GALVANIZED, PER ETCO METAL CODE NO. 00112. (1)
  - PARTS MAY BE COATED WITH A LIGHT FILM OF LUBRICATION USED IN THE MANUFACTURING PROCESS.
  - PART MUST BREAK APART DURING 180° BEND IN ONE DIRECTION, FOLLOVED BY A BEND TO THE PARTS ORIGINAL POSITION.

## UNCONTROLLED COPY

 THIRD ANGLE PROJECTION TOLERANCES UNLESS OTHERWISE SPECIFIED INCHES: .XX - ±.030 .XXX - ±.015 ANGLES: ±5°	TOOL NO. <b>0840</b>	Title: <b>LARGE STRAIN RELIEF</b>		
	 ETCO	DO NOT SCALE DWG.	Drawn By: <b>C. OREILLY</b>	Date: <b>7/24/03</b>
ETCO Incorporated Engineered Products 25 Bellows Street Warwick, RI 02888 Phone: (401) 467-2400 Fax: (401) 467-9230 www.ETCO.com		Chk'd/App'd By:	Scale: <b>4X</b>	Size <b>B</b>
		Dwg. No.: <b>SR22-LG</b>		