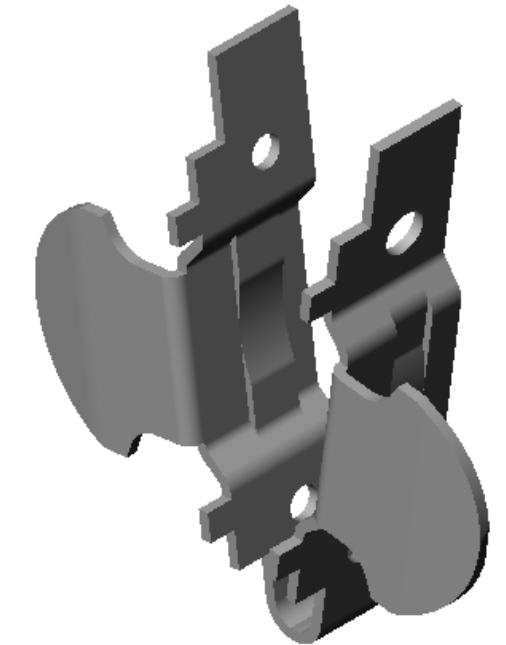
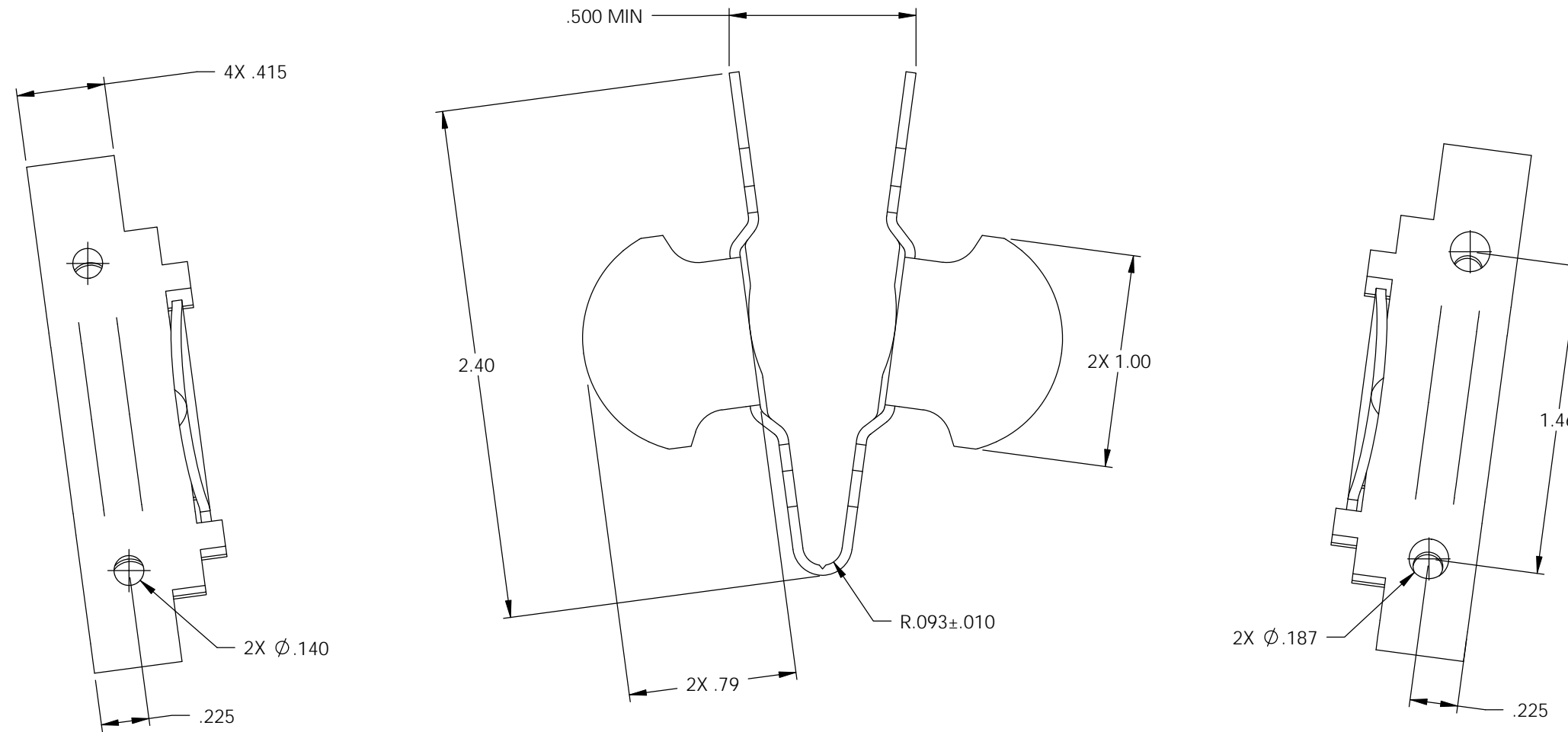




- NOTE:
 1.) MAT'L: .047 THK., #1008 C.R. STEEL, #4 TEMPER (SKIN ROLLED),
 PRE HOT DIP GALVANIZED, PER ETCO METAL CODE NO. 00112. (2)
 2.) PARTS MAY BE COATED WITH A LIGHT FILM OF LUBRICATION
 USED IN THE MANUFACTURING PROCESS.
 3.) PARTS MUST BREAK APART DURING A 180° BEND IN ONE DIRECTION,
 FOLLOWED BY A BEND TO THE PARTS ORIGINAL POSITION.

P/C	DESCRIPTION	MAT'L
15407 (2)	SR23-LG-GS	NOTE 1

Rev.	Description of Change/ SCN#	Date
-	INITIAL CUST. DRAWING REL. JMR	6/30/08
1	ADDED P/C CHART SCJ	9-19-08
2	SCN-140429, P/C 15407 WAS 82105, M/C 00112 WAS 07060 SMK	10-27-09



UNCONTROLLED COPY

 THIRD ANGLE PROJECTION TOLERANCES UNLESS OTHERWISE SPECIFIED INCHES: .XX - ±.030 .XXX - ±.015 ANGLES: ±5°	TOOL NO. 0840	Title: LARGE STRAIN RELIEF		
	 ETCO	DO NOT SCALE DWG.	Drawn By: J. RAMALHO	Date: 6/30/08
ETCO Incorporated Engineered Products 25 Bellows Street Warwick, RI 02888 Phone: (401) 467-2400 Fax: (401) 467-9230 www.ETCO.com		Chk'd/App'd By:	Scale: 1.5X	Size B
		Dwg. No.: SR23-LG		