

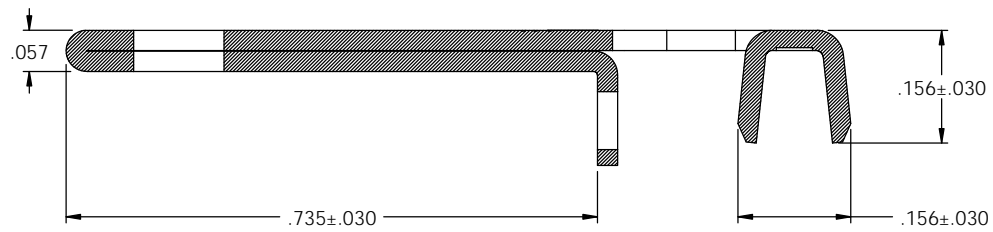
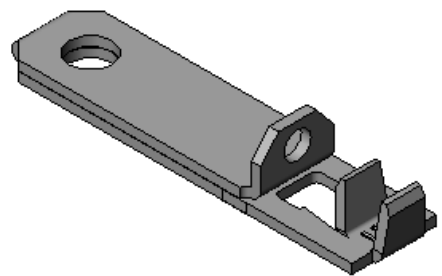
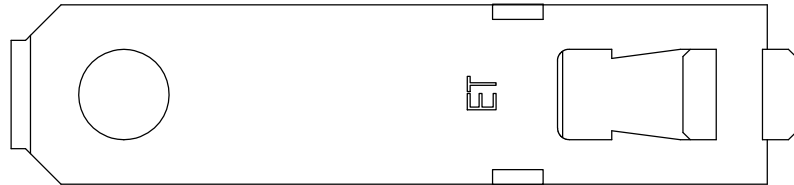
NOTES:

1. MATERIAL: .028 THICK C26000 BRASS; 1/2 HARD
ANNEALED TO TEMPER; PER ETCO METAL CODE 00745.
2. MATERIAL: .028 THICK C26000 PRE-TINNED BRASS; 1/2 HARD
ANNEALED TO TEMPER; PER ETCO METAL CODE 00203.
3. FOR WINDING AND REWINDING INSTRUCTIONS SEE WI-09-10-8.
4. WIRE RANGE: #14-#18 AWG.

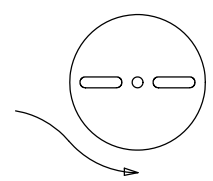
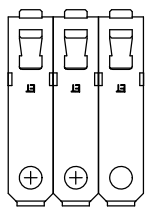
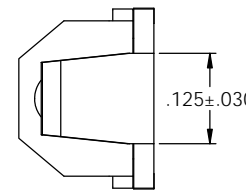
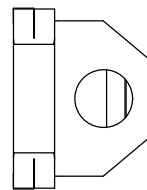
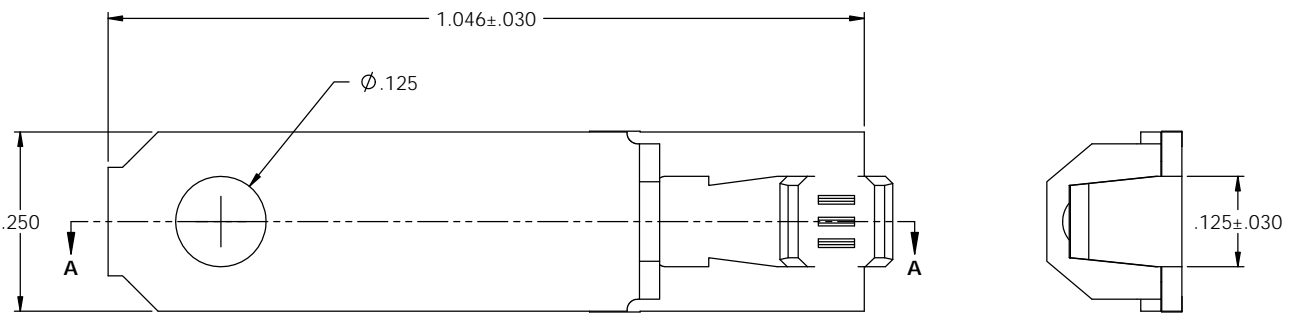
③

P/C	DRESCRIPTION ④	MAT'L	REWIND	RA	ETCO
14053	SRA1-A-HB	NOTE 1	NO	X	X(11)
14054	SRA1-ARB-HB	NOTE 1	YES	X	X(11)
14395	SRA1-A-THB	NOTE 2	NO	X	X(11)

Rev.	Description of Change/ SCN#	Date
1	TRANSFER FROM CP TO EP	11-1-04
2	SCN# 102918 SCJ	4-8-05
3	SCN# 140389 JMR	6-6-08
4	ECR# 816 SCJ	10-27-11



SECTION A-A
SCALE 6 : 1



DIRECTION EXITING TOOL
EARS DOWN, TO THE BACK
SEE NOTE 2

UNCONTROLLED COPY

<p>THIRD ANGLE PROJECTION</p>	TOOL NO.	Title: RIGHT ANGLE BLADE	
	0894	DO NOT SCALE DWG.	Date: 11-1-04
<p>TOLERANCES UNLESS OTHERWISE SPECIFIED</p> <p>INCHES: .XX - ±.030 .XXX - ±.015</p> <p>ANGLES - ±5°</p>	<p>ETCO</p>	Drawn By: S.JOHNSON	Scale: 6X
		Chk'd/App'd By:	Size: C
		Dwg. No.: SRA1	