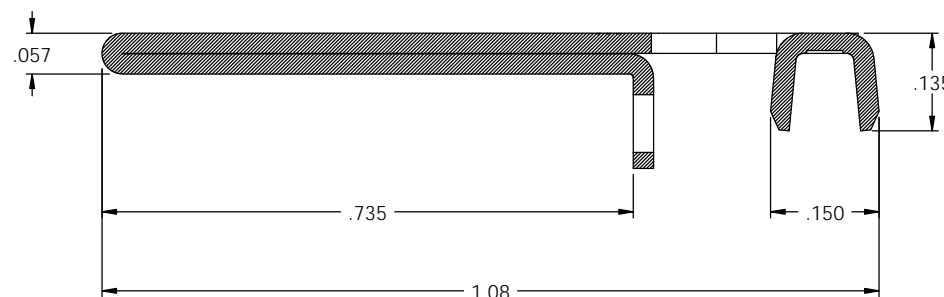
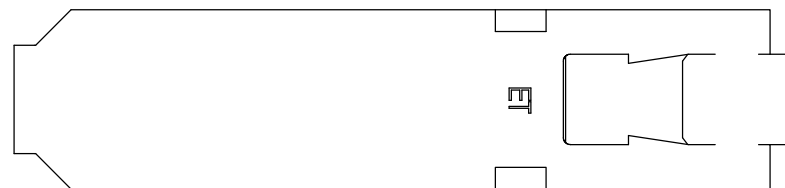


NOTES:

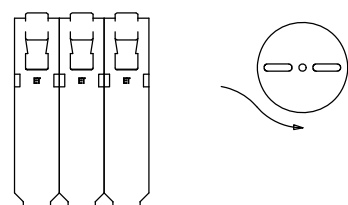
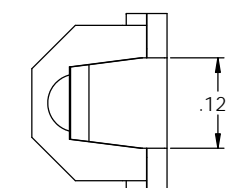
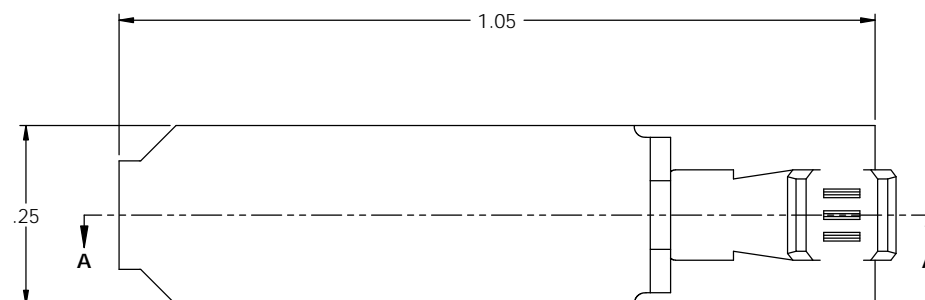
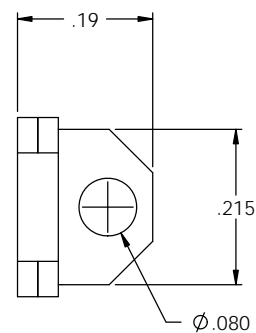
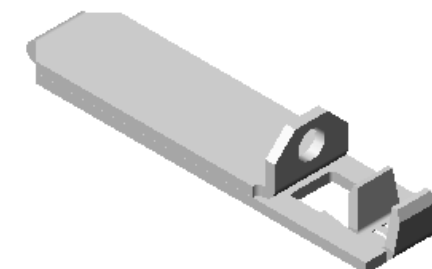
1. MATERIAL: .0275 THICK C26000 PRETINNED BRASS; 1/2 HARD ANNEALED TO TEMPER; PER ETCO METAL CODE 00209.
2. FOR WINDING AND REWINDING INSTRUCTIONS SEE PR-3-07.
3. WIRE RANGE: 20 - 18 AWG

P/C	DESCRIPTION (2)	MATERIAL	REWIND
14403	SRA10-A-THB	NOTE 1	NO
14405	SRA10-ARB-THB	NOTE 1	YES

Rev.	Description of Change/ SCN#	Date
1	TRANSFER FROM CP SCJ	9-3-08
2	ECR# 816 SCJ	10-27-11



SECTION A-A  
SCALE 6 : 1



DIRECTION EXITING TOOL  
EARS DOWN, TO THE BACK  
SEE NOTE 2

**UNCONTROLLED COPY**

 THIRD ANGLE PROJECTION	TOOL NO.	Title: RIGHT ANGLE BLADE		
	0890	DO NOT SCALE DWG.	Drawn By: S.JOHNSON	Date: 9-3-08
TOLERANCES UNLESS OTHERWISE SPECIFIED INCHES: XX - ±.030 XXX - ±.015 ANGLES: ±5°	 ETCO	ETCO Incorporated Engineered Products 25 Bellows Street Warwick, RI 02888 Phone: (401) 467-2400 Fax: (401) 467-9230 www.ETCO.com	Chk'd/App'd By:	Scale: 6X Size: C
Dwg. No.: SRA10				