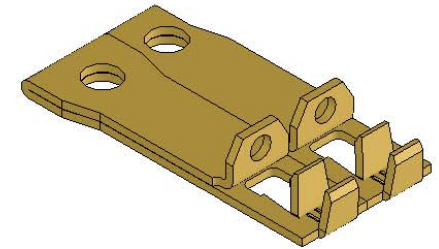
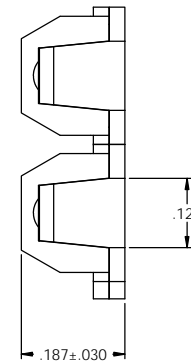
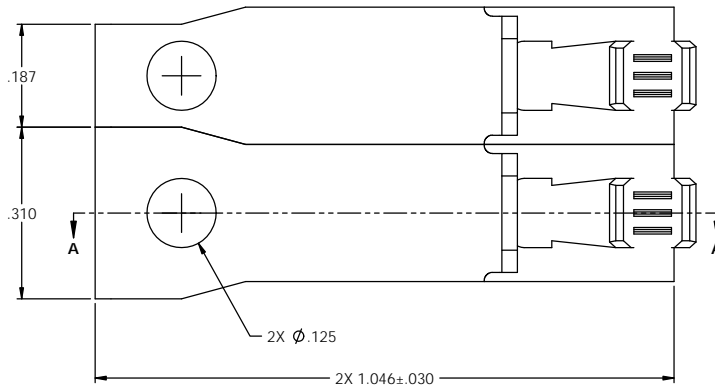
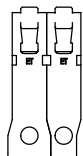


SECTION A-A  
SCALE 6 : 1

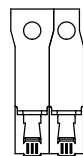
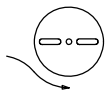


|       |             |        |        |   |   |
|-------|-------------|--------|--------|---|---|
| P/C   | DESCRIPTION | MAT'L  | REWIND |   |   |
| 09947 | SRA3*A-HB   | NOTE 1 | NO     | X | X |

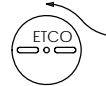
| Rev. | Description of Change/ SCN# | Date     |
|------|-----------------------------|----------|
| 1    | TRANSFER FROM CP TO EP      | 10-29-04 |
| 2    | SCN# 102918 SCJ             | 4-8-05   |
| 3    | SCN# 140384 JMR             | 6-10-08  |



DIRECTION EXITING TOOL  
EARS DOWN, TO THE REAR



DIRECTION TOWARDS APPLICATOR  
EARS UP, TO THE FRONT



THIS PRINT IS THE PROPERTY OF ETCO INCORPORATED. NO PART OF THIS DESIGN MAY BE USED IN ANY WAY WITHOUT WRITTEN CONSENT FROM ETCO INCORPORATED.

- NOTES:  
 1. MATERIAL: .028 THICK C26000 BRASS- 1/2 HARD  
 ANNEALED TO TEMPER- PER ETCO METAL CODE 00745.  
 2. WIRE RANGE: 18 - 14 AWG

| UNCONTROLLED COPY  |                         |                                 |                       |                  |                |
|--|-------------------------|---------------------------------|-----------------------|------------------|----------------|
| <br>THIRD ANGLE PROJECTION<br>TOLERANCES UNLESS OTHERWISE SPECIFIED<br>INCHES: .XX - ±.030<br>.XXX - ±.015<br>ANGLES - ±5°                           | TOOL NO.<br><b>0891</b> | Title: <b>RIGHT ANGLE BLADE</b> |                       |                  |                |
|  | DO NOT SCALE DWG.       | Drawn By: <b>S_JOHNSON</b>      | Date: <b>10-29-04</b> | Scale: <b>6X</b> | Size: <b>C</b> |
| <br>ETCO Incorporated<br>Engineered Products<br>25 Bellows Street<br>Warwick, RI 02888<br>Phone: (401)467-2400<br>FAX: (401)467-9230<br>www.ETCO.com | Chk'd/App'd By:         |                                 | Dwg. No.: <b>SRA3</b> |                  |                |