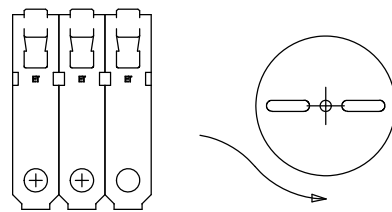
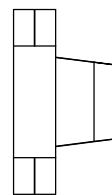
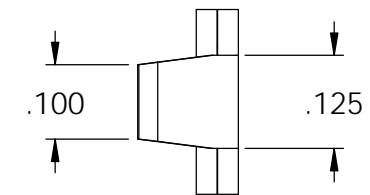
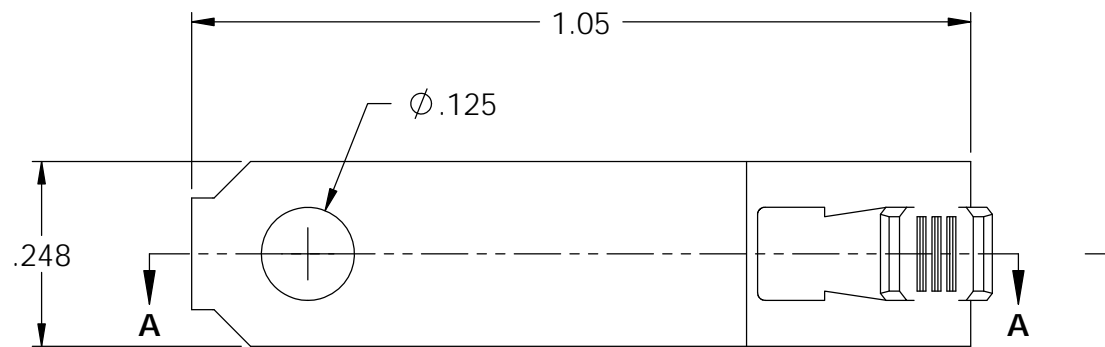
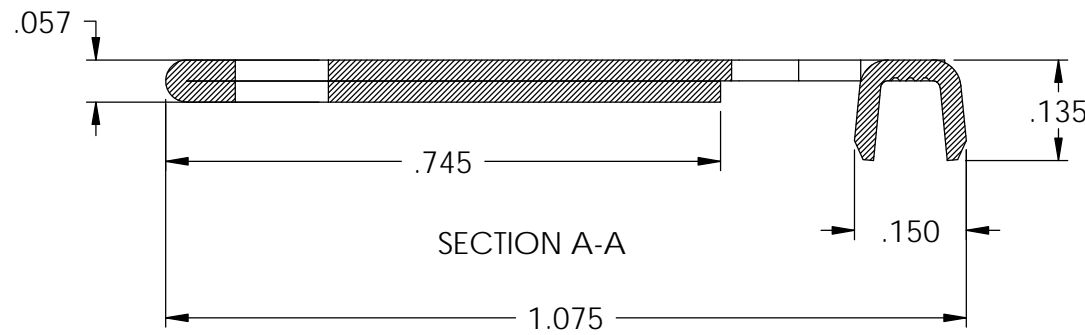
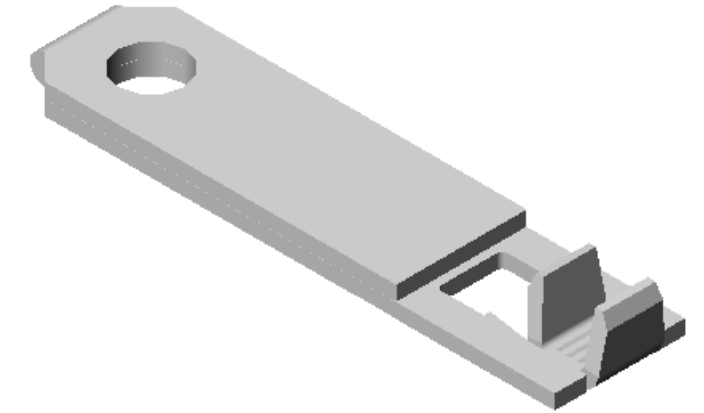
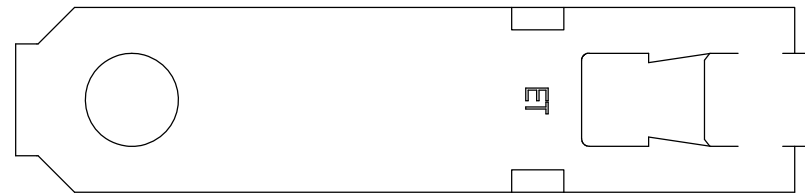


NOTES:

1. MATERIAL: .0275 THICK C26000 BRASS; 1/2 HARD ANNEALED TO TEMPER; PER ETCO METAL CODE 00206.
2. MATERIAL: .0275 THICK C26000 PRETINNED BRASS; 1/2 HARD ANNEALED TO TEMPER; PER ETCO METAL CODE 00207.
3. FOR WINDING AND REWINDING INSTRUCTIONS SEE PR-3-07.
- ② 4. WIRE RANGE: 20 - 18 AWG

Part Code	Description ③	Material	Rewind
09942	SPA4R-ARB-HB	NOTE 1	YES
09943	SRA4L-A-HB	NOTE 1	NO
14127	SRA4L-A-THB	NOTE 2	NO
14128	SRA4R-ARB-THB	NOTE 2	YES

Rev.	Description of Change/ SCN#	Date
1	INITIAL RELEASE JPD	8-10-07
2	SCN-140386 JMR	6-10-08
3	ECR# 816 SCJ	10-27-11



DIRECTION EXITING TOOL EARS DOWN, TO THE BACK SEE NOTE 3

UNCONTROLLED COPY

<p>THIRD ANGLE PROJECTION TOLERANCES UNLESS OTHERWISE SPECIFIED INCHES: .XX - ±.030 .XXX - ±.015 ANGLES: ±5°</p>	<p>TOOL NO. 0890</p>	<p>Title: RIGHT ANGLE BLADE</p>			
		<p>ETCO Incorporated Engineered Products 25 Bellows Street Warwick, RI 02888 Phone: (401) 467-2400 Fax: (401) 467-9230 www.ETCO.com</p>	<p>DO NOT SCALE DWG.</p>	<p>Drawn By: J. DeSio</p>	<p>Date: 8/10/07</p>
		<p>Chk'd/App'd By:</p>	<p>Scale: 4X</p>	<p>Size: B</p>	<p>Dwg. No.: SRA4 cust</p>