

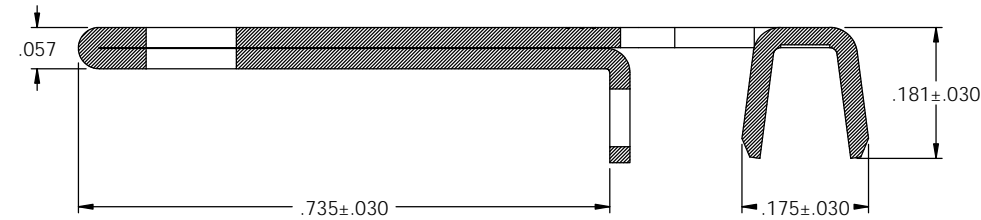
NOTES:

1. MATERIAL: .028 THICK C26000 BRASS; 1/2 HARD
ANNEALED TO TEMPER; PER ETCO METAL CODE 00097.
2. FOR WINDING AND REWINDING INSTRUCTIONS SEE PR-3-07.
3. WIRE RANGE: #12-#14 AWG.

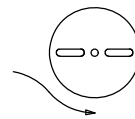
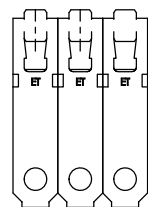
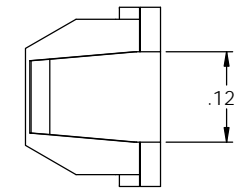
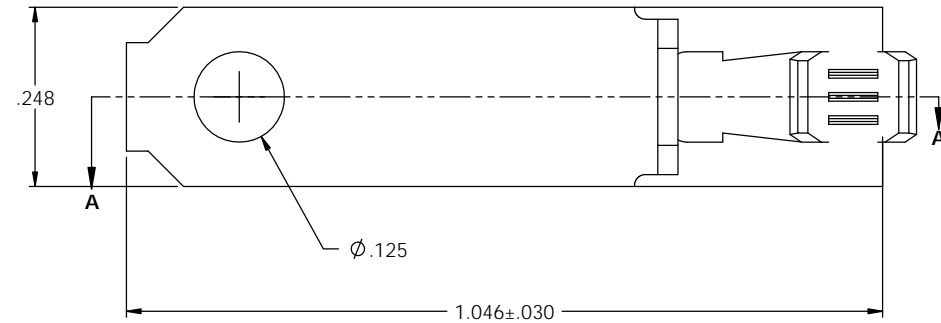
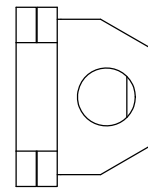
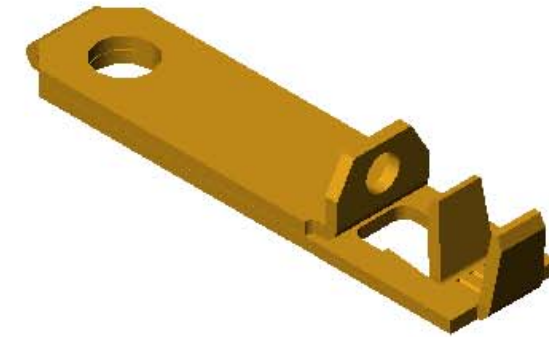
14

P/C	DESCRIPTION (15)	MAT'L	REWIND	RA	SP
14131	SRA5-A-HB	NOTE 1	NO	X	X
14132	SRA5-ARB-HB	NOTE 1	YES	X	X

Rev.	Description of Change/SCN#	Date
8	TRANSFER FROM CP TO EP	9/12/03
9	SCN# 102354 SCJ	11-20-03
10	SCN# 102566 & SCN# 102555 SCJ	4-23-04
11	SCN# 102735 SCJ	10-29-04
12	SCN# 102918 SCJ	4-8-05
13	SCN# 103122 SCJ	2-6-06
14	SCN# 140389 JMR	6-6-08
15	ECR# 816 SCJ	10-27-11



SECTION A-A
SCALE 6 : 1



DIRECTION EXITING TOOL
EARS DOWN, TO THE REAR
SEE NOTE 2

THIS PRINT IS THE PROPERTY OF ETCO INCORPORATED. NO PART OF THIS DESIGN MAY BE USED IN ANY WAY WITHOUT WRITTEN CONSENT FROM ETCO INCORPORATED.

UNCONTROLLED COPY			
 THIRD ANGLE PROJECTION TOLERANCES UNLESS OTHERWISE SPECIFIED INCHES: XX - ±.030 XXX - ±.015 ANGLES - ±5°	TOOL NO. 0894	Title: RIGHT ANGLE BLADE	
		DO NOT SCALE DWG. ETCO Incorporated Engineered Products 25 Bellows Street Warwick, R.I. 02888 Phone: (401)467-2400 FAX: (401)467-9230 www.ETCO.com	Drawn By: S. JOHNSON Date: 10-29-04
		Chk'd/App'd By:	Scale: 6X Size: C
		Dwg. No.: SRA5	